

11

FLOOR PLANS OF RESIDENTIAL PROPERTIES IN THE PHASE 期數的住宅物業的樓面平面圖

LEGEND FOR FLOOR PLAN 平面圖圖例

A/C PLATFORM = AIR CONDITIONER PLATFORM = 冷氣機平台
A/C PLATFORM ABOVE = AIR CONDITIONER PLATFORM ABOVE = 上層冷氣機平台位置
A/C PLATFORM FOR T_ UNIT_ = AIR CONDITIONER PLATFORM FOR T_ UNIT_ =
為_座_單位而設的冷氣機平台
A/C PLINTH FOR T_ UNIT_ = AIR-CONDITIONER PLINTH FOR T_ UNIT_ =
為_座_單位而設的冷氣機台
ACC. LIFT = ACCESSIBLE LIFT = 暢通易達升降機
ARCH. FEATURE = ARCHITECTURAL FEATURE = 建築裝飾
ARCH. FEATURE ABOVE = ARCHITECTURAL FEATURE ABOVE = 上層建築裝飾位置
AT _/F ONLY = 只設於_樓
AT H/L = AT HIGH LEVEL = 在高位
BAL = BALCONY = 露台
BAL. BELOW = BALCONY BELOW = 露台置下
BALCONY ABOVE = 上層露台位置
BATH = BATHROOM = 浴室
BED RM. = BEDROOM = 睡房
BUILDING LINE ABOVE = 上層建築線
CABLE RISER ROOM = 電纜管道房
COMMON FLAT ROOF = 公用平台
COMMON LAWN = 公用草坪
COMMON LAWN (W/. GRASS TURF SUITABLE FOR FOOT TRAFFIC) = COMMON LAWN
(WITH GRASS TURF SUITABLE FOR FOOT TRAFFIC) = 公用草坪 (適合人流的草地)
COMMON ROOF = 公用天台
COVER OF BAL. = COVER OF BALCONY = 露台上蓋
COVER OF U.P. = COVER OF UTILITY PLATFORM = 工作平台上蓋
DIN = DINING ROOM = 飯廳
EAD = EXHAUT AIR DUCT= 排氣管
ELECT. METER RM. = ELECTRIC METER ROOM = 電錶房
ELECT. RM = ELECTRICAL ROOM = 電制房
ELV DUCT = EXTRA-LOW VOLTAGE DUCT = 特低壓電槽
F.A.D. = FRESH AIR DUCT = 鮮風管道
FAN RM = FAN ROOM = 風機房
F.H. = FIRE HYDRANT 消防栓
FIREMAN LIFT LOBBY = 消防員升降機大堂
FLAT ROOF = 平台
FLAT ROOF BELOW = 平台置下
F.S. TANK ROOM = FIRE SERVICE TANK ROOM = 消防水缸房
F.S. WATER TANK = FIRE SERVICE WATER TANK = 消防水缸
H.R. = HOSE REEL = 消防喉轆
INACCESSIBLE COMMON FLAT ROOF = 無法進入的公用平台
INACCESSIBLE COMMON LAWN = 無法進入的公用草坪

KIT = KITCHEN = 廚房
LAV = LAVATORY = 洗手間
LIFT = 升降機
LIFT LOBBY = 升降機大堂
LIFT MACHINE RM. = LIFT MACHINE ROOM = 升降機機房
LIFT OVERRUN = 升降機槽
LIV = LIVING ROOM = 客廳
LOWER DUPLEX = 複式單位下層
M. BED RM. = MASTER BEDROOM = 主人睡房
M. BATH = MASTER BATHROOM = 主人浴室
METAL HORIZONTAL NOISE BARRIER = 金屬水平防噪音屏障
OPEN KIT. = OPEN KITCHEN = 開放式廚房
P.D. = PIPE DUCT = 管道槽
POTABLE WATER PUMP RM. = POTABLE WATER PUMP ROOM = 食水泵房
POTABLE WATER TANK = 食用水水缸
POWDER RM. = POWDER ROOM = 化妝間
ROOF = 天台
RS. & M.R. = REFUSE STORAGE AND MATERIAL RECOVERY ROOM = 垃圾及物料回收室
SPRINKLER VALVE DUCT = 消防灑水閥管道槽
STEEL PLATFORM FOR E&M SERVICES UNDERNEATH = STEEL PLATFORM FOR ELECTRICAL
AND MECHANICAL SERVICES UNDERNEATH = 為下方機電喉管而設的鋼架地台
STORE = STORE ROOM = 儲物室
T1A = TOWER 1 (1A) = 第1座 (1A)
T1B = TOWER 1 (1B) = 第1座 (1B)
T2A = TOWER 2 (2A) = 第2座 (2A)
T2B = TOWER 2 (2B) = 第2座 (2B)
U.P. ABOVE = UTILITY PLATFORM ABOVE = 上層工作平台位置
UP = 上
UPPER DUPLEX = 複式單位上層
UTILITY = UTILITY ROOM = 工作間
UTILITY PLATFORM = 工作平台
WALK-IN CLO. = WALK-IN CLOSET = 衣帽間
W.M.C. = WATER METER CABINET = 水錶櫃
* DESIGNATED COMMON AREA IN DEED OF MUTUAL COVENANT FOR MAINTENANCE
公契中用作保養的特定公用地方

NOISE MITIGATION MEASURES 噪音緩解措施

- Ⓝ1 ACOUSTIC BALCONY 減音露台
- Ⓝ2 FIXED GLAZING W/ MAINTENANCE WINDOW = FIXED GLAZING WITH MAINTENANCE WINDOW = 隔音玻璃連維修窗戶
- Ⓝ3 VERTICAL ARCHITECTURAL FIN 垂直建築裝飾

11

FLOOR PLANS OF RESIDENTIAL PROPERTIES IN THE PHASE

期數的住宅物業的樓面平面圖

Notes:

1. There are architectural features and/or exposed pipes on external walls of some floors.
2. Common pipes exposed and/or covered by cladding are located at/adjacent to balcony and/or flat roof and/or utility platform and/or air-conditioner platform and/or external wall of some residential units.
3. There are sunken slabs and/or ceiling bulkheads at living rooms, dining rooms, bedrooms, utility rooms, corridors, bathrooms, store rooms, lavatories, open kitchens and kitchens of some residential units for the air-conditioning system and/or mechanical and electrical (M&E) services. There are exposed pipes/ ductings for air-conditioning system and/or M&E services within some store rooms.
4. The internal ceiling height within some units may vary due to structural, architectural and/or decoration design variations.
5. Symbols of fittings and fitments shown on the floor plans, such as bathtubs, shower compartments, basins, sinks, water closets, sink counters and stoves etc, are retrieved from the latest approved building plans and are for general indication only.
6. There are exposed pipes mounted at part of flat roof and roof of each tower in the Phase. Only part of the exposed pipes are covered by aluminium cladding.
7. For some residential units, the air conditioner platform(s) outside the residential unit will be placed with outdoor air conditioner unit(s) belonging to that unit and/or other units. The placement of these air-conditioner unit(s) may emit heat and/or sounds.
8. Balconies and utility platforms are non-enclosed area.
9. During the necessary maintenance of the external walls by manager of the Phase, the gondola will be operating in the airspace outside window of residential properties and above flat roof/roof in such tower.
10. There may be non-structural prefabricated external walls and curtain walls in the residential units. The Saleable Area as defined in the Formal Agreement for Sale and Purchase of a residential unit has included the non-structural prefabricated external walls and curtain walls, and is measured from the exterior of such non-structural prefabricated external walls and curtain walls.
11. For details, please refer to the latest approved building plans and/or approved drainage plans and/or relevant plans.

備註:

1. 部份樓層外牆設有建築裝飾及/或外露喉管。
2. 部分住宅單位的露台及/或平台及/或工作平台及/或冷氣機平台及/或外牆或其鄰近地方設有外露及/或被飾板覆蓋的公用喉管。
3. 部分住宅單位客廳、飯廳、睡房、工作間、走廊、浴室、儲物室、洗手間、開放式廚房及廚房天花有跌級樓板及/或假天花用以裝置空調機系統及/或其他機電設備。部分儲物室內設有冷氣及/或機電設備之外露喉管/管道。
4. 部份單位之天花高度將會因應結構、建築及/或裝修設計上的需要而有差異。
5. 樓面平面圖上所顯示的形象裝置符號，例如浴缸、淋浴間、洗手盆、洗滌盆、坐廁、洗滌盆櫃及煮食爐等乃根據最新的經批准的建築圖則，只作一般性標誌。
6. 期數內的每座大樓的平台及天台上裝設有外露喉管，只有部分外露喉管被鋁質飾板所覆蓋。
7. 部份住宅單位外的冷氣機平台將會放置該單位及/或其他單位的一部或多部冷氣戶外機。該等冷氣機的位置可能發出熱力及/或聲音。
8. 露台及工作平台為不可封閉的地方。
9. 在期數管理人員安排外牆之必要維修進行期間，吊船將在該等大樓的住宅物業之窗戶外及平台/天台上之空間運作。
10. 單位可能有非結構預製外牆及幕牆。住宅單位之正式買賣合約所定義之實用面積包括非結構預製外牆及幕牆，並由非結構預製外牆及幕牆之外圍起計。
11. 詳細資料請參考最新批准的建築圖則及/或排水設施圖及/或有關圖則。

11

FLOOR PLANS OF RESIDENTIAL PROPERTIES IN THE PHASE 期數的住宅物業的樓面平面圖

TOWER 1 (1A) & (1B) - 5/F 第1座(1A)及(1B) - 5樓



	Tower 座數	Floor 樓層	Unit 單位								
			A	B	C	D	E	F	G	H	J
The thickness of the floor slabs (excluding plaster) of each residential property (mm) 每個住宅物業的樓板(不包括灰泥)的厚度(毫米)	Tower 1 (1A) 第1座(1A)	5/F 5樓	150, 175, 200	150, 175	150, 175	150, 200	150, 175, 200	150, 175, 200	150, 175	150, 175	150, 175
The floor-to-floor height (refers to height between the top surface of the structural slab of a floor and the top surface of the structural slab of its immediate upper floor) of each residential property (mm) 每個住宅物業的層與層之間的高度(指該樓層之石屎地台面與上一層石屎地台面之高度距離)(毫米)			3150	3150	3150	3150	3150	3150	3150	3150	3150
The thickness of the floor slabs (excluding plaster) of each residential property (mm) 每個住宅物業的樓板(不包括灰泥)的厚度(毫米)	Tower 1 (1B) 第1座(1B)		150	150	150	150, 175, 250					
The floor-to-floor height (refers to height between the top surface of the structural slab of a floor and the top surface of the structural slab of its immediate upper floor) of each residential property (mm) 每個住宅物業的層與層之間的高度(指該樓層之石屎地台面與上一層石屎地台面之高度距離)(毫米)			3150	3150	3150	3150					

The internal areas of the residential properties on the upper floors will generally be slightly larger than those on the lower floors because of the reducing thickness of the structural walls on the upper floors.

因住宅物業的較高樓層的結構牆的厚度遞減，較高樓層的內部面積，一般比較低樓層的內部面積稍大。

Notes:

- The dimensions in the floor plans are all structural dimensions in millimeters and rounded off to the nearest integer.
- For details of the noise mitigation measures, please refer to the Relevant Information section in this sales brochure.
- Please refer to Page 24 of this sales brochure for legend of the terms and abbreviations shown in the floor plan.
- Residential floors start from 5/F. There are no 13/F, 14/F, 24/F and 34/F in each Tower.

備註：

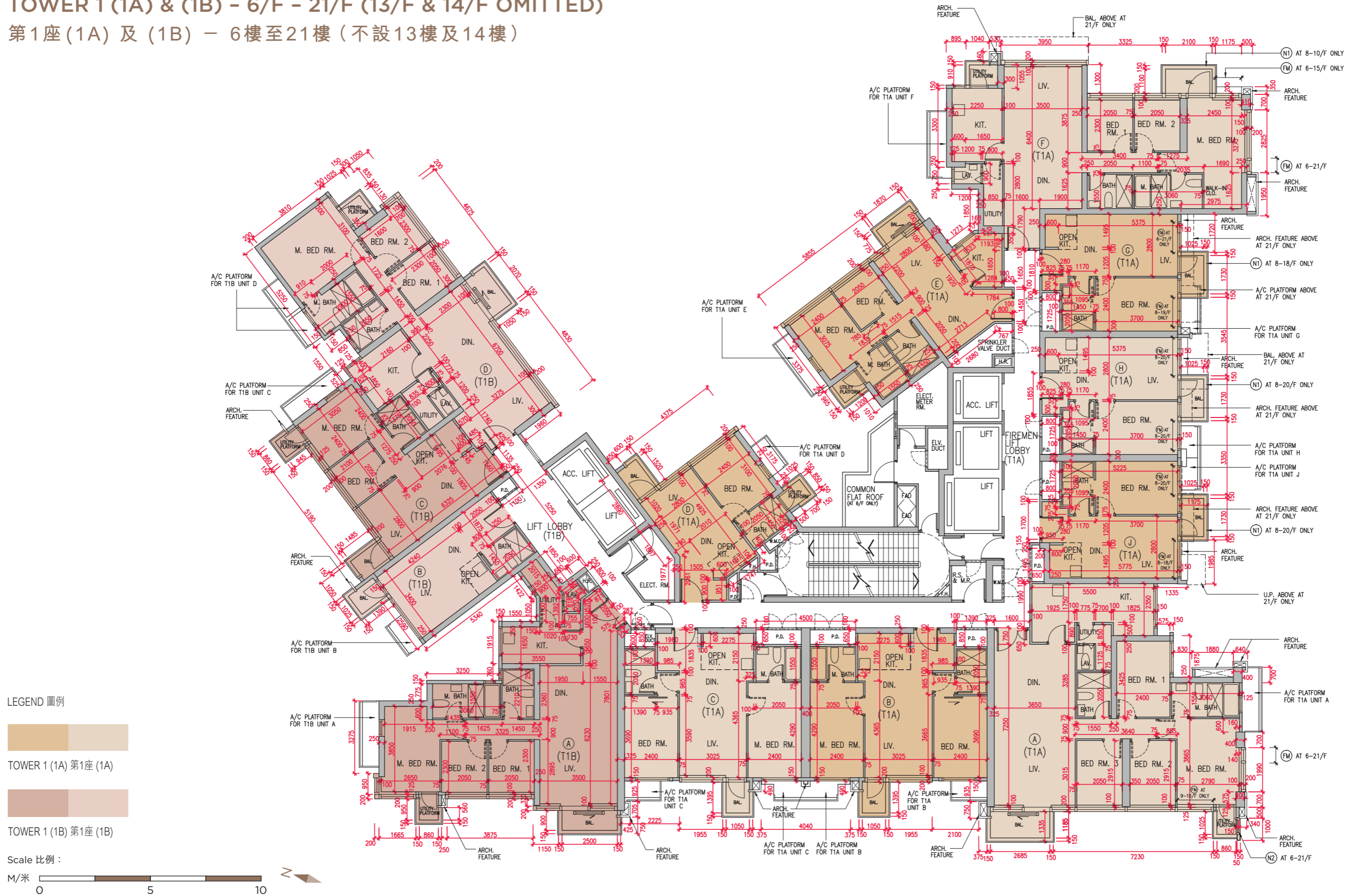
- 樓面平面圖之尺規所列數字為以毫米標示之建築結構尺寸，並以四捨五入至最接近整數。
- 有關噪音緩解措施之詳情，請參閱本售樓說明書的有關資料章節。
- 平面圖中顯示之名詞及簡稱之圖例請參閱本售樓說明書第24頁。
- 住宅樓層由5樓開始。每座不設13樓、14樓、24樓及34樓。

11

FLOOR PLANS OF RESIDENTIAL PROPERTIES IN THE PHASE 期數的住宅物業的樓面平面圖

TOWER 1 (1A) & (1B) - 6/F - 21/F (13/F & 14/F OMITTED)

第1座(1A)及(1B) - 6樓至21樓(不設13樓及14樓)



	Tower 座數	Floor 樓層	Unit 單位								
			A	B	C	D	E	F	G	H	J
The thickness of the floor slabs (excluding plaster) of each residential property (mm) 每個住宅物業的樓板(不包括灰泥)的厚度(毫米)	Tower 1 (1A) 第1座(1A)	6/F - 20/F 6樓至20樓	150, 175, 200	150, 175	150, 175	150, 200	150, 175, 200	150, 175, 200	150, 175	150, 175	150, 175
The floor-to-floor height (refers to height between the top surface of the structural slab of a floor and the top surface of the structural slab of its immediate upper floor) of each residential property (mm) 每個住宅物業的層與層之間的高度(指該樓層之石屎地台面與上一層石屎地台面之高度距離)(毫米)			3150	3150	3150	3150	3150	3150	3150	3150	3150
The thickness of the floor slabs (excluding plaster) of each residential property (mm) 每個住宅物業的樓板(不包括灰泥)的厚度(毫米)	Tower 1 (1A) 第1座(1A)	21/F 21樓	150, 175, 200	150, 175	150, 175	150, 200	150, 175, 200	150, 175, 200	150, 175	150, 175	150, 175
The floor-to-floor height (refers to height between the top surface of the structural slab of a floor and the top surface of the structural slab of its immediate upper floor) of each residential property (mm) 每個住宅物業的層與層之間的高度(指該樓層之石屎地台面與上一層石屎地台面之高度距離)(毫米)			2750, 2800, 2850, 3025, 3150, 3200, 3250, 3500, 3550	3150	3150	3150	3150	3150	2850, 3025, 3085, 3150, 3200, 3210, 3215, 3275, 3500	2850, 3025, 3090, 3150, 3170, 3210, 3325, 3450, 3500	3150, 3500
The thickness of the floor slabs (excluding plaster) of each residential property (mm) 每個住宅物業的樓板(不包括灰泥)的厚度(毫米)	Tower 1 (1B) 第1座(1B)	6/F - 21/F 6樓至21樓	150	150	150	150, 175, 250					
The floor-to-floor height (refers to height between the top surface of the structural slab of a floor and the top surface of the structural slab of its immediate upper floor) of each residential property (mm) 每個住宅物業的層與層之間的高度(指該樓層之石屎地台面與上一層石屎地台面之高度距離)(毫米)			3150	3150	3150	3150					

The internal areas of the residential properties on the upper floors will generally be slightly larger than those on the lower floors because of the reducing thickness of the structural walls on the upper floors.

因住宅物業的較高樓層的結構牆的厚度遞減，較高樓層的內部面積，一般比較低樓層的內部面積稍大。

Notes:

- The dimensions in the floor plans are all structural dimensions in millimeters and rounded off to the nearest integer.
- For details of the noise mitigation measures, please refer to the Relevant Information section in this sales brochure.
- Please refer to Page 24 of this sales brochure for legend of the terms and abbreviations shown in the floor plan.
- Residential floors start from 5/F. There are no 13/F, 14/F, 24/F and 34/F in each Tower.

備註：

- 樓面平面圖之尺規所列數字為以毫米標示之建築結構尺寸，並以四捨五入至最接近整數。
- 有關噪音緩解措施之詳情，請參閱本售樓說明書的有關資料章節。
- 平面圖中顯示之名詞及簡稱之圖例請參閱本售樓說明書第24頁。
- 住宅樓層由5樓開始。每座不設13樓、14樓、24樓及34樓。

11

FLOOR PLANS OF RESIDENTIAL PROPERTIES IN THE PHASE

期數的住宅物業的樓面平面圖

TOWER 1 (1A) & (1B) - 22/F

第1座(1A)及(1B) - 22樓



	Tower 座數	Floor 樓層	Unit 單位							
			A	B	C	D	E	F	G	
The thickness of the floor slabs (excluding plaster) of each residential property (mm) 每個住宅物業的樓板(不包括灰泥)的厚度(毫米)	Tower 1 (1A) 第1座(1A)	22/F 22樓	150, 175, 200	150, 175	150, 175	150, 200	150, 175, 200	150, 175, 200	150, 175	
The floor-to-floor height (refers to height between the top surface of the structural slab of a floor and the top surface of the structural slab of its immediate upper floor) of each residential property (mm) 每個住宅物業的層與層之間的高度(指該樓層之石屎地台面與上一層石屎地台面之高度距離)(毫米)			3150	2800, 2850, 2860, 2975, 3090, 3100, 3150, 3210, 3275, 3450, 3500	2800, 2850, 2860, 2975, 3090, 3100, 3150, 3200, 3210, 3275, 3450, 3500	3150	3150	3150	3150	
The thickness of the floor slabs (excluding plaster) of each residential property (mm) 每個住宅物業的樓板(不包括灰泥)的厚度(毫米)	Tower 1 (1B) 第1座(1B)		150	150	150	150, 175, 250				
The floor-to-floor height (refers to height between the top surface of the structural slab of a floor and the top surface of the structural slab of its immediate upper floor) of each residential property (mm) 每個住宅物業的層與層之間的高度(指該樓層之石屎地台面與上一層石屎地台面之高度距離)(毫米)			3150	3150	3150	3150				

The internal areas of the residential properties on the upper floors will generally be slightly larger than those on the lower floors because of the reducing thickness of the structural walls on the upper floors.

因住宅物業的較高樓層的結構牆的厚度遞減，較高樓層的內部面積，一般比較低樓層的內部面積稍大。

Notes:

- The dimensions in the floor plans are all structural dimensions in millimeters and rounded off to the nearest integer.
- For details of the noise mitigation measures, please refer to the Relevant Information section in this sales brochure.
- Please refer to Page 24 of this sales brochure for legend of the terms and abbreviations shown in the floor plan.
- Residential floors start from 5/F. There are no 13/F, 14/F, 24/F and 34/F in each Tower.

備註：

- 樓面平面圖之尺規所列數字為以毫米標示之建築結構尺寸，並以四捨五入至最接近整數。
- 有關噪音緩解措施之詳情，請參閱本售樓說明書的有關資料章節。
- 平面圖中顯示之名詞及簡稱之圖例請參閱本售樓說明書第24頁。
- 住宅樓層由5樓開始。每座不設13樓、14樓、24樓及34樓。

11

FLOOR PLANS OF RESIDENTIAL PROPERTIES IN THE PHASE 期數的住宅物業的樓面平面圖

TOWER 1 (1A) & (1B) - 23/F - 40/F (24/F & 34/F OMITTED)

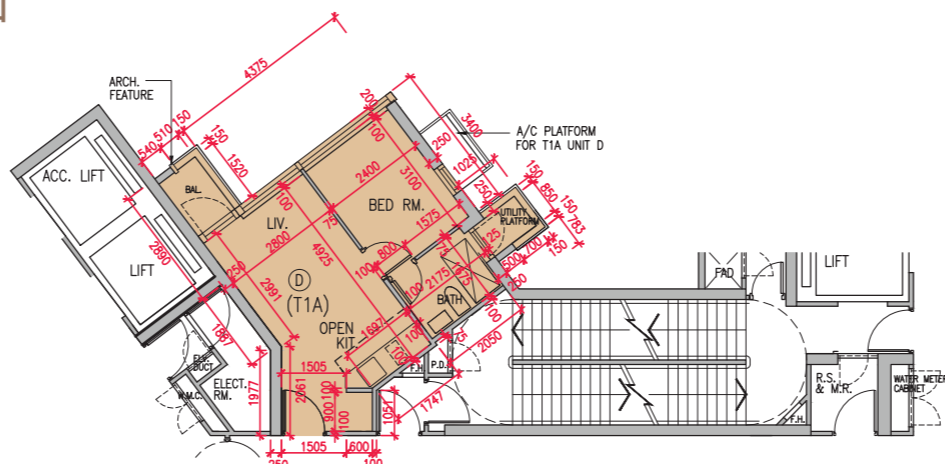
第1座(1A)及(1B) - 23樓至40樓
(不設24樓及34樓)

Note 1: This floor plan of Unit D of Tower 1 (1A) is applicable to 23/F 37/F only.

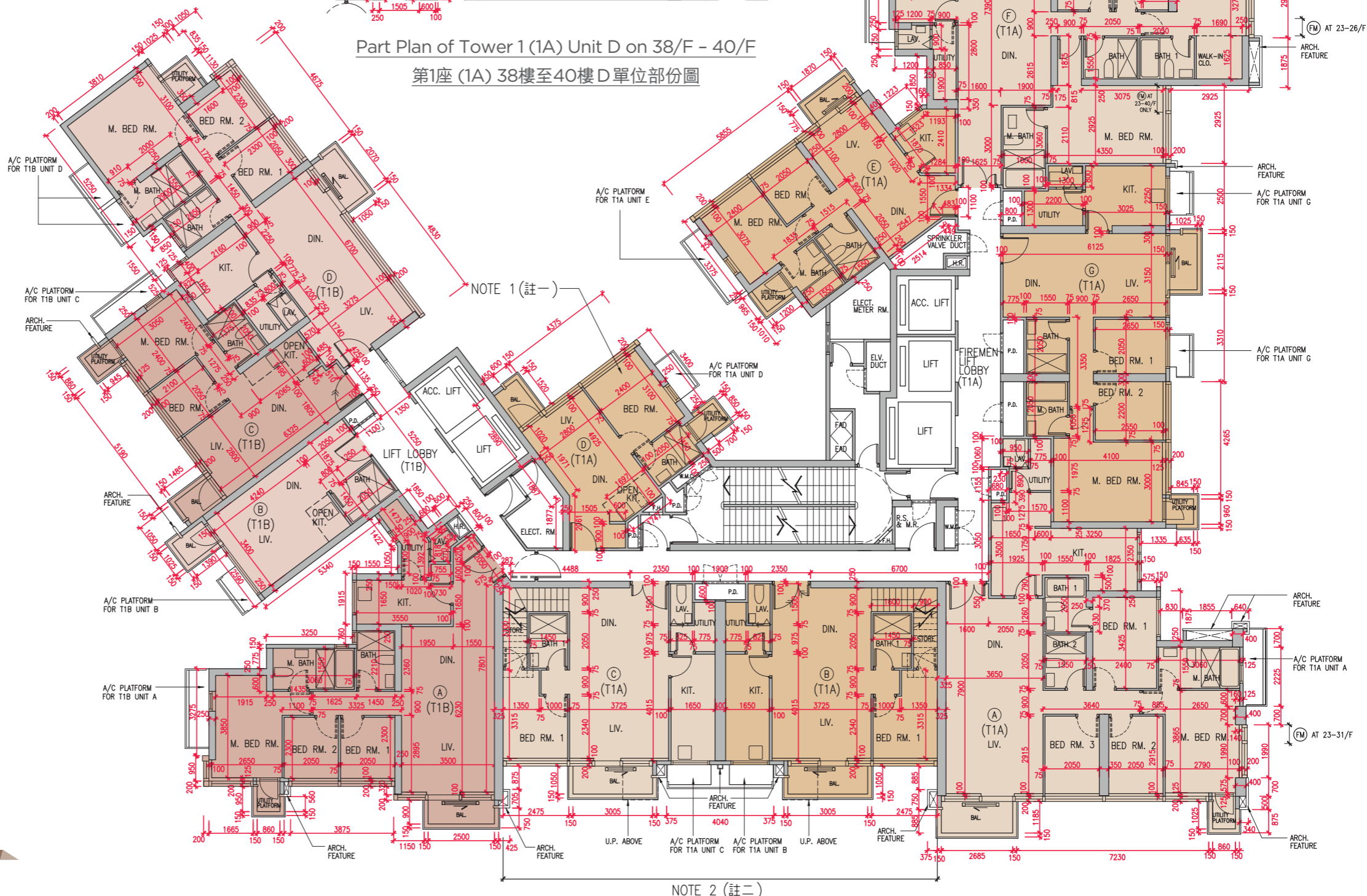
Note 2: This floor plan of Unit B and Unit C (Duplex Units) of Tower 1 (1A) is only applicable to 23/F (lower duplex). For floor plans of Units B and Units C (Duplex Units) on 25/F (upper duplex), 26/F & 27/F, 28/F & 29/F, 30/F & 31/F, 32/F & 33/F, 35/F & 36/F, 37/F & 38/F and 39/F & 40/F of Tower 1 (1A), please refer to page 36 of this sales brochure.

註一：此第1座(1A)D單位之樓面平面圖只適用於23樓至37樓。

註二：此第1座(1A)B單位及C單位(複式單位)之樓面平面圖只適用於23樓(複式單位下層)。就第1座(1A)25樓(複式單位上層)、26樓及27樓、28樓及29樓、30樓及31樓、32樓及33樓、35樓及36樓、37樓及38樓、39樓及40樓B單位及C單位(複式單位)之樓面平面圖，請參閱本售樓說明書第36頁。



Part Plan of Tower 1 (1A) Unit D on 38/F - 40/F
第1座(1A)38樓至40樓D單位部份圖



LEGEND 圖例

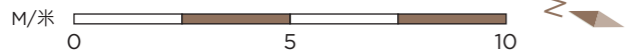


TOWER 1 (1A) 第1座(1A)



TOWER 1 (1B) 第1座(1B)

Scale 比例：



NOTE 2 (註二)

	Tower 座數	Floor 樓層	Unit 單位							
			A	B	C	D	E	F	G	
The thickness of the floor slabs (excluding plaster) of each residential property (mm) 每個住宅物業的樓板(不包括灰泥)的厚度(毫米)	Tower 1 (1A) 第1座(1A)	23/F - 36/F 23樓至36樓	150, 175, 200				150, 200	150, 175, 200	150, 175, 200	150, 175
The floor-to-floor height (refers to height between the top surface of the structural slab of a floor and the top surface of the structural slab of its immediate upper floor) of each residential property (mm) 每個住宅物業的層與層之間的高度(指該樓層之石屎地台面與上一層石屎地台面之高度距離)(毫米)			3150				3150	3150	3150	
The thickness of the floor slabs (excluding plaster) of each residential property (mm) 每個住宅物業的樓板(不包括灰泥)的厚度(毫米)	Tower 1 (1A) 第1座(1A)	37/F 37樓	150, 175, 200				150, 200	150, 175, 200	150, 175, 200	150, 175
The floor-to-floor height (refers to height between the top surface of the structural slab of a floor and the top surface of the structural slab of its immediate upper floor) of each residential property (mm) 每個住宅物業的層與層之間的高度(指該樓層之石屎地台面與上一層石屎地台面之高度距離)(毫米)			3150				3150, 3440, 3500	3150	3150	3150
The thickness of the floor slabs (excluding plaster) of each residential property (mm) 每個住宅物業的樓板(不包括灰泥)的厚度(毫米)	Tower 1 (1B) 第1座(1B)	23/F - 37/F 23樓至37樓	150	150	150	150, 175, 250				
The floor-to-floor height (refers to height between the top surface of the structural slab of a floor and the top surface of the structural slab of its immediate upper floor) of each residential property (mm) 每個住宅物業的層與層之間的高度(指該樓層之石屎地台面與上一層石屎地台面之高度距離)(毫米)			3150	3150	3150	3150				

The internal areas of the residential properties on the upper floors will generally be slightly larger than those on the lower floors because of the reducing thickness of the structural walls on the upper floors.

因住宅物業的較高樓層的結構牆的厚度遞減，較高樓層的內部面積，一般比較低樓層的內部面積稍大。

Notes:

- The dimensions in the floor plans are all structural dimensions in millimeters and rounded off to the nearest integer.
- For details of the noise mitigation measures, please refer to the Relevant Information section in this sales brochure.
- Please refer to Page 24 of this sales brochure for legend of the terms and abbreviations shown in the floor plan.
- Residential floors start from 5/F. There are no 13/F, 14/F, 24/F and 34/F in each Tower.
- For information of Units B and Units C (Duplex Units) on 23/F & 25/F, 26/F & 27/F, 28/F & 29/F, 30/F & 31/F, 32/F & 33/F, 35/F & 36/F, 37/F & 38/F and 39/F & 40/F of Tower 1 (1A), please refer to page 37 of this sales brochure.

備註：

- 樓面平面圖之尺規所列數字為以毫米標示之建築結構尺寸，並以四捨五入至最接近整數。
- 有關噪音緩解措施之詳情，請參閱本售樓說明書的有關資料章節。
- 平面圖中顯示之名詞及簡稱之圖例請參閱本售樓說明書第24頁。
- 住宅樓層由5樓開始。每座不設13樓、14樓、24樓及34樓。
- 有關第1座(1A) 23樓及25樓、26樓及27樓、28樓及29樓、30樓及31樓、32樓及33樓、35樓及36樓、37樓及38樓、39樓及40樓B單位及C單位(複式單位)之資料，請參閱本售樓說明書第37頁。

11

FLOOR PLANS OF RESIDENTIAL PROPERTIES IN THE PHASE 期數的住宅物業的樓面平面圖

	Tower 座數	Floor 樓層	Unit 單位						
			A	B	C	D	E	F	G
The thickness of the floor slabs (excluding plaster) of each residential property (mm) 每個住宅物業的樓板(不包括灰泥)的厚度(毫米)	Tower 1 (1A) 第1座(1A)	38/F - 39/F 38樓至39樓	150, 175, 200			150, 200	150, 175, 200	150, 175, 200	150, 175
The floor-to-floor height (refers to height between the top surface of the structural slab of a floor and the top surface of the structural slab of its immediate upper floor) of each residential property (mm) 每個住宅物業的層與層之間的高度(指該樓層之石屎地台面與上一層石屎地台面之高度距離)(毫米)			3460			3460	3460	3460	3460
The thickness of the floor slabs (excluding plaster) of each residential property (mm) 每個住宅物業的樓板(不包括灰泥)的厚度(毫米)	Tower 1 (1B) 第1座(1B)		150	150	150	150, 175, 250			
The floor-to-floor height (refers to height between the top surface of the structural slab of a floor and the top surface of the structural slab of its immediate upper floor) of each residential property (mm) 每個住宅物業的層與層之間的高度(指該樓層之石屎地台面與上一層石屎地台面之高度距離)(毫米)			3460	3460	3460	3460			

The internal areas of the residential properties on the upper floors will generally be slightly larger than those on the lower floors because of the reducing thickness of the structural walls on the upper floors.

因住宅物業的較高樓層的結構牆的厚度遞減，較高樓層的內部面積，一般比較低樓層的內部面積稍大。

Notes:

- The dimensions in the floor plans are all structural dimensions in millimeters and rounded off to the nearest integer.
- For details of the noise mitigation measures, please refer to the Relevant Information section in this sales brochure.
- Please refer to Page 24 of this sales brochure for legend of the terms and abbreviations shown in the floor plan.
- Residential floors start from 5/F. There are no 13/F, 14/F, 24/F and 34/F in each Tower.
- For information of Units B and Units C (Duplex Units) on 23/F & 25/F, 26/F & 27/F, 28/F & 29/F, 30/F & 31/F, 32/F & 33/F, 35/F & 36/F, 37/F & 38/F and 39/F & 40/F of Tower 1 (1A), please refer to page 37 of this sales brochure.

備註：

- 樓面平面圖之尺規所列數字為以毫米標示之建築結構尺寸，並以四捨五入至最接近整數。
- 有關噪音緩解措施之詳情，請參閱本售樓說明書的有關資料章節。
- 平面圖中顯示之名詞及簡稱之圖例請參閱本售樓說明書第24頁。
- 住宅樓層由5樓開始。每座不設13樓、14樓、24樓及34樓。
- 有關第1座(1A) 23樓及25樓、26樓及27樓、28樓及29樓、30樓及31樓、32樓及33樓、35樓及36樓、37樓及38樓、39樓及40樓B單位及C單位(複式單位)之資料，請參閱本售樓說明書第37頁。

	Tower 座數	Floor 樓層	Unit 單位						
			A	B	C	D	E	F	G
The thickness of the floor slabs (excluding plaster) of each residential property (mm) 每個住宅物業的樓板(不包括灰泥)的厚度(毫米)	Tower 1 (1A) 第1座(1A)	40/F 40樓	150, 175, 200			150, 200	150, 175, 200	150, 175, 200	150, 175
The floor-to-floor height (refers to height between the top surface of the structural slab of a floor and the top surface of the structural slab of its immediate upper floor) of each residential property (mm) 每個住宅物業的層與層之間的高度(指該樓層之石屎地台面與上一層石屎地台面之高度距離)(毫米)			3060, 3110, 3160, 3170, 3235, 3260, 3285, 3360, 3395, 3410, 3460, 3485, 3510, 3520, 3700, 3710, 3760, 3810, 3860			3460	3160, 3460	3160, 3210, 3295, 3460, 3510, 3520, 3560, 3585, 3760, 3460	3160, 3460
The thickness of the floor slabs (excluding plaster) of each residential property (mm) 每個住宅物業的樓板(不包括灰泥)的厚度(毫米)	Tower 1 (1B) 第1座(1B)	40/F 40樓	150	150	150	150, 175, 250			
The floor-to-floor height (refers to height between the top surface of the structural slab of a floor and the top surface of the structural slab of its immediate upper floor) of each residential property (mm) 每個住宅物業的層與層之間的高度(指該樓層之石屎地台面與上一層石屎地台面之高度距離)(毫米)			3460	3460	3460	3460			

The internal areas of the residential properties on the upper floors will generally be slightly larger than those on the lower floors because of the reducing thickness of the structural walls on the upper floors.

因住宅物業的較高樓層的結構牆的厚度遞減，較高樓層的內部面積，一般比較低樓層的內部面積稍大。

Notes:

- The dimensions in the floor plans are all structural dimensions in millimeters and rounded off to the nearest integer.
- For details of the noise mitigation measures, please refer to the Relevant Information section in this sales brochure.
- Please refer to Page 24 of this sales brochure for legend of the terms and abbreviations shown in the floor plan.
- Residential floors start from 5/F. There are no 13/F, 14/F, 24/F and 34/F in each Tower.
- For information of Units B and Units C (Duplex Units) on 23/F & 25/F, 26/F & 27/F, 28/F & 29/F, 30/F & 31/F, 32/F & 33/F, 35/F & 36/F, 37/F & 38/F and 39/F & 40/F of Tower 1 (1A), please refer to page 37 of this sales brochure.

備註：

- 樓面平面圖之尺規所列數字為以毫米標示之建築結構尺寸，並以四捨五入至最接近整數。
- 有關噪音緩解措施之詳情，請參閱本售樓說明書的有關資料章節。
- 平面圖中顯示之名詞及簡稱之圖例請參閱本售樓說明書第24頁。
- 住宅樓層由5樓開始。每座不設13樓、14樓、24樓及34樓。
- 有關第1座(1A) 23樓及25樓、26樓及27樓、28樓及29樓、30樓及31樓、32樓及33樓、35樓及36樓、37樓及38樓、39樓及40樓B單位及C單位(複式單位)之資料，請參閱本售樓說明書第37頁。

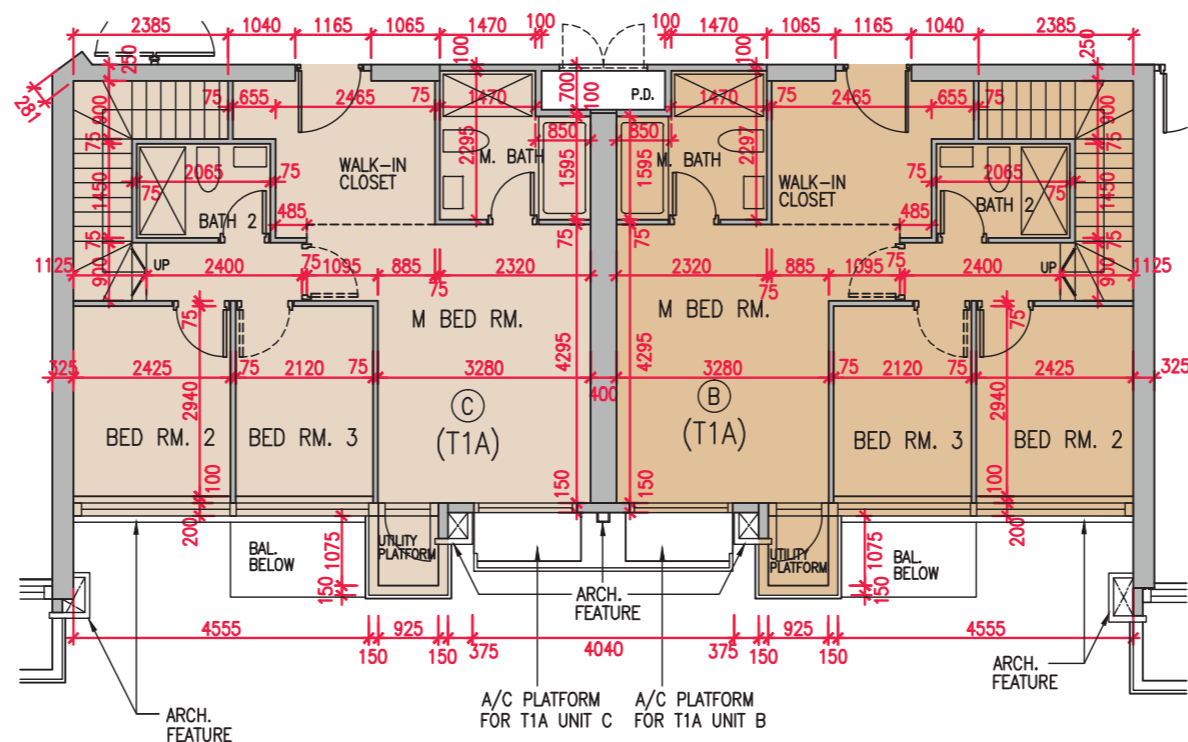
11

FLOOR PLANS OF RESIDENTIAL PROPERTIES IN THE PHASE 期數的住宅物業的樓面平面圖

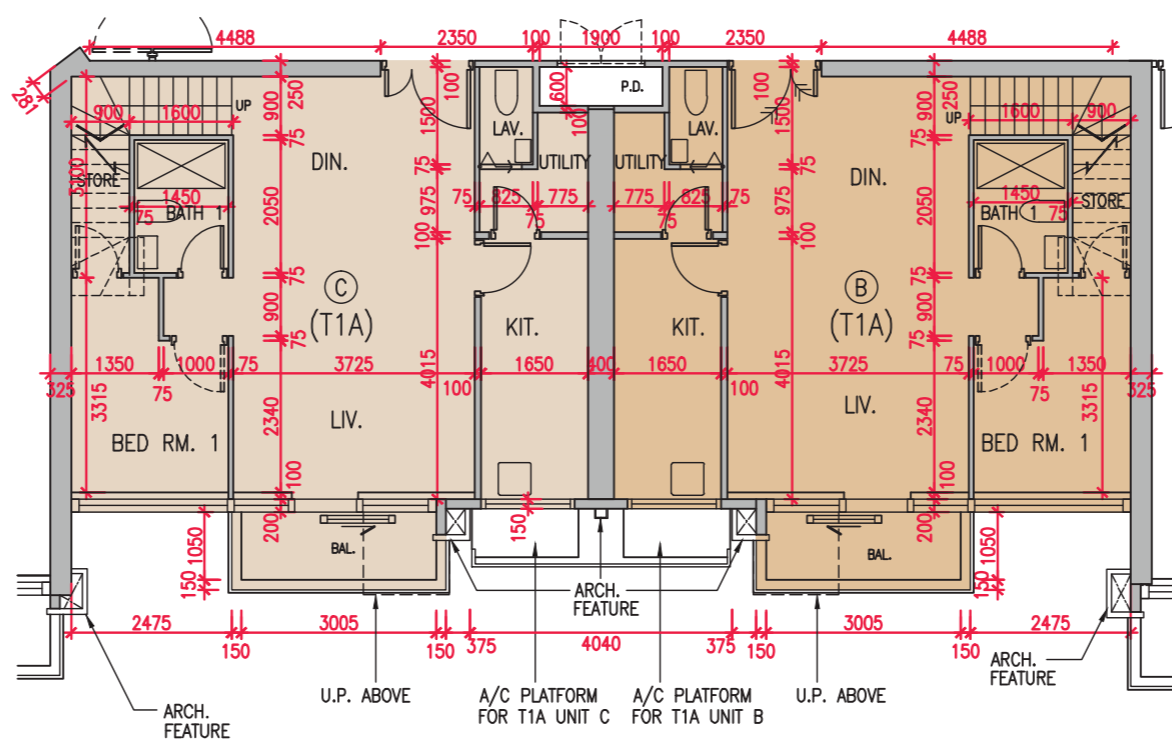
TOWER 1 (1A) — UNITS B AND UNITS C (DUPLEX UNITS)

ON 23/F & 25/F, 26/F & 27/F, 28/F & 29/F, 30/F & 31/F, 32/F & 33/F, 35/F & 36/F, 37/F & 38/F, 39/F & 40/F

第1座(1A) — 23樓及25樓、26樓及27樓、28樓及29樓、30樓及31樓、32樓及33樓、35樓及36樓、37樓及38樓、39樓及40樓之B單位及C單位(複式單位)



Upper part of Units B and Units C
(Duplex Units) on 25/F, 27/F, 29/F,
31/F, 33/F, 36/F, 38/F, 40/F
25樓、27樓、29樓、31樓、
33樓、36樓、38樓、40樓
之B單位及C單位(複式單位)上層



Lower part of Units B and Units C
(Duplex Units) on 23/F, 26/F, 28/F,
30/F, 32/F, 35/F, 37/F, 39/F
23樓、26樓、28樓、30樓、
32樓、35樓、37樓、39樓
之B單位及C單位(複式單位)下層

LEGEND 圖例



TOWER 1 (1A) 第1座(1A)

Scale 比例:



	Tower 座數	Floor 樓層	Unit 單位			
			B		C	
The thickness of the floor slabs (excluding plaster) of each residential property (mm) 每個住宅物業的樓板(不包括灰泥)的厚度(毫米)	Tower 1 (1A) 第1座 (1A)	23/F & 25/F, 26/F & 27/F, 28/F & 29/F, 30/F & 31/F, 32/F & 33/F, 35/F & 36/F, 37/F	Lower part of Duplex Unit 複式單位下層	150, 175	Lower part of Duplex Unit 複式單位下層	150, 175
The floor-to-floor height (refers to height between the top surface of the structural slab of a floor and the top surface of the structural slab of its immediate upper floor) of each residential property (mm) 每個住宅物業的層與層之間的高度(指該樓層之石屎地台面與上一層石屎地台面之高度距離)(毫米)				2850, 2860, 3025, 3090, 3100, 3150, 3325, 3440, 3450, 3500		2850, 2860, 3025, 3090, 3100, 3150, 3325, 3440, 3450, 3500
The thickness of the floor slabs (excluding plaster) of each residential property (mm) 每個住宅物業的樓板(不包括灰泥)的厚度(毫米)			Upper part of Duplex Unit 複式單位上層	150, 175	Upper part of Duplex Unit 複式單位上層	150, 175
The floor-to-floor height (refers to height between the top surface of the structural slab of a floor and the top surface of the structural slab of its immediate upper floor) of each residential property (mm) 每個住宅物業的層與層之間的高度(指該樓層之石屎地台面與上一層石屎地台面之高度距離)(毫米)				2800, 2850, 2860, 2975, 3150, 3200, 3210, 3275, 3440, 3450		2800, 2850, 2860, 2975, 3150, 3200, 3210, 3275, 3440, 3450
The thickness of the floor slabs (excluding plaster) of each residential property (mm) 每個住宅物業的樓板(不包括灰泥)的厚度(毫米)	Tower 1 (1A) 第1座 (1A)	38/F 38樓	Upper part of Duplex Unit 複式單位上層	150, 175	Upper part of Duplex Unit 複式單位上層	150, 175
The floor-to-floor height (refers to height between the top surface of the structural slab of a floor and the top surface of the structural slab of its immediate upper floor) of each residential property (mm) 每個住宅物業的層與層之間的高度(指該樓層之石屎地台面與上一層石屎地台面之高度距離)(毫米)				3110, 3160, 3170, 3285, 3460, 3510, 3520, 3585, 3750, 3760		3110, 3160, 3170, 3285, 3460, 3510, 3520, 3585, 3750, 3760
The thickness of the floor slabs (excluding plaster) of each residential property (mm) 每個住宅物業的樓板(不包括灰泥)的厚度(毫米)	Tower 1 (1A) 第1座 (1A)	39/F & 40/F 39樓及40樓	Lower part of Duplex Unit 複式單位下層	150, 175	Lower part of Duplex Unit 複式單位下層	150, 175
The floor-to-floor height (refers to height between the top surface of the structural slab of a floor and the top surface of the structural slab of its immediate upper floor) of each residential property (mm) 每個住宅物業的層與層之間的高度(指該樓層之石屎地台面與上一層石屎地台面之高度距離)(毫米)				3160, 3170, 3335, 3400, 3410, 3460, 3635, 3750, 3760, 3810		3160, 3170, 3335, 3400, 3410, 3460, 3635, 3750, 3760, 3810
The thickness of the floor slabs (excluding plaster) of each residential property (mm) 每個住宅物業的樓板(不包括灰泥)的厚度(毫米)			Upper part of Duplex Unit 複式單位上層	150, 175	Upper part of Duplex Unit 複式單位上層	150, 175
The floor-to-floor height (refers to height between the top surface of the structural slab of a floor and the top surface of the structural slab of its immediate upper floor) of each residential property (mm) 每個住宅物業的層與層之間的高度(指該樓層之石屎地台面與上一層石屎地台面之高度距離)(毫米)				3110, 3160, 3170, 3285, 3460, 3510, 3520, 3585, 3750, 3760		3110, 3160, 3170, 3285, 3460, 3510, 3520, 3585, 3750, 3760

The internal areas of the residential properties on the upper floors will generally be slightly larger than those on the lower floors because of the reducing thickness of the structural walls on the upper floors.

因住宅物業的較高樓層的結構牆的厚度遞減，較高樓層的內部面積，一般比較低樓層的內部面積稍大。

Notes:

- The dimensions in the floor plans are all structural dimensions in millimeters and rounded off to the nearest integer.
- For details of the noise mitigation measures, please refer to the Relevant Information section in this sales brochure.
- Please refer to Page 24 of this sales brochure for legend of the terms and abbreviations shown in the floor plan.
- Residential floors start from 5/F. There are no 13/F, 14/F, 24/F and 34/F in each Tower.

備註：

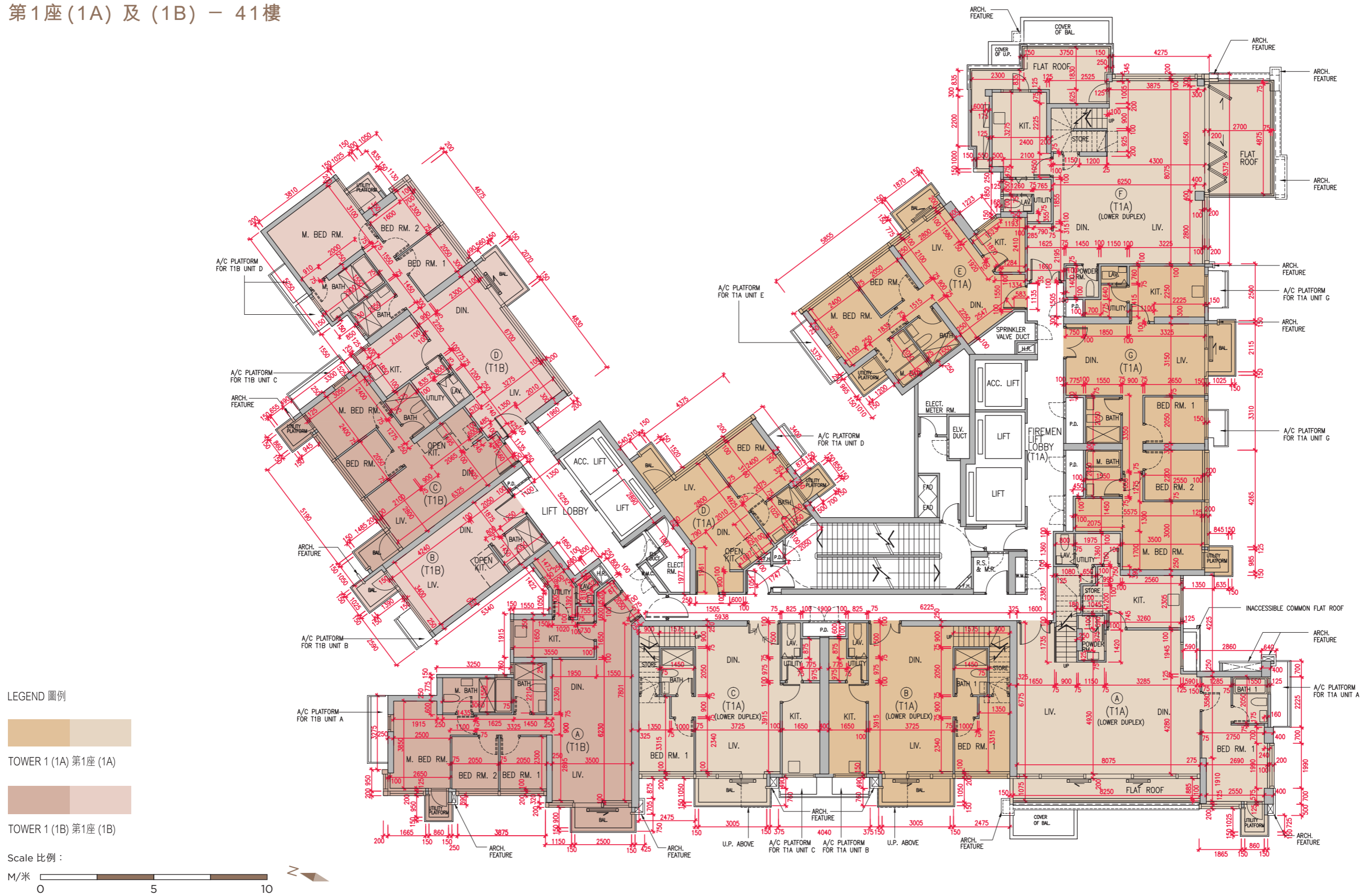
- 樓面平面圖之尺規所列數字為以毫米標示之建築結構尺寸，並以四捨五入至最接近整數。
- 有關噪音緩解措施之詳情，請參閱本售樓說明書的有關資料章節。
- 平面圖中顯示之名詞及簡稱之圖例請參閱本售樓說明書第24頁。
- 住宅樓層由5樓開始。每座不設13樓、14樓、24樓及34樓。

11

FLOOR PLANS OF RESIDENTIAL PROPERTIES IN THE PHASE 期數的住宅物業的樓面平面圖

TOWER 1 (1A) & (1B) - 41/F

第1座(1A)及(1B) - 41樓



	Tower 座數	Floor 樓層	Lower part of Unit A (Duplex Unit) on 41/F & 42/F 41樓及42樓A單位 (複式單位)下層	Lower part of Unit B (Duplex Unit) on 41/F & 42/F 41樓及42樓B單位 (複式單位)下層	Lower part of Unit C (Duplex Unit) on 41/F & 42/F 41樓及42樓C單位 (複式單位)下層	Unit 單位		Lower part of Unit F (Duplex Unit) on 41/F & 42/F 41樓及42樓F單位 (複式單位)下層	Unit 單位	
			D	E	G					
The thickness of the floor slabs (excluding plaster) of each residential property (mm) 每個住宅物業的樓板(不包括灰泥)的厚度(毫米)	Tower 1 (1A) 第1座(1A)	41/F 41樓	150, 175, 200	150, 175	150, 175	150, 200	150, 200	150, 200, 225, 250	150, 175, 225	
The floor-to-floor height (refers to height between the top surface of the structural slab of a floor and the top surface of the structural slab of its immediate upper floor) of each residential property (mm) 每個住宅物業的層與層之間的高度(指該樓層之石屎地台面與上一層石屎地台面之高度距離)(毫米)			3460	3160, 3170, 3335, 3400, 3410, 3460, 3635, 3750, 3760, 3810	3160, 3170, 3335, 3400, 3410, 3460, 3635, 3750, 3760, 3810	3460	3460	3460	3460	
		41/F 41樓	Unit 單位							
			A	B	C	D				
The thickness of the floor slabs (excluding plaster) of each residential property (mm) 每個住宅物業的樓板(不包括灰泥)的厚度(毫米)	Tower 1 (1B) 第1座(1B)	41/F 41樓	150	150	150	150, 175, 250				
The floor-to-floor height (refers to height between the top surface of the structural slab of a floor and the top surface of the structural slab of its immediate upper floor) of each residential property (mm) 每個住宅物業的層與層之間的高度(指該樓層之石屎地台面與上一層石屎地台面之高度距離)(毫米)			3460	3460	3460	3460	3460			

The internal areas of the residential properties on the upper floors will generally be slightly larger than those on the lower floors because of the reducing thickness of the structural walls on the upper floors.

因住宅物業的較高樓層的結構牆的厚度遞減，較高樓層的內部面積，一般比較低樓層的內部面積稍大。

Notes:

- The dimensions in the floor plans are all structural dimensions in millimeters and rounded off to the nearest integer.
- For details of the noise mitigation measures, please refer to the Relevant Information section in this sales brochure.
- Please refer to Page 24 of this sales brochure for legend of the terms and abbreviations shown in the floor plan.
- Residential floors start from 5/F. There are no 13/F, 14/F, 24/F and 34/F in each Tower.

備註：

- 樓面平面圖之尺規所列數字為以毫米標示之建築結構尺寸，並以四捨五入至最接近整數。
- 有關噪音緩解措施之詳情，請參閱本售樓說明書的有關資料章節。
- 平面圖中顯示之名詞及簡稱之圖例請參閱本售樓說明書第24頁。
- 住宅樓層由5樓開始。每座不設13樓、14樓、24樓及34樓。

11

FLOOR PLANS OF RESIDENTIAL PROPERTIES IN THE PHASE 期數的住宅物業的樓面平面圖

TOWER 1 (1A) & (1B) - 42/F

第1座(1A)及(1B) - 42樓



	Tower 座數	Floor 樓層	Upper part of Unit A (Duplex Unit) on 41/F & 42/F 41樓及42樓A單位 (複式單位)上層	Upper part of Unit B (Duplex Unit) on 41/F & 42/F 41樓及42樓B單位 (複式單位)上層	Upper part of Unit C (Duplex Unit) on 41/F & 42/F 41樓及42樓C單位 (複式單位)上層	Upper part of Unit D (Duplex Unit) on 41/F & 42/F 41樓及42樓D單位 (複式單位)上層	E
The thickness of the floor slabs (excluding plaster) of each residential property (mm) 每個住宅物業的樓板(不包括灰泥)的厚度(毫米)	Tower 1 (1A) 第1座(1A)		200	200	200	200	200
The floor-to-floor height (refers to height between the top surface of the structural slab of a floor and the top surface of the structural slab of its immediate upper floor) of each residential property (mm) 每個住宅物業的層與層之間的高度(指該樓層之石屎地台面與上一層石屎地台面之高度距離)(毫米)			3460	3460	3460	3460	3460, 3520, 3760, 3810
		42/F 42樓	Unit 單位				
			A	B	C	D	
The thickness of the floor slabs (excluding plaster) of each residential property (mm) 每個住宅物業的樓板(不包括灰泥)的厚度(毫米)	Tower 1 (1B) 第1座(1B)		200	200	200	200, 250	
The floor-to-floor height (refers to height between the top surface of the structural slab of a floor and the top surface of the structural slab of its immediate upper floor) of each residential property (mm) 每個住宅物業的層與層之間的高度(指該樓層之石屎地台面與上一層石屎地台面之高度距離)(毫米)			3460, 3520, 3585, 3760, 3810	3460, 3520, 3810	3460, 3520, 3760, 3810, 3860	3460, 3520, 3585, 3760, 3810, 3860	

The internal areas of the residential properties on the upper floors will generally be slightly larger than those on the lower floors because of the reducing thickness of the structural walls on the upper floors.

因住宅物業的較高樓層的結構牆的厚度遞減，較高樓層的內部面積，一般比較低樓層的內部面積稍大。

Notes:

- The dimensions in the floor plans are all structural dimensions in millimeters and rounded off to the nearest integer.
- For details of the noise mitigation measures, please refer to the Relevant Information section in this sales brochure.
- Please refer to Page 24 of this sales brochure for legend of the terms and abbreviations shown in the floor plan.
- Residential floors start from 5/F. There are no 13/F, 14/F, 24/F and 34/F in each Tower.

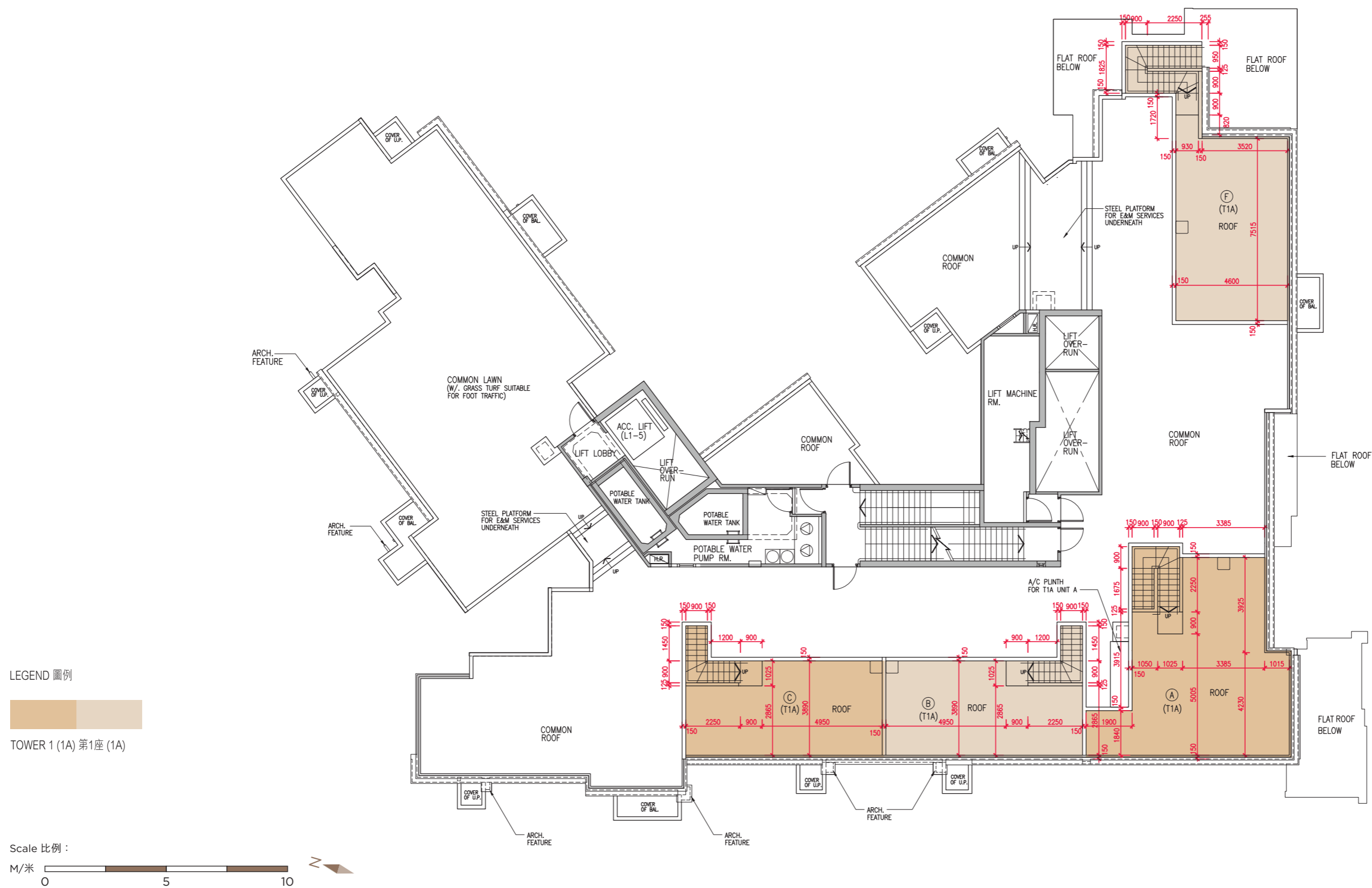
備註：

- 樓面平面圖之尺規所列數字為以毫米標示之建築結構尺寸，並以四捨五入至最接近整數。
- 有關噪音緩解措施之詳情，請參閱本售樓說明書的有關資料章節。
- 平面圖中顯示之名詞及簡稱之圖例請參閱本售樓說明書第24頁。
- 住宅樓層由5樓開始。每座不設13樓、14樓、24樓及34樓。

11

FLOOR PLANS OF RESIDENTIAL PROPERTIES IN THE PHASE 期數的住宅物業的樓面平面圖

TOWER 1 (1A) & (1B) - ROOF 第1座(1A)及(1B) - 天台



	Tower 座數	Floor 樓層	Unit A (Duplex Unit) on 41/F & 42/F 41樓及42樓 A單位 (複式單位)	Unit B (Duplex Unit) on 41/F & 42/F 41樓及42樓 B單位 (複式單位)	Unit C (Duplex Unit) on 41/F & 42/F 41樓及42樓 C單位 (複式單位)	Unit F (Duplex Unit) on 41/F & 42/F 41樓及42樓 F單位 (複式單位)
The thickness of the floor slabs (excluding plaster) of each residential property (mm) 每個住宅物業的樓板(不包括灰泥)的厚度(毫米)			Not applicable 不適用	Not applicable 不適用	Not applicable 不適用	Not applicable 不適用
The floor-to-floor height (refers to height between the top surface of the structural slab of a floor and the top surface of the structural slab of its immediate upper floor) of each residential property (mm) 每個住宅物業的層與層之間的高度(指該樓層之石屎地台面與上一層石屎地台面之高度距離)(毫米)	Tower 1 (1A) 第1座(1A)	Roof 天台	Not applicable 不適用	Not applicable 不適用	Not applicable 不適用	Not applicable 不適用

The internal areas of the residential properties on the upper floors will generally be slightly larger than those on the lower floors because of the reducing thickness of the structural walls on the upper floors.

因住宅物業的較高樓層的結構牆的厚度遞減，較高樓層的內部面積，一般比較低樓層的內部面積稍大。

Notes:

- The dimensions in the floor plans are all structural dimensions in millimeters and rounded off to the nearest integer.
- For details of the noise mitigation measures, please refer to the Relevant Information section in this sales brochure.
- Please refer to Page 24 of this sales brochure for legend of the terms and abbreviations shown in the floor plan.
- Residential floors start from 5/F. There are no 13/F, 14/F, 24/F and 34/F in each Tower.

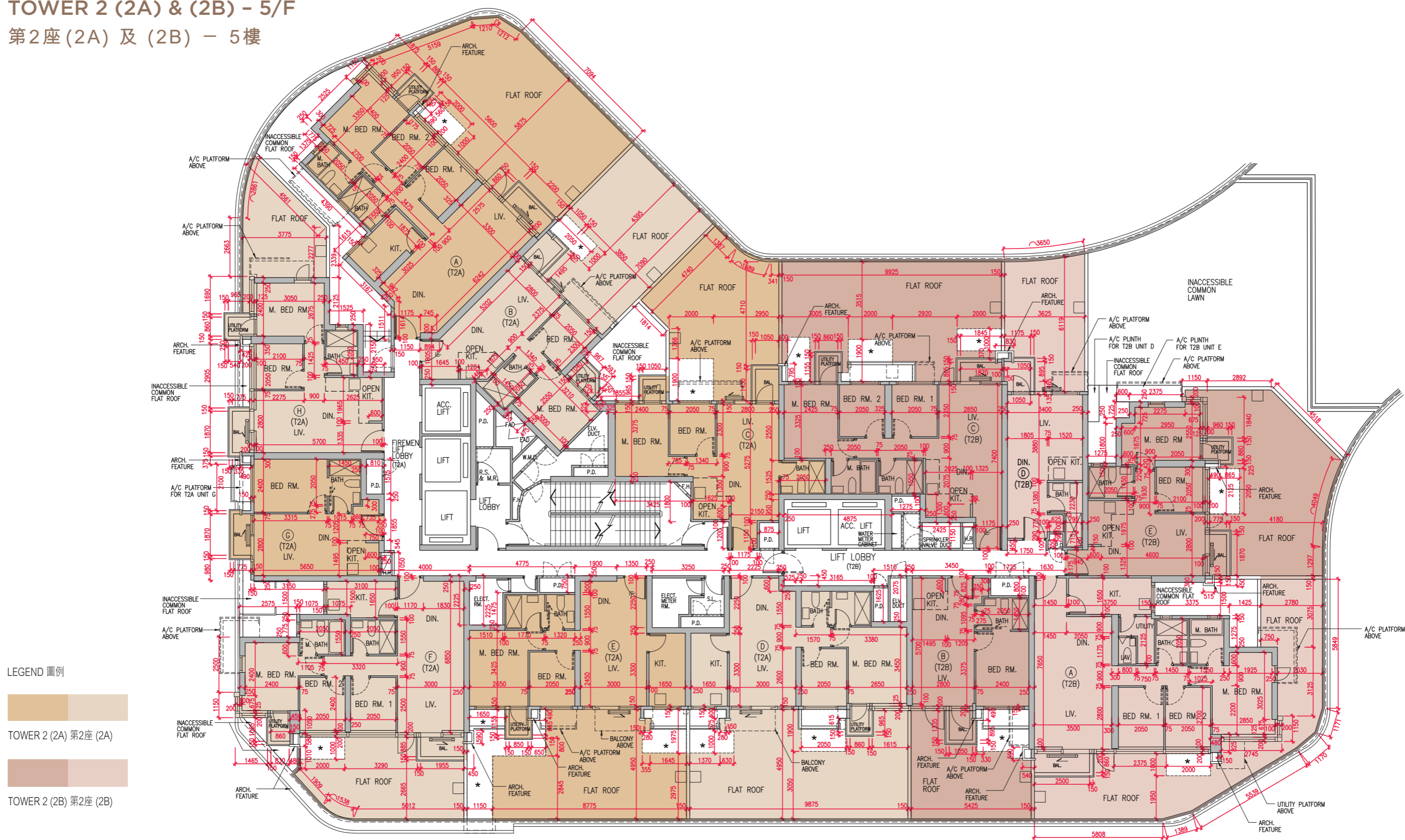
備註：

- 樓面平面圖之尺規所列數字為以毫米標示之建築結構尺寸，並以四捨五入至最接近整數。
- 有關噪音緩解措施之詳情，請參閱本售樓說明書的有關資料章節。
- 平面圖中顯示之名詞及簡稱之圖例請參閱本售樓說明書第24頁。
- 住宅樓層由5樓開始。每座不設13樓、14樓、24樓及34樓。

11

FLOOR PLANS OF RESIDENTIAL PROPERTIES IN THE PHASE 期數的住宅物業的樓面平面圖

TOWER 2 (2A) & (2B) - 5/F 第2座(2A)及(2B) - 5樓



	Tower 座數	Floor 樓層	Unit 單位								
			A	B	C	D	E	F	G	H	
The thickness of the floor slabs (excluding plaster) of each residential property (mm) 每個住宅物業的樓板(不包括灰泥)的厚度(毫米)	Tower 2 (2A) 第2座(2A)	5/F 5樓	150, 200	150, 175,	150	150, 175	150, 175	150, 175	150, 175	150, 175	
The floor-to-floor height (refers to height between the top surface of the structural slab of a floor and the top surface of the structural slab of its immediate upper floor) of each residential property (mm) 每個住宅物業的層與層之間的高度(指該樓層之石屎地台面與上一層石屎地台面之高度距離)(毫米)			3150	3150	3150	3150	3150	3150	3150	3150	
The thickness of the floor slabs (excluding plaster) of each residential property (mm) 每個住宅物業的樓板(不包括灰泥)的厚度(毫米)	Tower 2 (2B) 第2座(2B)		150	150, 175	150, 175	150	150, 175, 200				
The floor-to-floor height (refers to height between the top surface of the structural slab of a floor and the top surface of the structural slab of its immediate upper floor) of each residential property (mm) 每個住宅物業的層與層之間的高度(指該樓層之石屎地台面與上一層石屎地台面之高度距離)(毫米)			3150	3150	3150	3150	3150				

The internal areas of the residential properties on the upper floors will generally be slightly larger than those on the lower floors because of the reducing thickness of the structural walls on the upper floors.

因住宅物業的較高樓層的結構牆的厚度遞減，較高樓層的內部面積，一般比較低樓層的內部面積稍大。

Notes:

1. The dimensions in the floor plans are all structural dimensions in millimeters and rounded off to the nearest integer.
2. For details of the noise mitigation measures, please refer to the Relevant Information section in this sales brochure.
3. Please refer to Page 24 of this sales brochure for legend of the terms and abbreviations shown in the floor plan.
4. Residential floors start from 5/F. There are no 13/F, 14/F, 24/F and 34/F in each Tower.

備註：

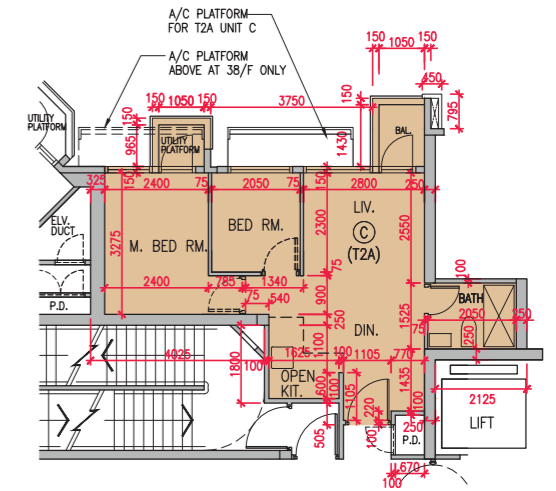
1. 樓面平面圖之尺規所列數字為以毫米標示之建築結構尺寸，並以四捨五入至最接近整數。
2. 有關噪音緩解措施之詳情，請參閱本售樓說明書的有關資料章節。
3. 平面圖中顯示之名詞及簡稱之圖例請參閱本售樓說明書第24頁。
4. 住宅樓層由5樓開始。每座不設13樓、14樓、24樓及34樓。

11

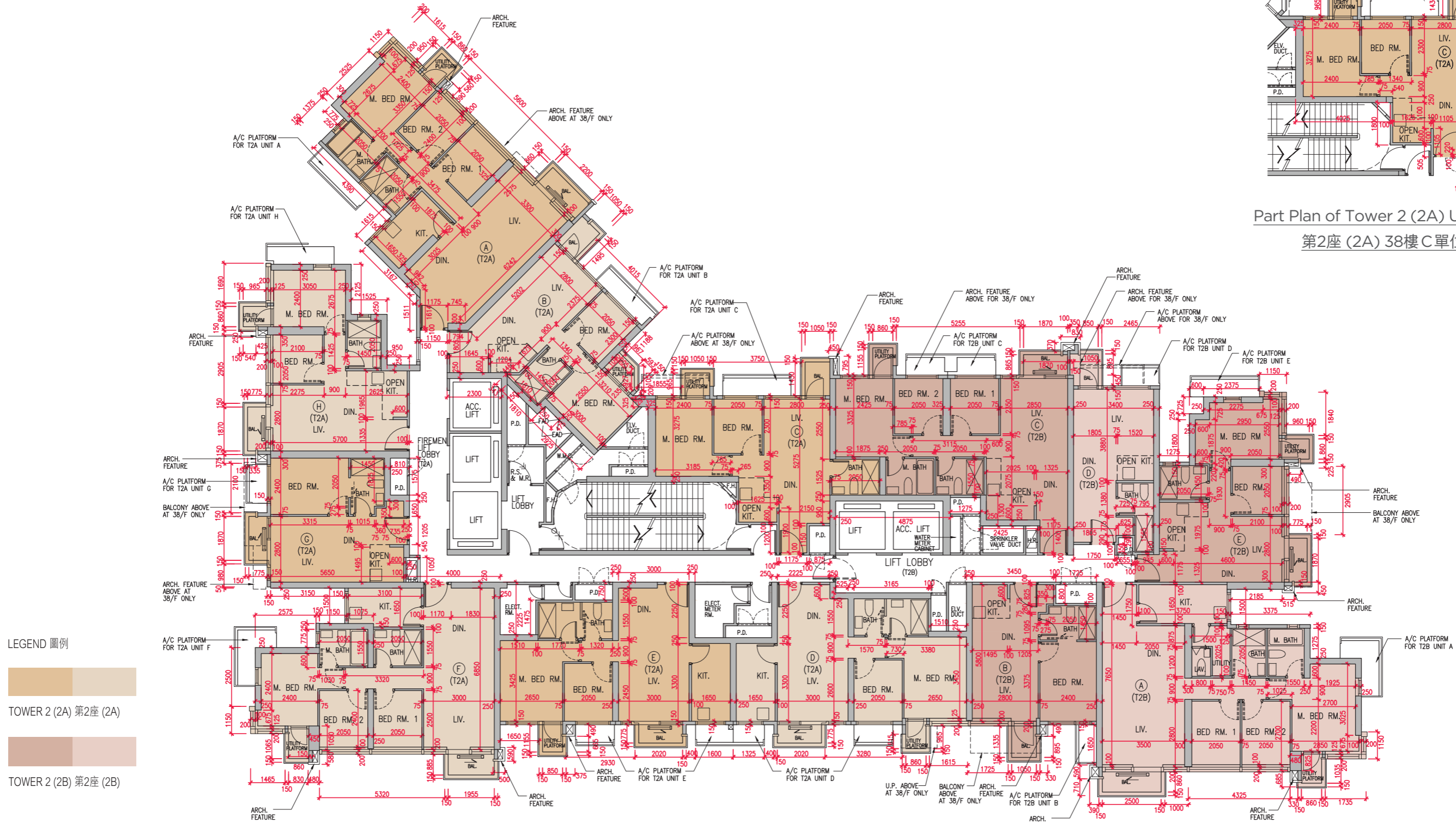
FLOOR PLANS OF RESIDENTIAL PROPERTIES IN THE PHASE 期數的住宅物業的樓面平面圖

TOWER 2 (2A) & (2B) - 6/F - 38/F (13/F, 14/F, 24/F & 34/F OMITTED)

第2座(2A)及(2B) - 6樓至38樓(不設13樓、14樓、24樓及34樓)

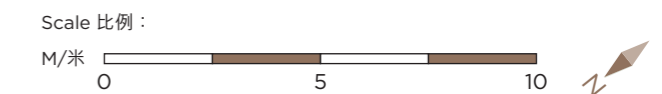


Part Plan of Tower 2 (2A) Unit C on 38/F
第2座(2A)38樓C單位部份圖



LEGEND 圖例

- TOWER 2 (2A) 第2座(2A)
- TOWER 2 (2B) 第2座(2B)



	Tower 座數	Floor 樓層	Unit 單位							
			A	B	C	D	E	F	G	H
The thickness of the floor slabs (excluding plaster) of each residential property (mm) 每個住宅物業的樓板(不包括灰泥)的厚度(毫米)	Tower 2 (2A) 第2座(2A)	6/F - 36/F 6樓至36樓	150, 200	150, 175	150	150, 175	150, 175	150, 175	150, 175	150, 175
The floor-to-floor height (refers to height between the top surface of the structural slab of a floor and the top surface of the structural slab of its immediate upper floor) of each residential property (mm) 每個住宅物業的層與層之間的高度(指該樓層之石屎地台面與上一層石屎地台面之高度距離)(毫米)			3150	3150	3150	3150	3150	3150	3150	3150
The thickness of the floor slabs (excluding plaster) of each residential property (mm) 每個住宅物業的樓板(不包括灰泥)的厚度(毫米)	Tower 2 (2A) 第2座(2A)	37/F 37樓	150, 200	150, 175	150	150, 175	150, 175	150, 175	150, 175	150, 175
The floor-to-floor height (refers to height between the top surface of the structural slab of a floor and the top surface of the structural slab of its immediate upper floor) of each residential property (mm) 每個住宅物業的層與層之間的高度(指該樓層之石屎地台面與上一層石屎地台面之高度距離)(毫米)			3150	3150	2850, 3150	3150	3150	3150	3150	3150
The thickness of the floor slabs (excluding plaster) of each residential property (mm) 每個住宅物業的樓板(不包括灰泥)的厚度(毫米)	Tower 2 (2B) 第2座(2B)	6/F - 37/F 6樓至37樓	150	150, 175	150, 175	150	150, 175, 200			
The floor-to-floor height (refers to height between the top surface of the structural slab of a floor and the top surface of the structural slab of its immediate upper floor) of each residential property (mm) 每個住宅物業的層與層之間的高度(指該樓層之石屎地台面與上一層石屎地台面之高度距離)(毫米)			3150	3150	3150	3150	3150			

The internal areas of the residential properties on the upper floors will generally be slightly larger than those on the lower floors because of the reducing thickness of the structural walls on the upper floors.

因住宅物業的較高樓層的結構牆的厚度遞減，較高樓層的內部面積，一般比較低樓層的內部面積稍大。

Notes:

- The dimensions in the floor plans are all structural dimensions in millimeters and rounded off to the nearest integer.
- For details of the noise mitigation measures, please refer to the Relevant Information section in this sales brochure.
- Please refer to Page 24 of this sales brochure for legend of the terms and abbreviations shown in the floor plan.
- Residential floors start from 5/F. There are no 13/F, 14/F, 24/F and 34/F in each Tower.

備註：

- 樓面平面圖之尺規所列數字為以毫米標示之建築結構尺寸，並以四捨五入至最接近整數。
- 有關噪音緩解措施之詳情，請參閱本售樓說明書的有關資料章節。
- 平面圖中顯示之名詞及簡稱之圖例請參閱本售樓說明書第24頁。
- 住宅樓層由5樓開始。每座不設13樓、14樓、24樓及34樓。

11

FLOOR PLANS OF RESIDENTIAL PROPERTIES IN THE PHASE 期數的住宅物業的樓面平面圖

	Tower 座數	Floor 樓層	Unit 單位								
			A	B	C	D	E	F	G	H	
The thickness of the floor slabs (excluding plaster) of each residential property (mm) 每個住宅物業的樓板(不包括灰泥)的厚度(毫米)	Tower 2 (2A) 第2座(2A)	38/F 38樓	150, 200	150, 175	150, 175	150, 175	150, 175	150, 175	150, 175	150, 175	
The floor-to-floor height (refers to height between the top surface of the structural slab of a floor and the top surface of the structural slab of its immediate upper floor) of each residential property (mm) 每個住宅物業的層與層之間的高度(指該樓層之石屎地台面與上一層石屎地台面之高度距離)(毫米)			3110, 3160, 3185, 3210, 3360, 3400, 3460, 3520, 3760	3220, 3400, 3460, 3510, 3520, 3750, 3810	3110, 3160, 3325, 3400, 3460, 3810	3110, 3325, 3400, 3460, 3525, 3760	3460	3460	3160, 3460, 3520, 3760, 3810	3110, 3160, 3335, 3400, 3460, 3520, 3685, 3810	
The thickness of the floor slabs (excluding plaster) of each residential property (mm) 每個住宅物業的樓板(不包括灰泥)的厚度(毫米)	Tower 2 (2B) 第2座(2B)	38/F 38樓	150, 200	150, 175	150, 175	150	150, 175, 200				
The floor-to-floor height (refers to height between the top surface of the structural slab of a floor and the top surface of the structural slab of its immediate upper floor) of each residential property (mm) 每個住宅物業的層與層之間的高度(指該樓層之石屎地台面與上一層石屎地台面之高度距離)(毫米)			3120, 3160, 3185, 3335, 3360, 3400, 3410, 3460, 3525, 3700, 3750, 3760, 3810	3160, 3220, 3460, 3510, 3520, 3760, 3810	3160, 3210, 3260, 3460, 3520, 3585, 3760, 3810	3160, 3460, 3520, 3710, 3810	3210, 3460, 3510, 3760				

The internal areas of the residential properties on the upper floors will generally be slightly larger than those on the lower floors because of the reducing thickness of the structural walls on the upper floors.

因住宅物業的較高樓層的結構牆的厚度遞減，較高樓層的內部面積，一般比較低樓層的內部面積稍大。

Notes:

- The dimensions in the floor plans are all structural dimensions in millimeters and rounded off to the nearest integer.
- For details of the noise mitigation measures, please refer to the Relevant Information section in this sales brochure.
- Please refer to Page 24 of this sales brochure for legend of the terms and abbreviations shown in the floor plan.
- Residential floors start from 5/F. There are no 13/F, 14/F, 24/F and 34/F in each Tower.

備註：

- 樓面平面圖之尺規所列數字為以毫米標示之建築結構尺寸，並以四捨五入至最接近整數。
- 有關噪音緩解措施之詳情，請參閱本售樓說明書的有關資料章節。
- 平面圖中顯示之名詞及簡稱之圖例請參閱本售樓說明書第24頁。
- 住宅樓層由5樓開始。每座不設13樓、14樓、24樓及34樓。

This page intentionally left blank.

此頁特意留為空白。

	Tower 座數	Floor 樓層	Unit 單位			
			A	B	C	D
The thickness of the floor slabs (excluding plaster) of each residential property (mm) 每個住宅物業的樓板(不包括灰泥)的厚度(毫米)	Tower 2 (2A) 第2座(2A)	39/F 39樓	150, 175, 200	150, 175	150, 175	150, 175
The floor-to-floor height (refers to height between the top surface of the structural slab of a floor and the top surface of the structural slab of its immediate upper floor) of each residential property (mm) 每個住宅物業的層與層之間的高度(指該樓層之石屎地台面與上一層石屎地台面之高度距離)(毫米)			3460	3460	3460	3460
The thickness of the floor slabs (excluding plaster) of each residential property (mm) 每個住宅物業的樓板(不包括灰泥)的厚度(毫米)	Tower 2 (2B) 第2座(2B)		150, 175, 225	150, 175, 225	150, 175	
The floor-to-floor height (refers to height between the top surface of the structural slab of a floor and the top surface of the structural slab of its immediate upper floor) of each residential property (mm) 每個住宅物業的層與層之間的高度(指該樓層之石屎地台面與上一層石屎地台面之高度距離)(毫米)			3460	3460	3460	

The internal areas of the residential properties on the upper floors will generally be slightly larger than those on the lower floors because of the reducing thickness of the structural walls on the upper floors.

因住宅物業的較高樓層的結構牆的厚度遞減，較高樓層的內部面積，一般比較低樓層的內部面積稍大。

Notes:

- The dimensions in the floor plans are all structural dimensions in millimeters and rounded off to the nearest integer.
- For details of the noise mitigation measures, please refer to the Relevant Information section in this sales brochure.
- Please refer to Page 24 of this sales brochure for legend of the terms and abbreviations shown in the floor plan.
- Residential floors start from 5/F. There are no 13/F, 14/F, 24/F and 34/F in each Tower.

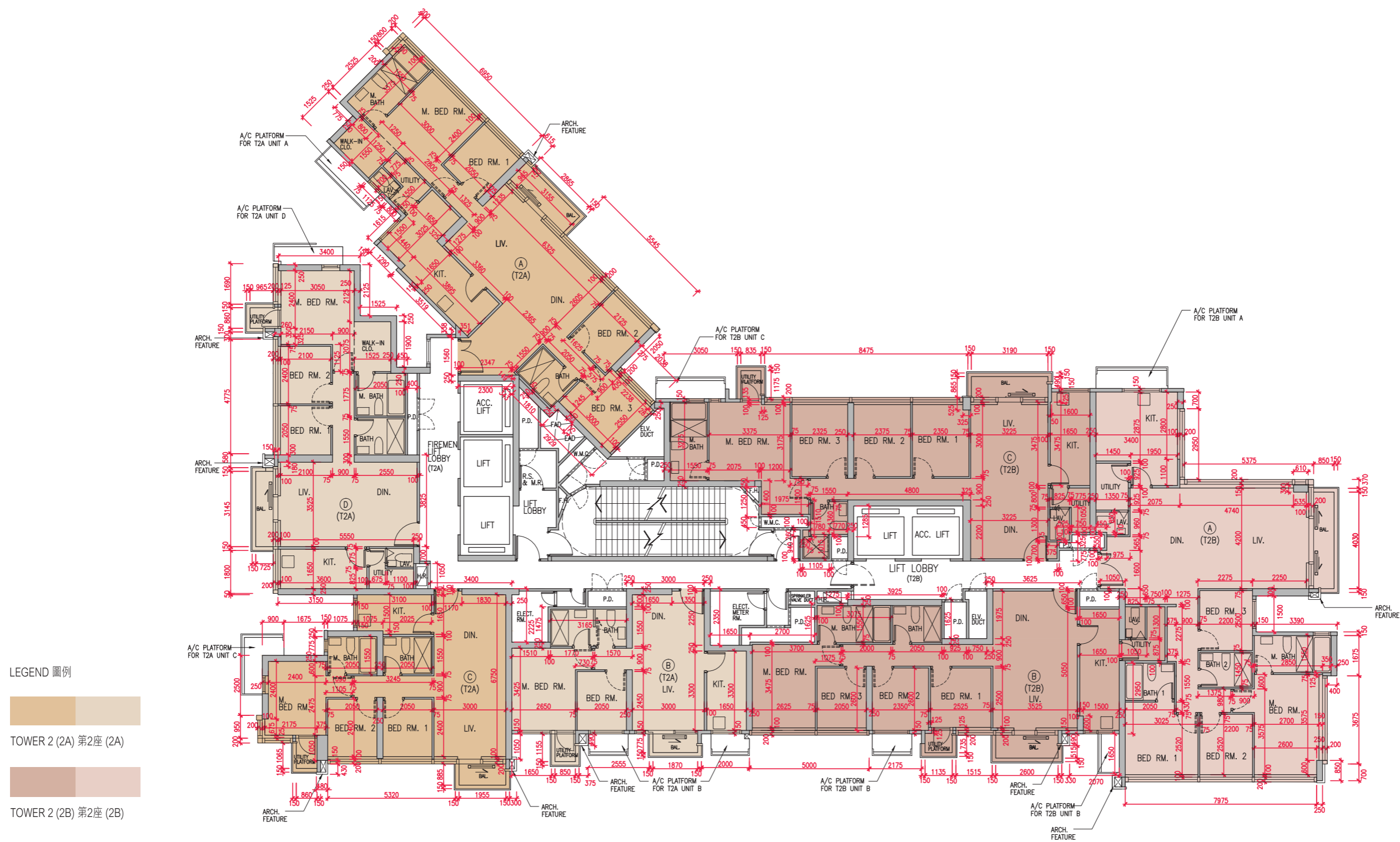
備註：

- 樓面平面圖之尺規所列數字為以毫米標示之建築結構尺寸，並以四捨五入至最接近整數。
- 有關噪音緩解措施之詳情，請參閱本售樓說明書的有關資料章節。
- 平面圖中顯示之名詞及簡稱之圖例請參閱本售樓說明書第24頁。
- 住宅樓層由5樓開始。每座不設13樓、14樓、24樓及34樓。

11

FLOOR PLANS OF RESIDENTIAL PROPERTIES IN THE PHASE 期數的住宅物業的樓面平面圖

TOWER 2 (2A) & (2B) - 40/F - 41/F 第2座(2A)及(2B) - 40樓至41樓



Scale 比例 :



	Tower 座數	Floor 樓層	Unit 單位			
			A	B	C	D
The thickness of the floor slabs (excluding plaster) of each residential property (mm) 每個住宅物業的樓板(不包括灰泥)的厚度(毫米)	Tower 2 (2A) 第2座(2A)	40/F 40樓	150, 175, 200	150, 175	150, 175	150, 175
The floor-to-floor height (refers to height between the top surface of the structural slab of a floor and the top surface of the structural slab of its immediate upper floor) of each residential property (mm) 每個住宅物業的層與層之間的高度(指該樓層之石屎地台面與上一層石屎地台面之高度距離)(毫米)			3460	3460	3460	3460
The thickness of the floor slabs (excluding plaster) of each residential property (mm) 每個住宅物業的樓板(不包括灰泥)的厚度(毫米)	Tower 2 (2B) 第2座(2B)	40/F 40樓	150, 175, 225	150, 175, 225	150, 175	
The floor-to-floor height (refers to height between the top surface of the structural slab of a floor and the top surface of the structural slab of its immediate upper floor) of each residential property (mm) 每個住宅物業的層與層之間的高度(指該樓層之石屎地台面與上一層石屎地台面之高度距離)(毫米)			3460	3460	3460	
The thickness of the floor slabs (excluding plaster) of each residential property (mm) 每個住宅物業的樓板(不包括灰泥)的厚度(毫米)	Tower 2 (2A) 第2座(2A)	41/F 41樓	150, 175, 200	150, 175	150, 175	150, 175
The floor-to-floor height (refers to height between the top surface of the structural slab of a floor and the top surface of the structural slab of its immediate upper floor) of each residential property (mm) 每個住宅物業的層與層之間的高度(指該樓層之石屎地台面與上一層石屎地台面之高度距離)(毫米)			3460	3460	3460	3460
The thickness of the floor slabs (excluding plaster) of each residential property (mm) 每個住宅物業的樓板(不包括灰泥)的厚度(毫米)	Tower 2 (2B) 第2座(2B)	41/F 41樓	150, 175	150, 175	150, 175, 200	
The floor-to-floor height (refers to height between the top surface of the structural slab of a floor and the top surface of the structural slab of its immediate upper floor) of each residential property (mm) 每個住宅物業的層與層之間的高度(指該樓層之石屎地台面與上一層石屎地台面之高度距離)(毫米)			3460	3460	3460	

The internal areas of the residential properties on the upper floors will generally be slightly larger than those on the lower floors because of the reducing thickness of the structural walls on the upper floors.

因住宅物業的較高樓層的結構牆的厚度遞減，較高樓層的內部面積，一般比較低樓層的內部面積稍大。

Notes:

- The dimensions in the floor plans are all structural dimensions in millimeters and rounded off to the nearest integer.
- For details of the noise mitigation measures, please refer to the Relevant Information section in this sales brochure.
- Please refer to Page 24 of this sales brochure for legend of the terms and abbreviations shown in the floor plan.
- Residential floors start from 5/F. There are no 13/F, 14/F, 24/F and 34/F in each Tower.

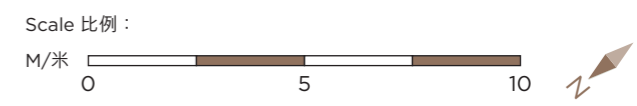
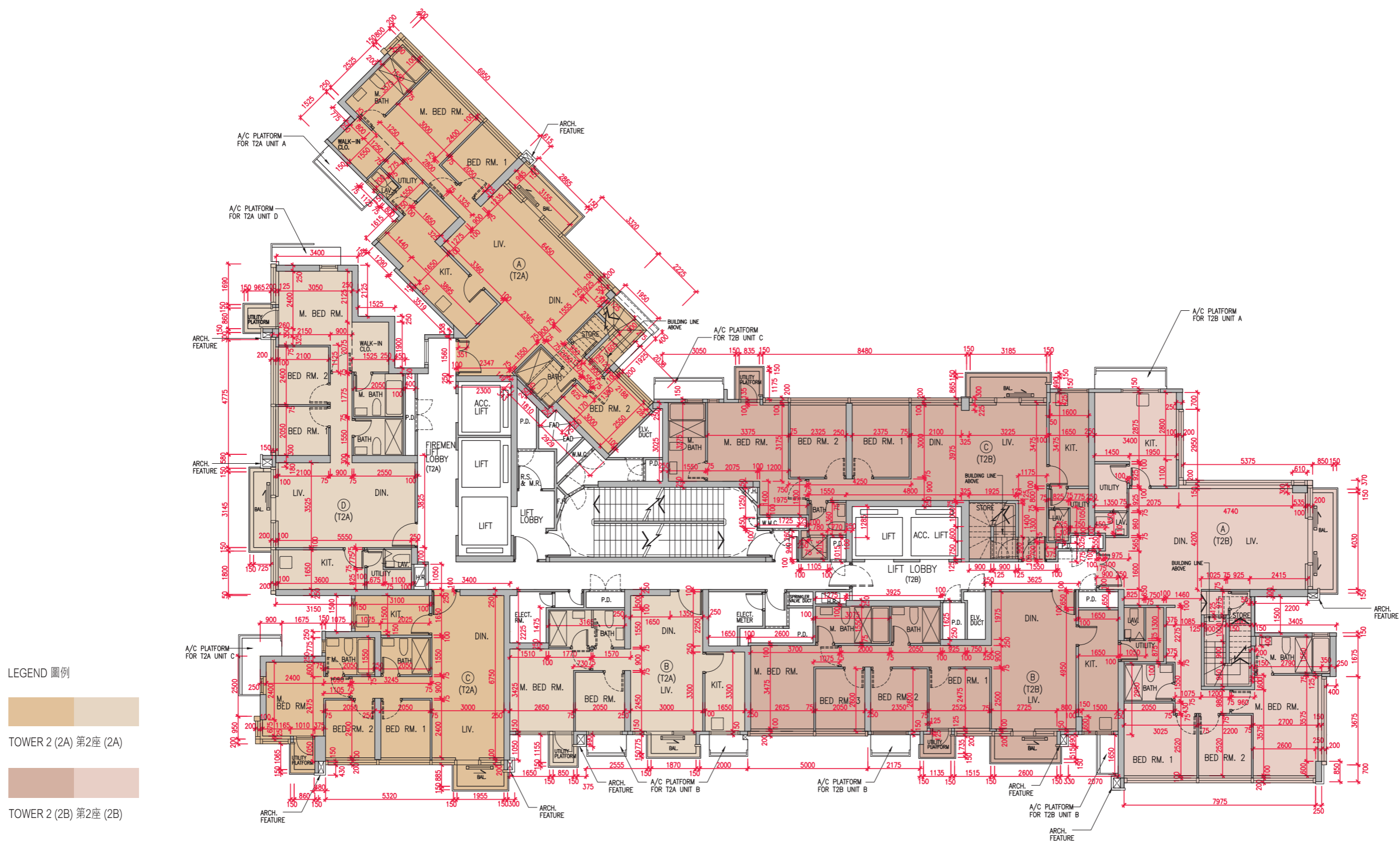
備註：

- 樓面平面圖之尺規所列數字為以毫米標示之建築結構尺寸，並以四捨五入至最接近整數。
- 有關噪音緩解措施之詳情，請參閱本售樓說明書的有關資料章節。
- 平面圖中顯示之名詞及簡稱之圖例請參閱本售樓說明書第24頁。
- 住宅樓層由5樓開始。每座不設13樓、14樓、24樓及34樓。

11

FLOOR PLANS OF RESIDENTIAL PROPERTIES IN THE PHASE 期數的住宅物業的樓面平面圖

TOWER 2 (2A) & (2B) - 42/F 第2座(2A)及(2B) - 42樓



	Tower 座數	Floor 樓層	Unit 單位			
			A	B	C	D
The thickness of the floor slabs (excluding plaster) of each residential property (mm) 每個住宅物業的樓板(不包括灰泥)的厚度(毫米)	Tower 2 (2A) 第2座(2A)	42/F 42樓	200	200	200	200
The floor-to-floor height (refers to height between the top surface of the structural slab of a floor and the top surface of the structural slab of its immediate upper floor) of each residential property (mm) 每個住宅物業的層與層之間的高度(指該樓層之石屎地台面與上一層石屎地台面之高度距離)(毫米)			3460	3460	3460	3460
The thickness of the floor slabs (excluding plaster) of each residential property (mm) 每個住宅物業的樓板(不包括灰泥)的厚度(毫米)	Tower 2 (2B) 第2座(2B)		200	200	200	
The floor-to-floor height (refers to height between the top surface of the structural slab of a floor and the top surface of the structural slab of its immediate upper floor) of each residential property (mm) 每個住宅物業的層與層之間的高度(指該樓層之石屎地台面與上一層石屎地台面之高度距離)(毫米)			3460	3460	3460	

The internal areas of the residential properties on the upper floors will generally be slightly larger than those on the lower floors because of the reducing thickness of the structural walls on the upper floors.

因住宅物業的較高樓層的結構牆的厚度遞減，較高樓層的內部面積，一般比較低樓層的內部面積稍大。

Notes:

- The dimensions in the floor plans are all structural dimensions in millimeters and rounded off to the nearest integer.
- For details of the noise mitigation measures, please refer to the Relevant Information section in this sales brochure.
- Please refer to Page 24 of this sales brochure for legend of the terms and abbreviations shown in the floor plan.
- Residential floors start from 5/F. There are no 13/F, 14/F, 24/F and 34/F in each Tower.

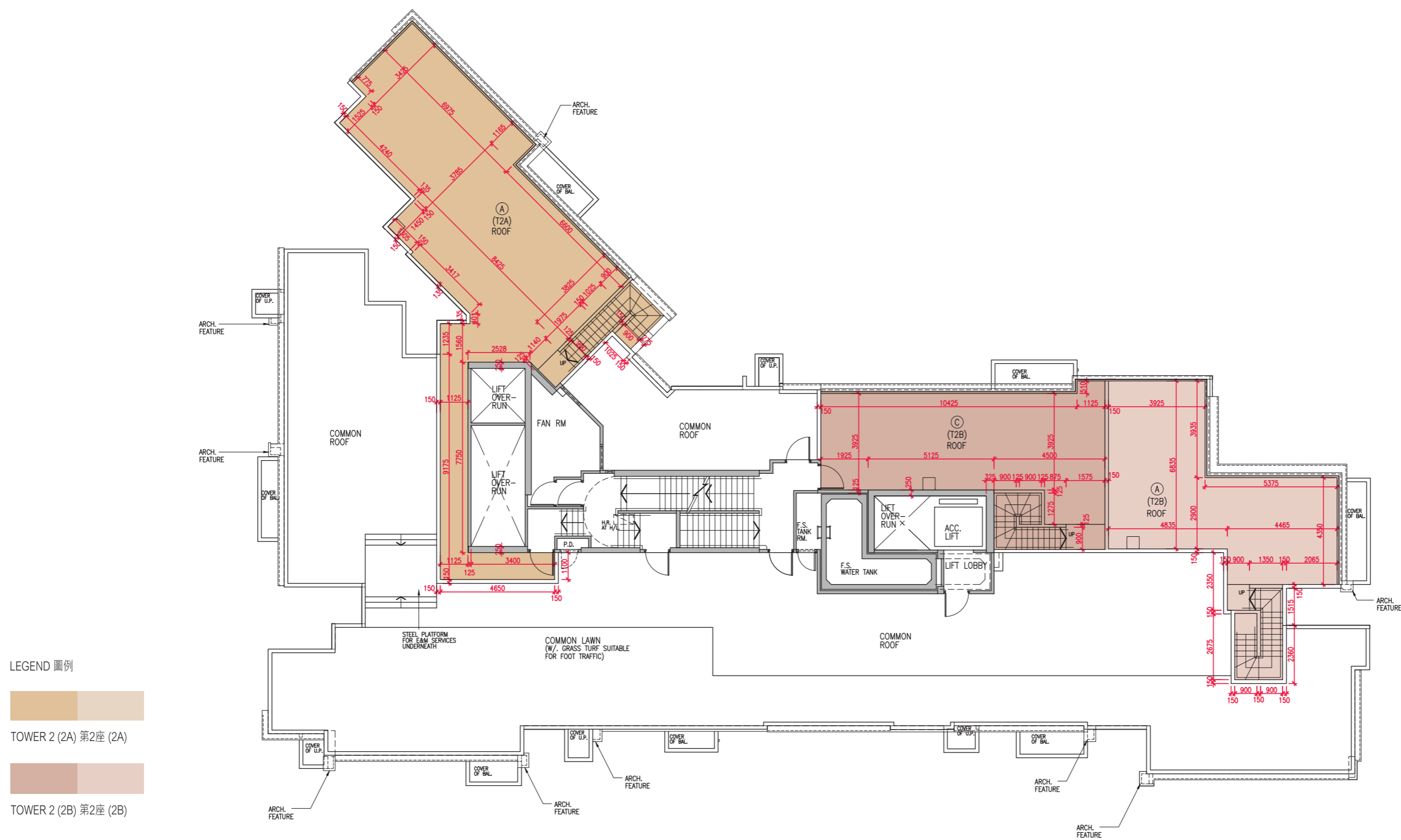
備註：

- 樓面平面圖之尺規所列數字為以毫米標示之建築結構尺寸，並以四捨五入至最接近整數。
- 有關噪音緩解措施之詳情，請參閱本售樓說明書的有關資料章節。
- 平面圖中顯示之名詞及簡稱之圖例請參閱本售樓說明書第24頁。
- 住宅樓層由5樓開始。每座不設13樓、14樓、24樓及34樓。

11

FLOOR PLANS OF RESIDENTIAL PROPERTIES IN THE PHASE 期數的住宅物業的樓面平面圖

TOWER 2 (2A) & (2B) - ROOF 第2座(2A)及(2B) - 天台



Scale 比例 :



	Tower 座數	Floor 樓層	Unit 單位			
			A	B	C	D
The thickness of the floor slabs (excluding plaster) of each residential property (mm) 每個住宅物業的樓板(不包括灰泥)的厚度(毫米)	Tower 2 (2A) 第2座(2A)	Roof 天台	Not applicable 不適用	Not applicable 不適用	Not applicable 不適用	Not applicable 不適用
The floor-to-floor height (refers to height between the top surface of the structural slab of a floor and the top surface of the structural slab of its immediate upper floor) of each residential property (mm) 每個住宅物業的層與層之間的高度(指該樓層之石屎地台面與上一層石屎地台面之高度距離)(毫米)			Not applicable 不適用	Not applicable 不適用	Not applicable 不適用	Not applicable 不適用
The thickness of the floor slabs (excluding plaster) of each residential property (mm) 每個住宅物業的樓板(不包括灰泥)的厚度(毫米)	Tower 2 (2B) 第2座(2B)		Not applicable 不適用	Not applicable 不適用	Not applicable 不適用	Not applicable 不適用
The floor-to-floor height (refers to height between the top surface of the structural slab of a floor and the top surface of the structural slab of its immediate upper floor) of each residential property (mm) 每個住宅物業的層與層之間的高度(指該樓層之石屎地台面與上一層石屎地台面之高度距離)(毫米)			Not applicable 不適用	Not applicable 不適用	Not applicable 不適用	Not applicable 不適用

The internal areas of the residential properties on the upper floors will generally be slightly larger than those on the lower floors because of the reducing thickness of the structural walls on the upper floors.

因住宅物業的較高樓層的結構牆的厚度遞減，較高樓層的內部面積，一般比較低樓層的內部面積稍大。

Notes:

- The dimensions in the floor plans are all structural dimensions in millimeters and rounded off to the nearest integer.
- For details of the noise mitigation measures, please refer to the Relevant Information section in this sales brochure.
- Please refer to Page 24 of this sales brochure for legend of the terms and abbreviations shown in the floor plan.
- Residential floors start from 5/F. There are no 13/F, 14/F, 24/F and 34/F in each Tower.

備註：

- 樓面平面圖之尺規所列數字為以毫米標示之建築結構尺寸，並以四捨五入至最接近整數。
- 有關噪音緩解措施之詳情，請參閱本售樓說明書的有關資料章節。
- 平面圖中顯示之名詞及簡稱之圖例請參閱本售樓說明書第24頁。
- 住宅樓層由5樓開始。每座不設13樓、14樓、24樓及34樓。