



HENDERSON LEASING AGENCY LIMITED

恒基租務代理有限公司

牌照號碼 License No: C-000835

恒基地產有限公司全資附屬公司 A wholly-owned subsidiary of Henderson Land Development Co. Ltd.

As of August 2023

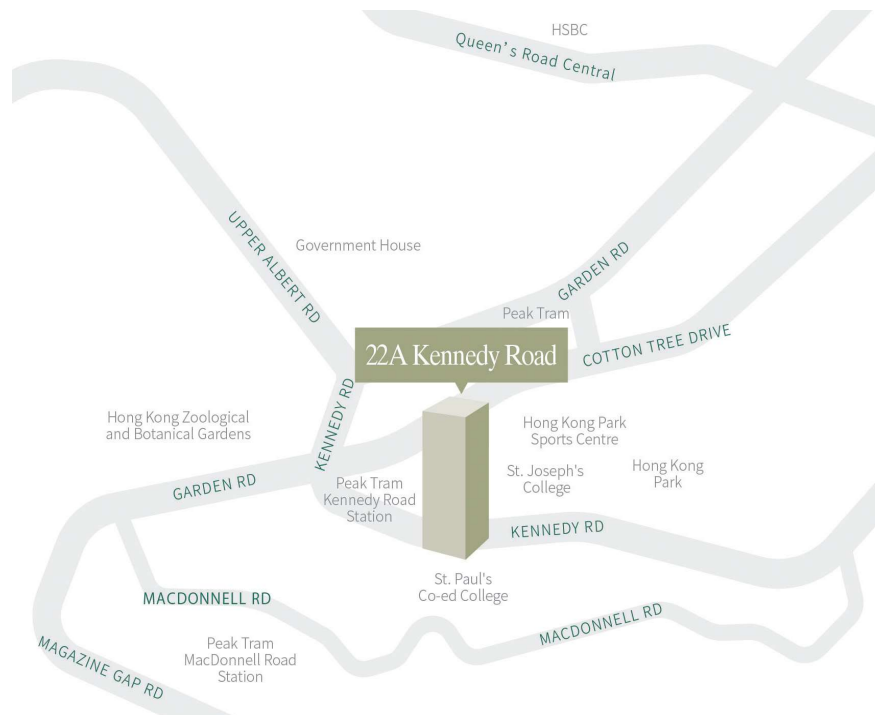
# 22A Kennedy Road New Residential Development For Lease

(Subject to contract and availability)



### Building features:

- Prestige and new luxurious residential building in Mid-levels Central
- Proximity to the Central business hub
- The Hong Kong Zoological and Botanical Gardens and Hong Kong Park are in the vicinity
- Clubhouse facilities include a gymnasium, outdoor playground and function room

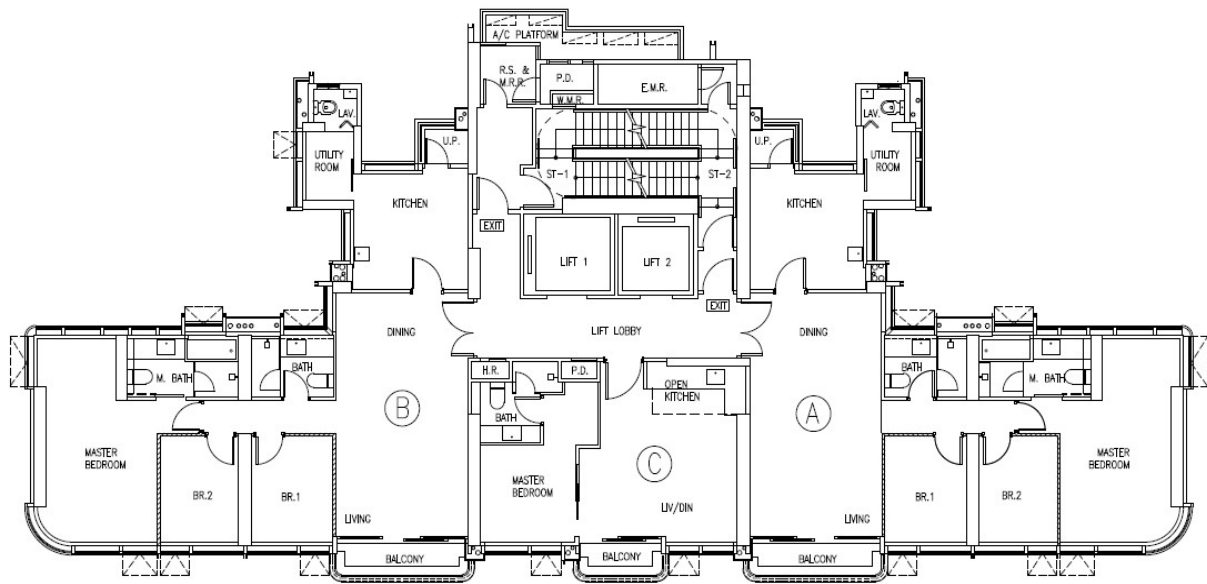


Disclaimer: The information herein is for reference only and subject to change and does not form part of an offer or contract. No warranty or representation is given as to its accuracy, completeness or correctness. The Landlord or its representative shall not be held responsible for any responsibility or liability from any actions arising from or in reliance upon the whole or any part thereof.



**Subject to Contract and Availability of Premises**

Premises	Layout	Saleable Area (s.f.)	Asking Monthly Rent
Flat B, 15/F	3-bedroom	1,083'S	Negotiable
Flat A, 16/F	3-bedroom	1,091'S	
Flat B, 16/F	3-bedroom	1,083'S	



**15F-16F Floor Plan**

Not to Scale

For Identification Purpose Only

Leasing Enquiry/ Viewing	
Ms. Annie Tang	Ms. Karena Cheung
☎ 2908 8743/ 6276 0336	☎ 2908 8206/ 9107 6370
✉ annie.tang@hld.com	✉ karena.cheung@hld.com

Disclaimer: The information herein is for reference only and subject to change and does not form part of an offer or contract. No warranty or representation is given as to its accuracy, completeness or correctness. The Landlord or its representative shall not be held responsible for any responsibility or liability from any actions arising from or in reliance upon the whole or any part thereof.