

11 發展項目的住宅物業的樓面平面圖 FLOOR PLANS OF RESIDENTIAL PROPERTIES IN THE DEVELOPMENT

在本頁上備註和圖例適用於全部的「發展項目的住宅物業的樓面平面圖」頁面。

樓面平面圖圖例 Legends of the Floor Plans

A.D.	=	風管槽 Air Duct
ARCH. FEATURE	=	建築裝飾 Architectural Feature
ARCH. FEATURE ABOVE	=	上層建築裝飾 Architectural Feature Above
A/C PLATFORM	=	空調機平台 Air-conditioner Platform
A/C UNIT FOR FLAT _ / PENTHOUSE _	=	_ 單位 / 頂層單位 _ 空調機 Air-conditioner Unit For Flat_ / Penthouse_
BAL.	=	露台 Balcony
BATH	=	浴室 Bathroom
BATH 1	=	浴室 1 Bathroom 1
BATH 2	=	浴室 2 Bathroom 2
B.R.1 / BED 1	=	睡房 1 Bedroom 1
B.R.2	=	睡房 2 Bedroom 2
BAL. ABOVE	=	上層位置為露台 Balcony Above
C.D.	=	電線槽 Cable Duct
CONS.	=	溫室 Conservatory
DIN.	=	飯廳 Dining Room
DN	=	落 Down
E.M.R.	=	電錶房 Electric Meter Room
ELE. RM.	=	電力機房 Electric Machine Room

備註：

1. 露台及工作平台為不可封閉的地方。
2. 部份單位的內部天花板高度可能會因結構、建築及 / 或裝修設計的變化而有所不同。
3. 住宅單位有幕牆。住宅單位的實用面積已包括圍封住宅單位的幕牆的面積，從幕牆的外部開始量度。
4. 部份住宅物業的露台、工作平台、平台、天台或外牆設有外露之公用喉管，或外牆飾板內藏之公用喉管。
5. 部份住宅物業內之部分天花或有跌級樓板，用以安裝上層之機電設備或配合上層之結構、建築設計及 / 或裝修設計上的需要。
6. 部份住宅物業內或設有假陣或假天花用以安裝冷氣喉管及 / 或其他機電設備。
7. 各住宅物業的樓面平面圖內所展示之裝置及設備的圖標如浴缸、洗面盆、座廁、淋浴間、洗滌盆、櫃（如有）等乃根據最新經批准的建築圖則擬備，其形狀、尺寸、比例或與實際提供的裝置及設備存在差異，僅供示意及參考之用。

The notes and legends on this page apply to all pages of "Floor Plans of Residential Properties in the Development".

ELE DUCT	=	電線管道 Electric Duct
E.H.	=	門廊 Entrance Hall
F.S. DUCT	=	消防管道 Fire Services Duct
H.R. AT H/L	=	消防喉轆在高位 Hose Reel at High Level
H.R.	=	消防喉轆 Hose Reel
KIT.	=	廚房 Kitchen
LIV.	=	客廳 Living Room
LAV.	=	洗手間 Lavatory
M.B.R.	=	主人房 Master Bedroom
M.BATH	=	主人浴室 Master Bathroom
OPEN KIT.	=	開放式廚房 Open Kitchen
P.D.	=	管道 Pipe Duct
R.S.M.R.R	=	垃圾及物料回收房 Refuse Storage And Material Recovery Room
T.R.S.	=	臨時庇護處 Temporary Refuge Space
U.P.	=	工作平台 Utility Platform
UT.	=	工作間 Utility Room
U.P. ABOVE	=	上層位置為工作平台 Utility Platform Above
W.M.C.	=	水錶櫃 Water Meter Cabinet
W.F.B.	=	花槽 Window Flower Box

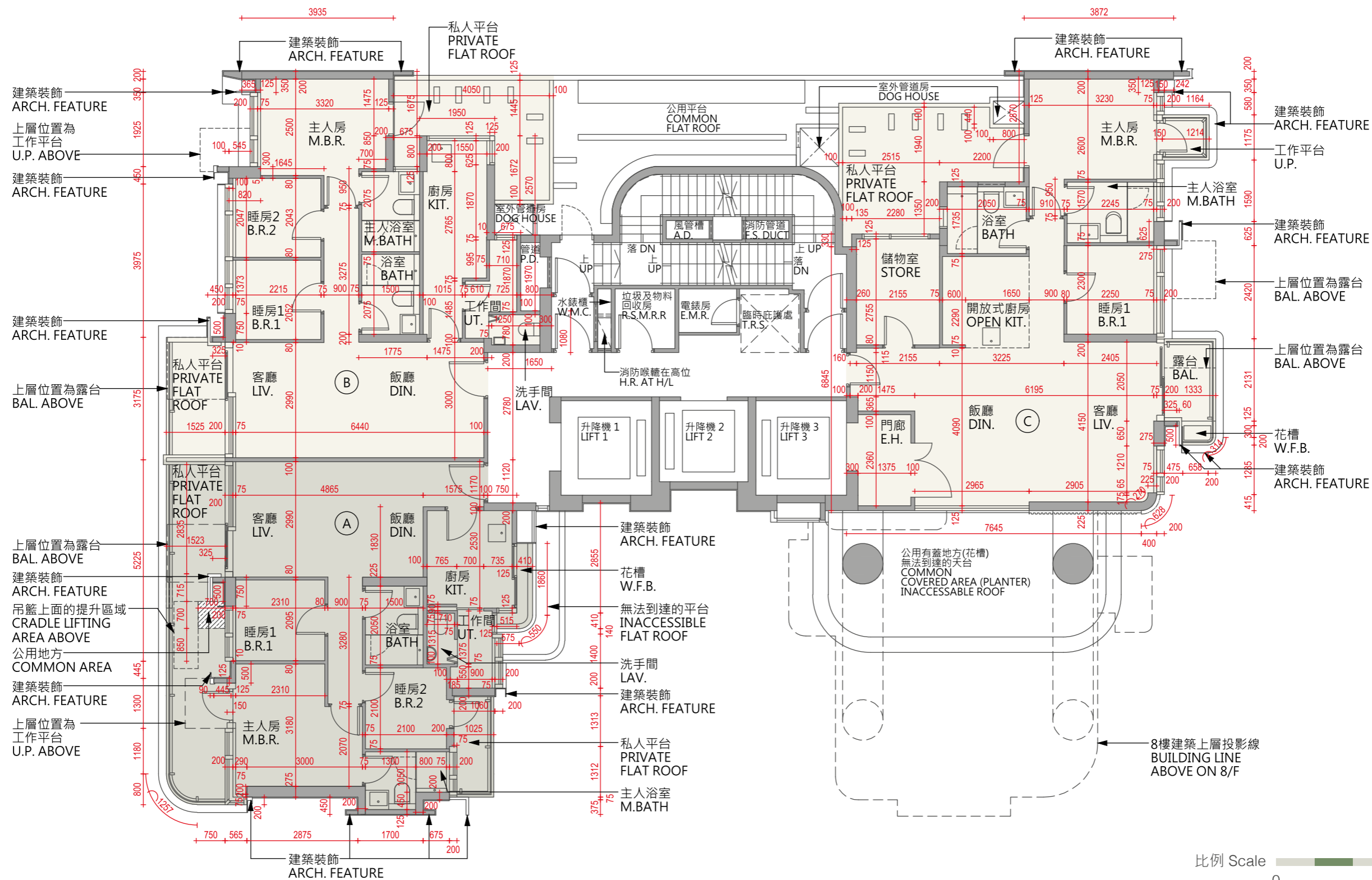
Notes:

1. Balconies and utility platforms are non-enclosed areas.
2. The internal ceiling height within some units may vary due to structural, architectural and/or decoration design variations.
3. There are curtain walls in the residential properties. The saleable area of a residential property has included the area of curtain walls enclosing the residential properties, and is measured from the exterior of such curtain walls.
4. Common pipes exposed or enclosed in cladding may be located at the balcony, utility platform, flat roof, roof or external wall of some residential properties.
5. There may be sunken slabs at some parts of the ceiling inside some residential properties for the installation of mechanical and electrical services of the floor above or due to the structural, architectural and/or decoration design requirements of the floor above.
6. There may be ceiling bulkheads or false ceiling inside some residential properties for the installation of air-conditioning conduits and/or other mechanical and electrical services.
7. Those icons of fittings and appliances shown on the floor plans of residential properties like bathtubs, washbasins, water closets, shower cubicles, sink units, cabinets (if any) etc. are prepared in accordance with the latest approved building plans. Their shapes, dimensions, scales may be differed from the fittings and appliances actually provided and they are for indication and reference only.



11 發展項目的住宅物業的樓面平面圖 FLOOR PLANS OF RESIDENTIAL PROPERTIES IN THE DEVELOPMENT

3樓
3/F



備註：

1. 平面圖所列的數字為毫米標示之建築結構尺寸，並以四捨五入至整數。
2. 不設4樓、13樓及14樓。
3. 請參閱本售樓說明書第21頁為住宅物業樓面圖而設之備註和圖例。

Notes:

1. The dimensions in floor plans are all structural dimensions in millimeter and rounded off to nearest integer.
2. 4/F, 13/F, and 14/F are omitted.
3. Please refer to page 21 of this sales brochure for the notes and legends of the terms and abbreviations for the floor plans of residential properties.

11 發展項目的住宅物業的樓面平面圖

FLOOR PLANS OF RESIDENTIAL PROPERTIES IN THE DEVELOPMENT

每個住宅物業 Eash Residential Property	樓層 Floor	單位 Unit		
		A	B	C
每個住宅物業的樓板（不包括灰泥）的厚度（毫米） Thickness of Floor Slab (excluding plaster) of each residential property (mm)	3 樓 3/F	100, 130, 150, 180	100, 150, 180	100, 150, 180
每個住宅物業的層與層之間的高度（指該樓層之石屎地台面與上一層石屎地台面之高度距離）（米） The floor-to-floor height (refers to the height between the top surface of the structural slab of a floor and the top surface of the structural slab of its immediate upper floor) of each residential property (m)		3150, 3450, 3500	3150, 3450, 3500	3150, 3450, 3500

因住宅物業的較高樓層的結構牆的厚度遞減，較高樓層的內部面積，一般比較低樓層的內部面積稍大。

備註：

1. 不設 4 樓、13 樓及 14 樓。
2. 請參閱本售樓說明書第 21 頁為住宅物業樓面圖而設之備注和圖例。

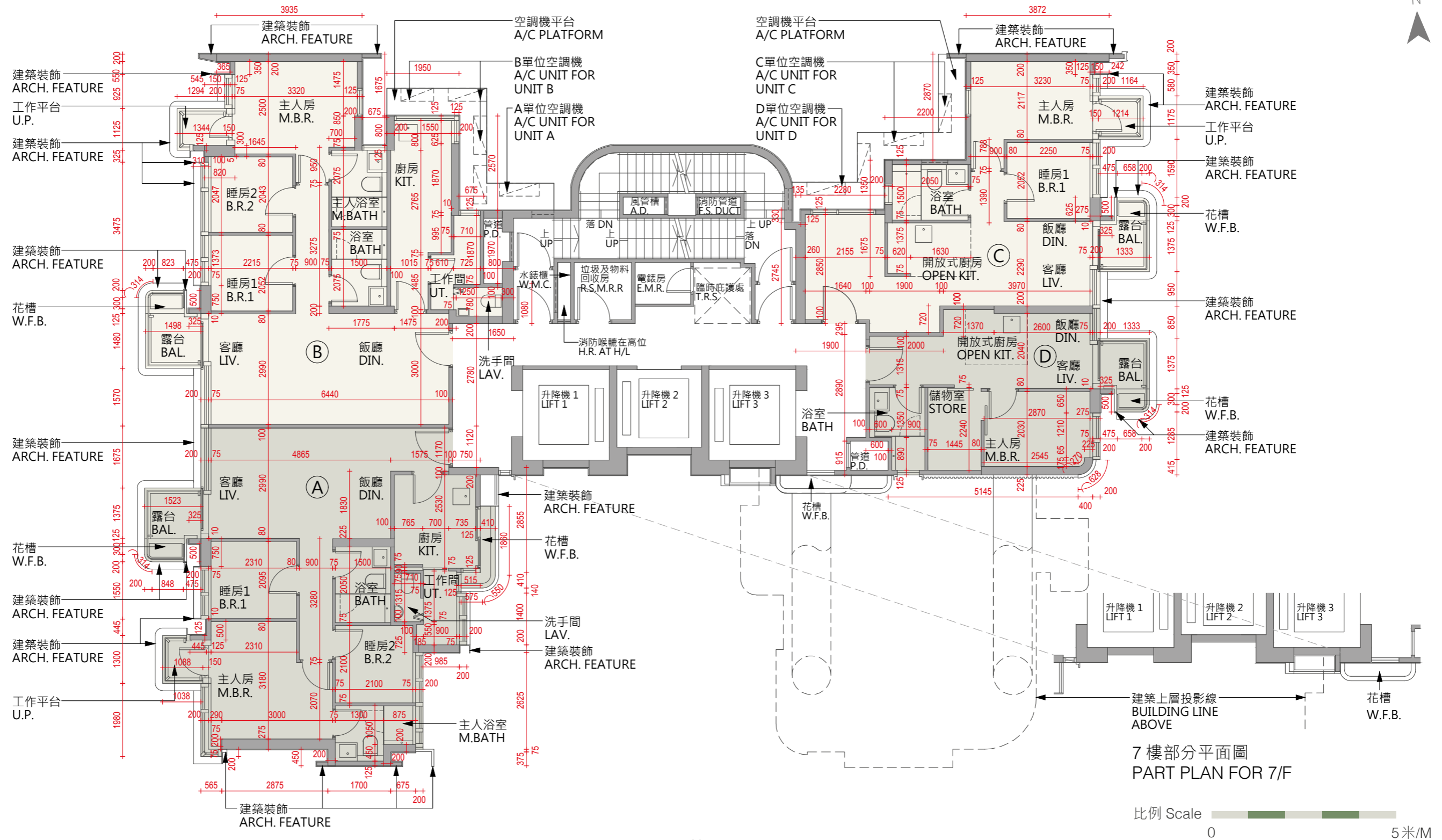
The internal areas on the residential properties on the upper floors will generally be slightly larger than on the lower floors because of the reducing thickness of the structural walls on the upper floors.

Notes:

1. 4/F, 13/F and 14/F are omitted.
2. Please refer to page 21 of this sales brochure for the notes and legends of the terms and abbreviations for the floors plans of residential properties.

11 發展項目的住宅物業的樓面平面圖 FLOOR PLANS OF RESIDENTIAL PROPERTIES IN THE DEVELOPMENT

5樓至7樓
5/F - 7/F



7樓部分平面圖
PART PLAN FOR 7/F

備註：

1. 平面圖所列的數字為毫米標示之建築結構尺寸，並以四捨五入至整數。
2. 不設4樓、13樓及14樓。
3. 請參閱本售樓說明書第21頁為住宅物業樓面圖而設之備註和圖例。

Notes:

1. The dimensions in floor plans are all structural dimensions in millimeter and rounded off to nearest integer.
2. 4/F, 13/F, and 14/F are omitted.
3. Please refer to page 21 of this sales brochure for the notes and legends of the terms and abbreviations for the floor plans of residential properties.

11 發展項目的住宅物業的樓面平面圖

FLOOR PLANS OF RESIDENTIAL PROPERTIES IN THE DEVELOPMENT

每個住宅物業 Eash Residential Property	樓層 Floor	單位 Unit			
		A	B	C	D
每個住宅物業的樓板（不包括灰泥）的厚度（毫米） Thickness of Floor Slab (excluding plaster) of each residential property (mm)	5 樓 至 6 樓 5/F - 6/F	100, 130, 150, 180	100, 150, 180	100, 150, 180	130, 150, 180
每個住宅物業的層與層之間的高度（指該樓層之石屎地台面與上一層石屎地台面之高度距離）（米） The floor-to-floor height (refers to the height between the top surface of the structural slab of a floor and the top surface of the structural slab of its immediate upper floor) of each residential property (m)		3150, 3450, 3500	3150, 3450, 3500	3150, 3450, 3500	3150, 3450, 3500
每個住宅物業的樓板（不包括灰泥）的厚度（毫米） Thickness of Floor Slab (excluding plaster) of each residential property (mm)	7 樓 7/F	100, 130, 150, 180	100, 150, 180	100, 150, 600	130, 150, 600
每個住宅物業的層與層之間的高度（指該樓層之石屎地台面與上一層石屎地台面之高度距離）（米） The floor-to-floor height (refers to the height between the top surface of the structural slab of a floor and the top surface of the structural slab of its immediate upper floor) of each residential property (m)		3150, 3450, 3500	3150, 3450, 3500	3150, 3450, 3500	3150, 3450, 3500

因住宅物業的較高樓層的結構牆的厚度遞減，較高樓層的內部面積，一般比較低樓層的內部面積稍大。

備註：

1. 不設 4 樓、13 樓及 14 樓。
2. 請參閱本售樓說明書第 21 頁為住宅物業樓面圖而設之備注和圖例。

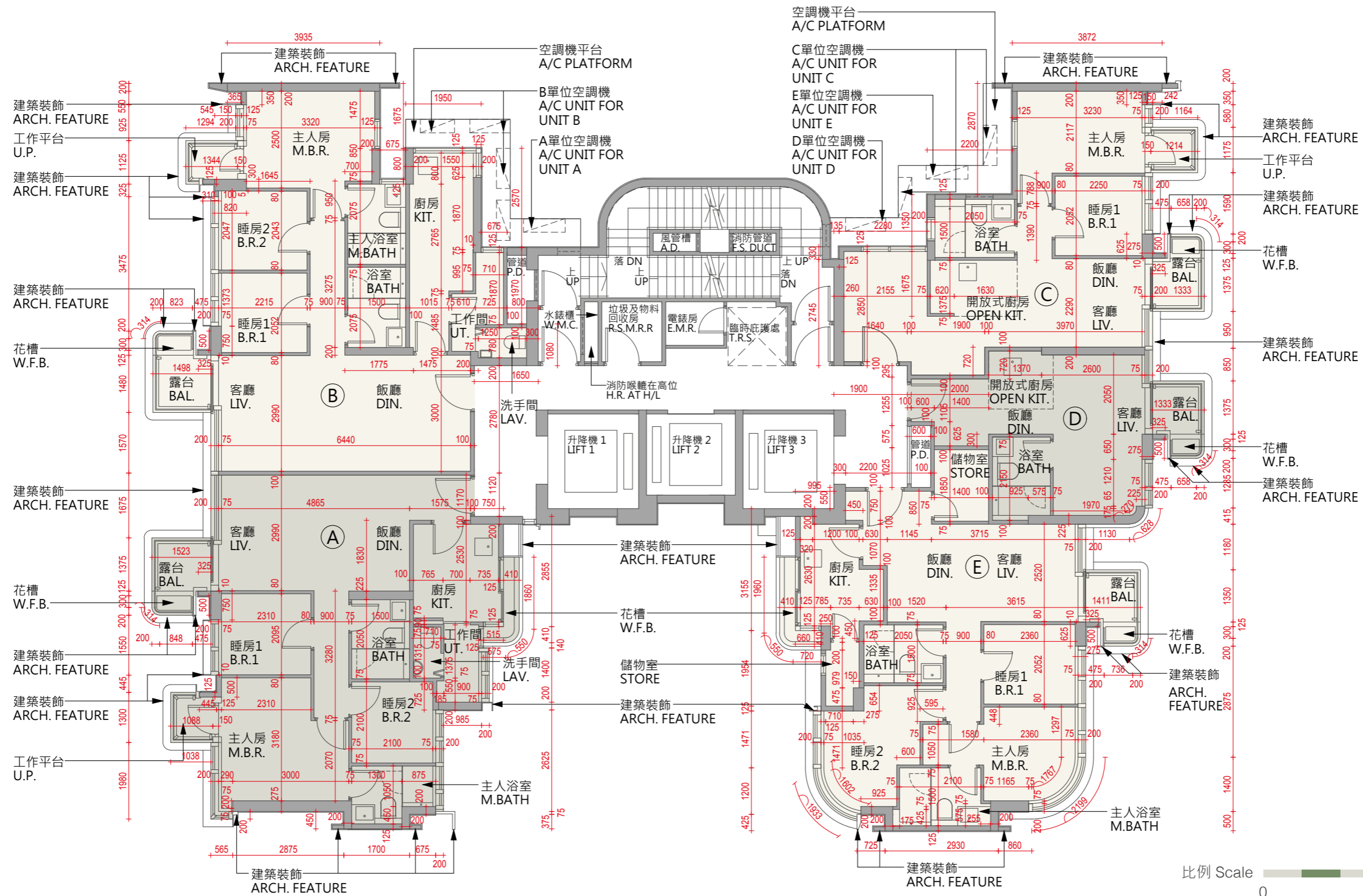
The internal areas on the residential properties on the upper floors will generally be slightly larger than on the lower floors because of the reducing thickness of the structural walls on the upper floors.

Notes:

1. 4/F, 13/F and 14/F are omitted.
2. Please refer to page 21 of this sales brochure for the notes and legends of the terms and abbreviations for the floors plans of residential properties.

11 發展項目的住宅物業的樓面平面圖 FLOOR PLANS OF RESIDENTIAL PROPERTIES IN THE DEVELOPMENT

8樓
8/F



備註：

1. 平面圖所列的數字為毫米標示之建築結構尺寸，並以四捨五入至整數。
2. 不設4樓、13樓及14樓。
3. 請參閱本售樓說明書第21頁為住宅物業樓面圖而設之備註和圖例。

Notes:

1. The dimensions in floor plans are all structural dimensions in millimeter and rounded off to nearest integer.
2. 4/F, 13/F, and 14/F are omitted.
3. Please refer to page 21 of this sales brochure for the notes and legends of the terms and abbreviations for the floor plans of residential properties.

11 發展項目的住宅物業的樓面平面圖

FLOOR PLANS OF RESIDENTIAL PROPERTIES IN THE DEVELOPMENT

每個住宅物業 Eash Residential Property	樓層 Floor	單位 Unit				
		A	B	C	D	E
每個住宅物業的樓板（不包括灰泥）的厚度（毫米） Thickness of Floor Slab (excluding plaster) of each residential property (mm)	8 樓 8/F	150, 180	150, 180	150, 180	150, 180	100, 130, 150, 180
每個住宅物業的層與層之間的高度（指該樓層之石屎地台面與上一層石屎地台面之高度距離）（米） The floor-to-floor height (refers to the height between the top surface of the structural slab of a floor and the top surface of the structural slab of its immediate upper floor) of each residential property (m)		3150, 3450, 3500	3150, 3450, 3500	3150, 3450, 3500	3150, 3450, 3500	3150, 3450, 3500

因住宅物業的較高樓層的結構牆的厚度遞減，較高樓層的內部面積，一般比較低樓層的內部面積稍大。

備註：

1. 不設 4 樓、13 樓及 14 樓。
2. 請參閱本售樓說明書第 21 頁為住宅物業樓面圖而設之備注和圖例。

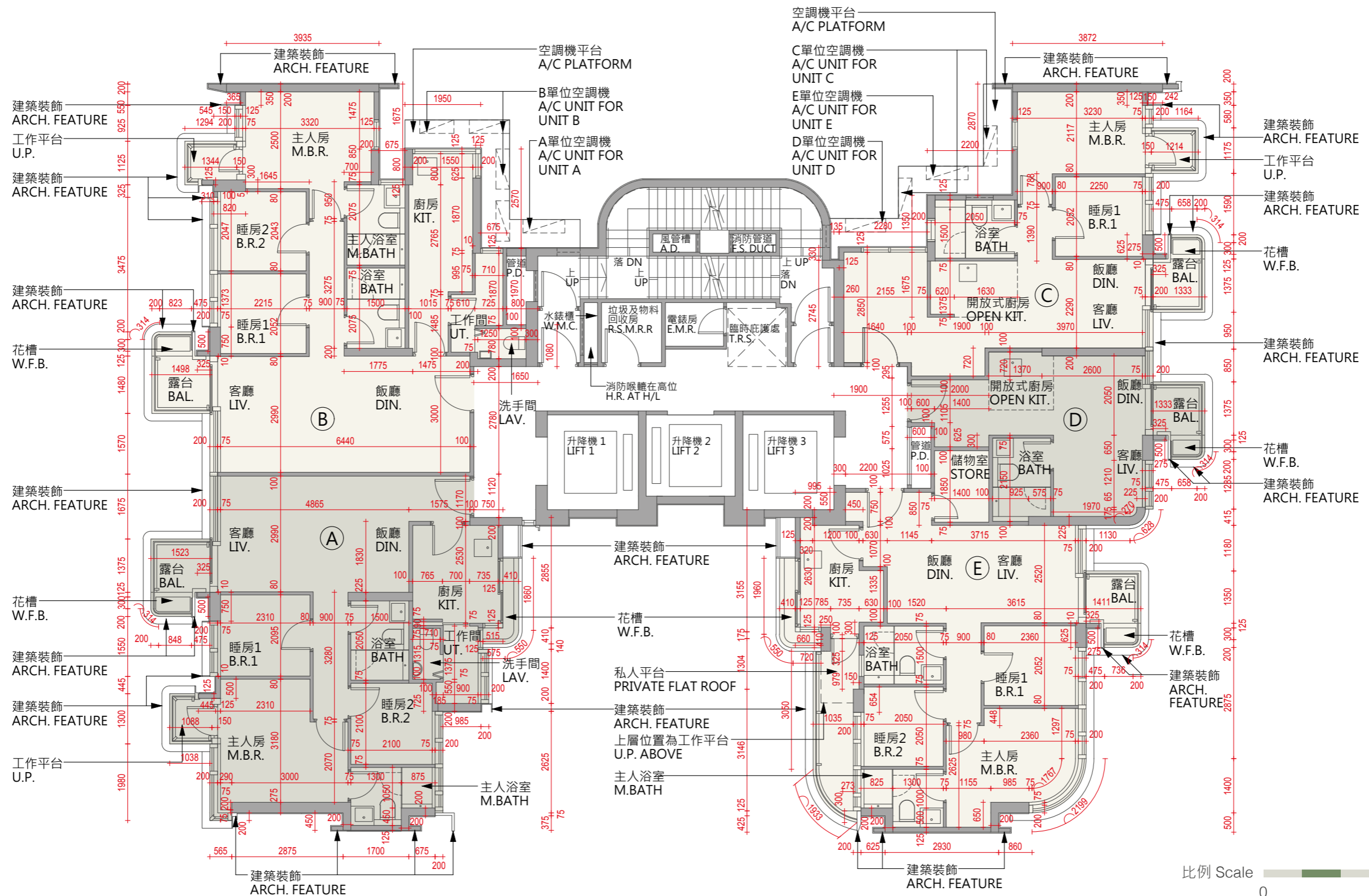
The internal areas on the residential properties on the upper floors will generally be slightly larger than on the lower floors because of the reducing thickness of the structural walls on the upper floors.

Notes:

1. 4/F, 13/F and 14/F are omitted.
2. Please refer to page 21 of this sales brochure for the notes and legends of the terms and abbreviations for the floors plans of residential properties.

11 發展項目的住宅物業的樓面平面圖 FLOOR PLANS OF RESIDENTIAL PROPERTIES IN THE DEVELOPMENT

9樓
9/F



備註：

1. 平面圖所列的數字為毫米標示之建築結構尺寸，並以四捨五入至整數。
2. 不設4樓、13樓及14樓。
3. 請參閱本售樓說明書第21頁為住宅物業樓面圖而設之備註和圖例。

Notes:

1. The dimensions in floor plans are all structural dimensions in millimeter and rounded off to nearest integer.
2. 4/F, 13/F, and 14/F are omitted.
3. Please refer to page 21 of this sales brochure for the notes and legends of the terms and abbreviations for the floor plans of residential properties.

11 發展項目的住宅物業的樓面平面圖

FLOOR PLANS OF RESIDENTIAL PROPERTIES IN THE DEVELOPMENT

每個住宅物業 Eash Residential Property	樓層 Floor	單位 Unit				
		A	B	C	D	E
每個住宅物業的樓板（不包括灰泥）的厚度（毫米） Thickness of Floor Slab (excluding plaster) of each residential property (mm)	9 樓 9/F	150, 180	150, 180	150, 180	150, 180	100, 130, 150, 180
每個住宅物業的層與層之間的高度（指該樓層之石屎地台面與上一層石屎地台面之高度距離）（米） The floor-to-floor height (refers to the height between the top surface of the structural slab of a floor and the top surface of the structural slab of its immediate upper floor) of each residential property (m)		3150, 3450, 3500	3150, 3450, 3500	3150, 3450, 3500	3150, 3450, 3500	3150, 3450, 3500

因住宅物業的較高樓層的結構牆的厚度遞減，較高樓層的內部面積，一般比較低樓層的內部面積稍大。

備註：

1. 不設 4 樓、13 樓及 14 樓。
2. 請參閱本售樓說明書第 21 頁為住宅物業樓面圖而設之備注和圖例。

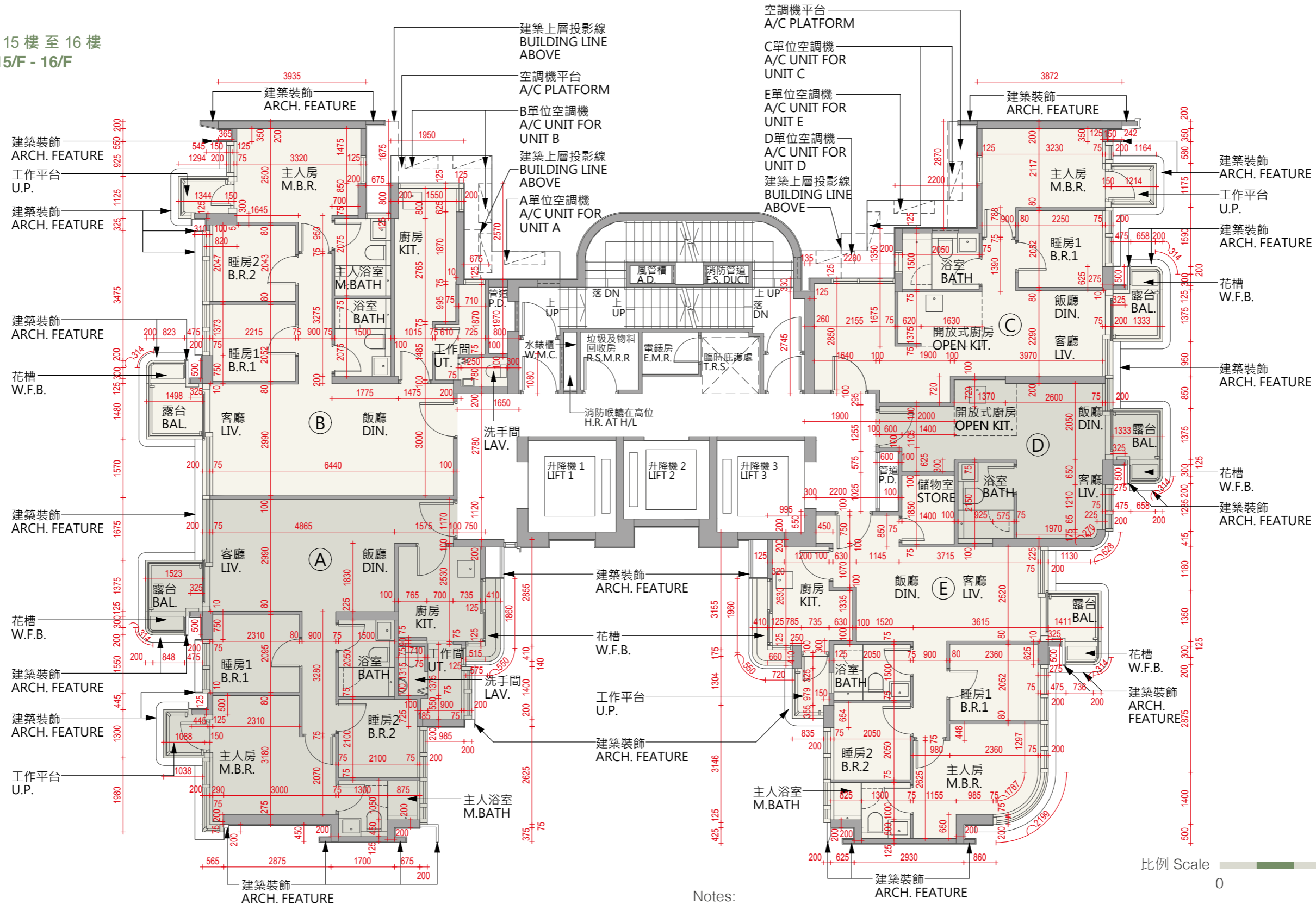
The internal areas on the residential properties on the upper floors will generally be slightly larger than on the lower floors because of the reducing thickness of the structural walls on the upper floors.

Notes:

1. 4/F, 13/F and 14/F are omitted.
2. Please refer to page 21 of this sales brochure for the notes and legends of the terms and abbreviations for the floors plans of residential properties.

11 發展項目的住宅物業的樓面平面圖 FLOOR PLANS OF RESIDENTIAL PROPERTIES IN THE DEVELOPMENT

10樓至12樓及15樓至16樓
10/F - 12/F and 15/F - 16/F



- 備註：
1. 平面圖所列的數字為毫米標示之建築結構尺寸，並以四捨五入至整數。
 2. 不設4樓、13樓及14樓。
 3. 請參閱本售樓說明書第21頁為住宅物業樓面圖而設之備註和圖例。

- Notes:
1. The dimensions in floor plans are all structural dimensions in millimeter and rounded off to nearest integer.
 2. 4/F, 13/F, and 14/F are omitted.
 3. Please refer to page 21 of this sales brochure for the notes and legends of the terms and abbreviations for the floor plans of residential properties.

11 發展項目的住宅物業的樓面平面圖

FLOOR PLANS OF RESIDENTIAL PROPERTIES IN THE DEVELOPMENT

每個住宅物業 Eash Residential Property	樓層 Floor	單位 Unit				
		A	B	C	D	E
每個住宅物業的樓板（不包括灰泥）的厚度（毫米） Thickness of Floor Slab (excluding plaster) of each residential property (mm)	10 樓至 12 樓 及 15 樓 10/F - 12/F and 15/F	150, 180	150, 180	150, 180	150, 180	100, 130, 150, 180
每個住宅物業的層與層之間的高度（指該樓層之石屎地台面與上一層石屎地台面之高度距離）（米） The floor-to-floor height (refers to the height between the top surface of the structural slab of a floor and the top surface of the structural slab of its immediate upper floor) of each residential property (m)		3150, 3450, 3500	3150, 3450, 3500	3150, 3450, 3500	3150, 3450, 3500	3150, 3450, 3500
每個住宅物業的樓板（不包括灰泥）的厚度（毫米） Thickness of Floor Slab (excluding plaster) of each residential property (mm)	16 樓 16/F	150, 180	150, 180	150	150	150
每個住宅物業的層與層之間的高度（指該樓層之石屎地台面與上一層石屎地台面之高度距離）（米） The floor-to-floor height (refers to the height between the top surface of the structural slab of a floor and the top surface of the structural slab of its immediate upper floor) of each residential property (m)		3150, 3400 3450, 3500	3150, 3450, 3500	3150, 3400 3450, 3500	3150, 3450, 3500	3150, 3450, 3500

因住宅物業的較高樓層的結構牆的厚度遞減，較高樓層的內部面積，一般比較低樓層的內部面積稍大。

備註：

1. 不設 4 樓、13 樓及 14 樓。
2. 請參閱本售樓說明書第 21 頁為住宅物業樓面圖而設之備注和圖例。

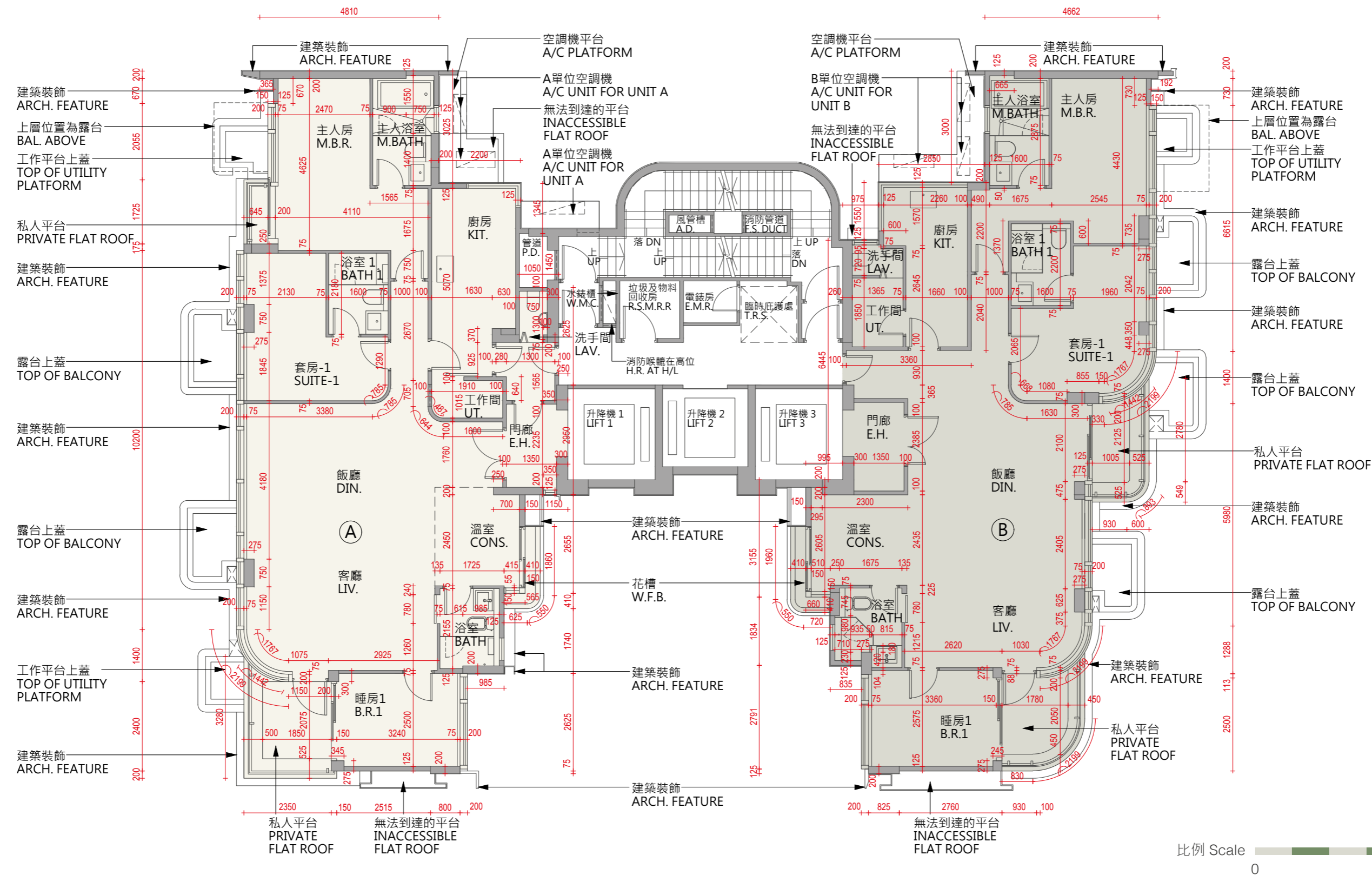
The internal areas on the residential properties on the upper floors will generally be slightly larger than on the lower floors because of the reducing thickness of the structural walls on the upper floors.

Notes:

1. 4/F, 13/F and 14/F are omitted.
2. Please refer to page 21 of this sales brochure for the notes and legends of the terms and abbreviations for the floors plans of residential properties.

11 發展項目的住宅物業的樓面平面圖 FLOOR PLANS OF RESIDENTIAL PROPERTIES IN THE DEVELOPMENT

17樓
17/F



備註：

1. 平面圖所列的數字為毫米標示之建築結構尺寸，並以四捨五入至整數。
2. 不設4樓、13樓及14樓。
3. 請參閱本售樓說明書第21頁為住宅物業樓面圖而設之備註和圖例。

Notes:

1. The dimensions in floor plans are all structural dimensions in millimeter and rounded off to nearest integer.
2. 4/F, 13/F, and 14/F are omitted.
3. Please refer to page 21 of this sales brochure for the notes and legends of the terms and abbreviations for the floor plans of residential properties.

11 發展項目的住宅物業的樓面平面圖

FLOOR PLANS OF RESIDENTIAL PROPERTIES IN THE DEVELOPMENT

每個住宅物業 Eash Residential Property	樓層 Floor	單位 Unit	
		A	B
每個住宅物業的樓板（不包括灰泥）的厚度（毫米） Thickness of Floor Slab (excluding plaster) of each residential property (mm)	17 樓 17/F	150, 180, 200, 220	150, 180, 220
每個住宅物業的層與層之間的高度（指該樓層之石屎地台面與上一層石屎地台面之高度距離）（米） The floor-to-floor height (refers to the height between the top surface of the structural slab of a floor and the top surface of the structural slab of its immediate upper floor)		3150, 3400, 3450, 3500	3150, 3450, 3500

因住宅物業的較高樓層的結構牆的厚度遞減，較高樓層的內部面積，一般比較低樓層的內部面積稍大。

備註：

1. 不設 4 樓、13 樓及 14 樓。
2. 請參閱本售樓說明書第 21 頁為住宅物業樓面圖而設之備注和圖例。

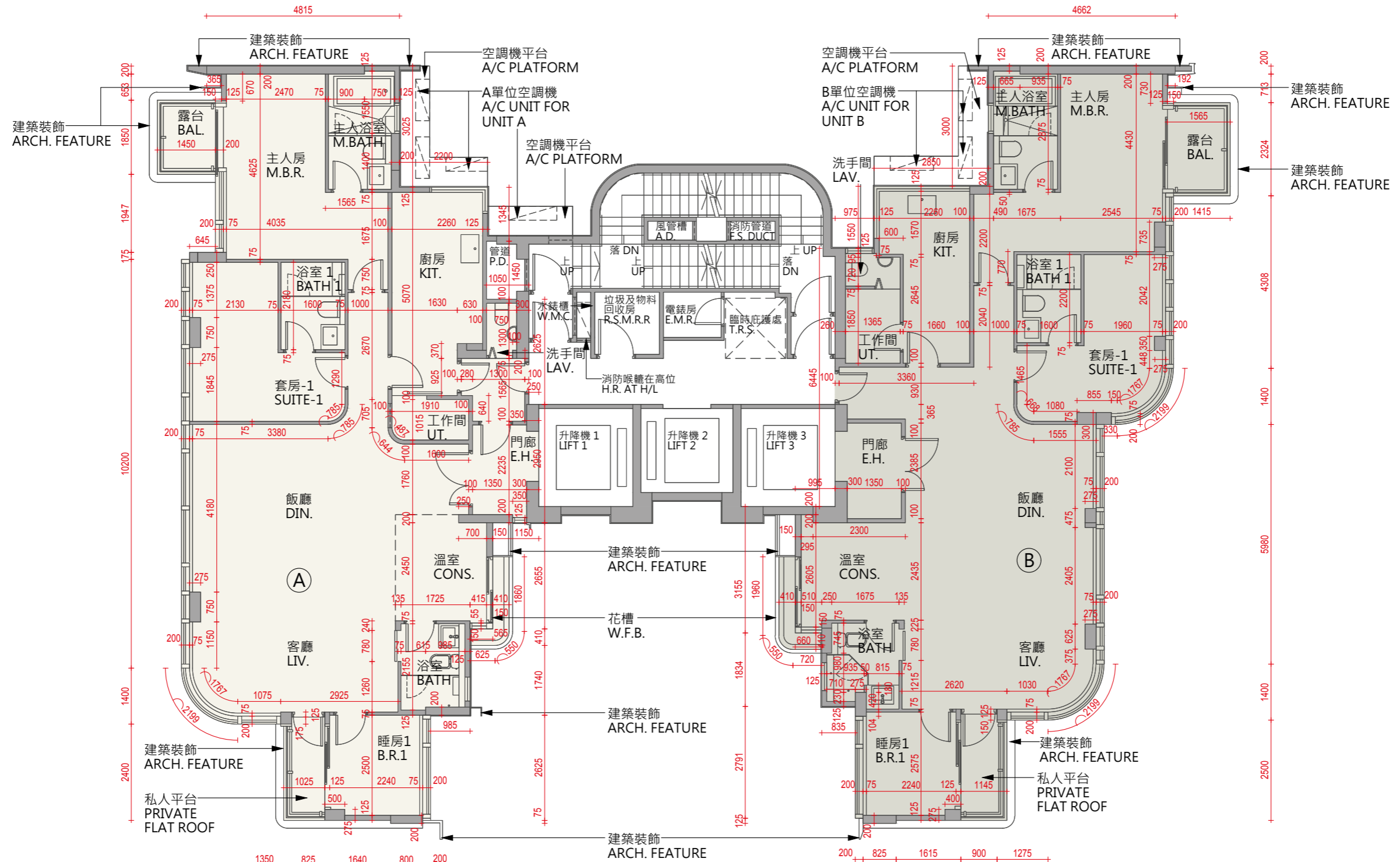
The internal areas on the residential properties on the upper floors will generally be slightly larger than on the lower floors because of the reducing thickness of the structural walls on the upper floors.

Notes:

1. 4/F, 13/F and 14/F are omitted.
2. Please refer to page 21 of this sales brochure for the notes and legends of the terms and abbreviations for the floors plans of residential properties.

11 發展項目的住宅物業的樓面平面圖 FLOOR PLANS OF RESIDENTIAL PROPERTIES IN THE DEVELOPMENT

18樓
18/F



比例 Scale 0 5米/M

備註：

1. 平面圖所列的數字為毫米標示之建築結構尺寸，並以四捨五入至整數。
2. 不設4樓、13樓及14樓。
3. 請參閱本售樓說明書第21頁為住宅物業樓面圖而設之備註和圖例。

Notes:

1. The dimensions in floor plans are all structural dimensions in millimeter and rounded off to nearest integer.
2. 4/F, 13/F, and 14/F are omitted.
3. Please refer to page 21 of this sales brochure for the notes and legends of the terms and abbreviations for the floor plans of residential properties.

11 發展項目的住宅物業的樓面平面圖

FLOOR PLANS OF RESIDENTIAL PROPERTIES IN THE DEVELOPMENT

每個住宅物業 Eash Residential Property	樓層 Floor	單位 Unit	
		A	B
每個住宅物業的樓板（不包括灰泥）的厚度（毫米） Thickness of Floor Slab (excluding plaster) of each residential property (mm)	18 樓 18/F	150, 180, 230	150, 230
每個住宅物業的層與層之間的高度（指該樓層之石屎地台面與上一層石屎地台面之高度距離）（米） The floor-to-floor height (refers to the height between the top surface of the structural slab of a floor and the top surface of the structural slab of its immediate upper floor) of each residential property (m)		3150, 3450, 3500	3150, 3450, 3500

因住宅物業的較高樓層的結構牆的厚度遞減，較高樓層的內部面積，一般比較低樓層的內部面積稍大。

備註：

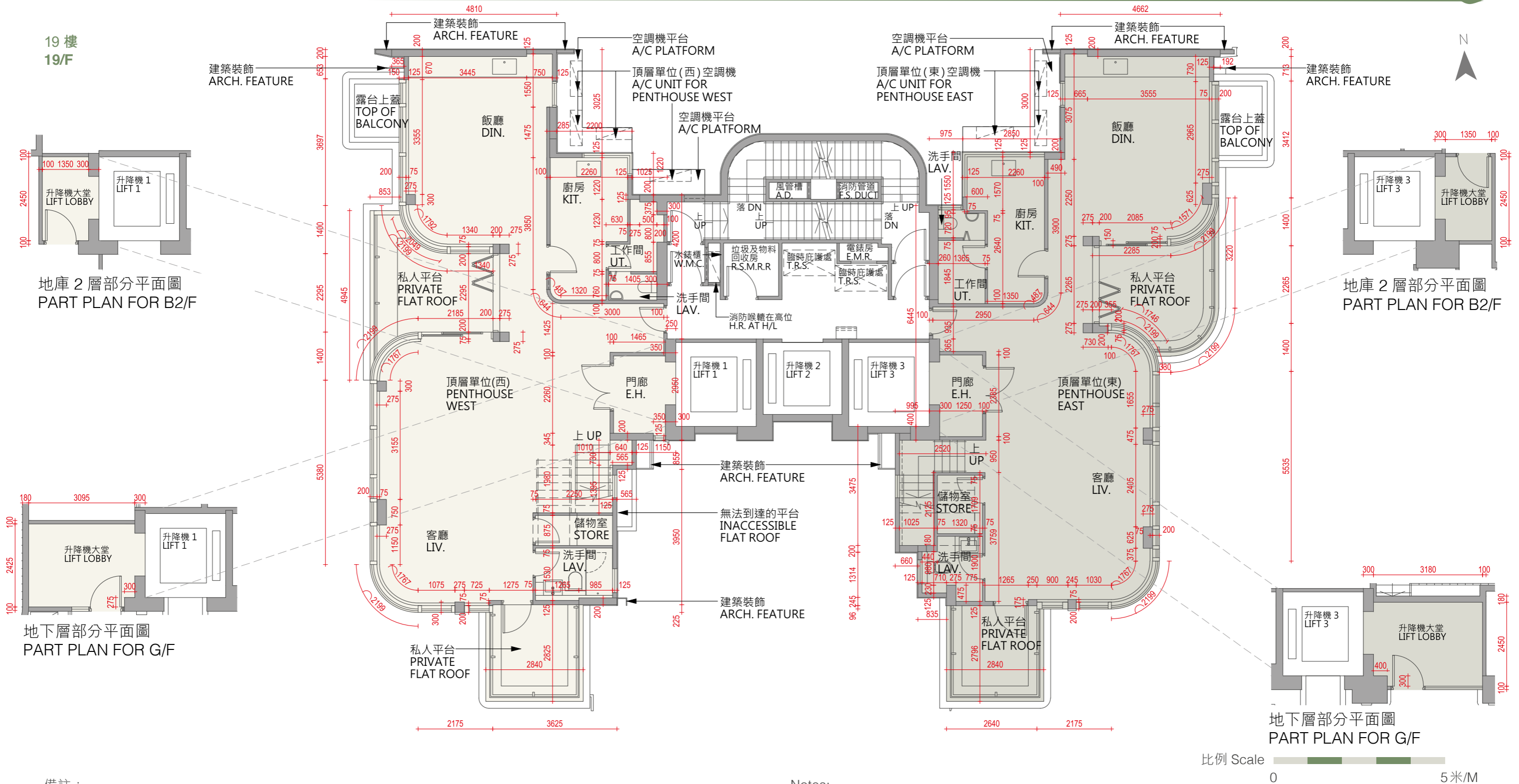
1. 不設 4 樓、13 樓及 14 樓。
2. 請參閱本售樓說明書第 21 頁為住宅物業樓面圖而設之備注和圖例。

The internal areas on the residential properties on the upper floors will generally be slightly larger than on the lower floors because of the reducing thickness of the structural walls on the upper floors.

Notes:

1. 4/F, 13/F and 14/F are omitted.
2. Please refer to page 21 of this sales brochure for the notes and legends of the terms and abbreviations for the floors plans of residential properties.

11 發展項目的住宅物業的樓面平面圖 FLOOR PLANS OF RESIDENTIAL PROPERTIES IN THE DEVELOPMENT



備註：

1. 平面圖所列的數字為毫米標示之建築結構尺寸，並以四捨五入至整數。
2. 不設 4 樓、13 樓及 14 樓。
3. 請參閱本售樓說明書第 21 頁為住宅物業樓面圖而設之備註和圖例。
4. 頂層單位(東)包括位於地庫 2 層及地下層的升降機大堂。
5. 頂層單位(西)包括位於地庫 2 層及地下層的升降機大堂。

Notes:

1. The dimensions in floor plans are all structural dimensions in millimeter and rounded off to nearest integer.
2. 4/F, 13/F, and 14/F are omitted.
3. Please refer to page 21 of this sales brochure for the notes and legends of the terms and abbreviations for the floor plans of residential properties.
4. Penthouse East includes lift lobbies on B2/F and G/F.
5. Penthouse West includes lift lobbies on B2/F and G/F.

11 發展項目的住宅物業的樓面平面圖 FLOOR PLANS OF RESIDENTIAL PROPERTIES IN THE DEVELOPMENT

每個住宅物業 Eash Residential Property	樓層 Floor	單位 Unit	
		頂層單位 (西) Penthouse West	頂層單位 (東) Penthouse East
每個住宅物業的樓板 (不包括灰泥) 的厚度 (毫米) Thickness of Floor Slab (excluding plaster) of each residential property (mm)	19 樓 19/F	150, 180, 230	150, 180, 200
每個住宅物業的層與層之間的高度 (指該樓層之石屎地台面與上一層石屎地台面之高度距離) (米) The floor-to-floor height (refers to the height between the top surface of the structural slab of a floor and the top surface of the structural slab of its immediate upper floor) of each residential property (m)		3400, 3450, 3500	3400, 3450, 3500
每個住宅物業的樓板 (不包括灰泥) 的厚度 (毫米) Thickness of Floor Slab (excluding plaster) of each residential property (mm)	地下層 升降機大堂 G/F LIFT LOBBY	200	150, 200
每個住宅物業的層與層之間的高度 (指該樓層之石屎地台面與上一層石屎地台面之高度距離) (米) The floor-to-floor height (refers to the height between the top surface of the structural slab of a floor and the top surface of the structural slab of its immediate upper floor) of each residential property (m)		4950	4950
每個住宅物業的樓板 (不包括灰泥) 的厚度 (毫米) Thickness of Floor Slab (excluding plaster) of each residential property (mm)	地庫 2 層 升降機大堂 B2/F LIFT LOBBY	180	180
每個住宅物業的層與層之間的高度 (指該樓層之石屎地台面與上一層石屎地台面之高度距離) (米) The floor-to-floor height (refers to the height between the top surface of the structural slab of a floor and the top surface of the structural slab of its immediate upper floor) of each residential property (m)		3350	3350

因住宅物業的較高樓層的結構牆的厚度遞減，較高樓層的內部面積，一般比較低樓層的內部面積稍大。
備註：

1. 不設 4 樓、13 樓及 14 樓。
2. 請參閱本售樓說明書第 21 頁為住宅物業樓面圖而設之備注和圖例。
3. 頂層單位 (東) 包括位於地庫 2 層及地下層的升降機大堂。
4. 頂層單位 (西) 包括位於地庫 2 層及地下層的升降機大堂。

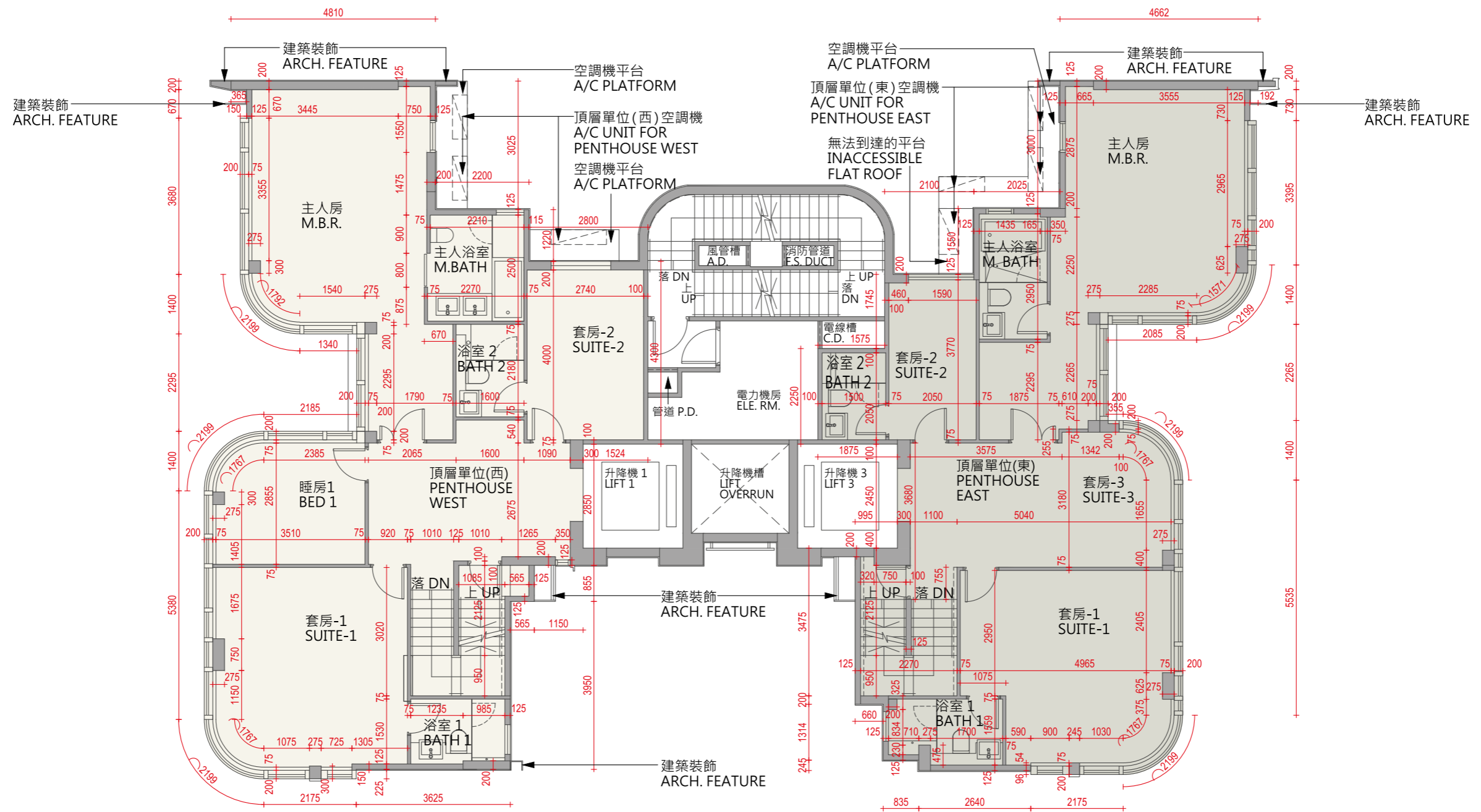
The internal areas on the residential properties on the upper floors will generally be slightly larger than on the lower floors because of the reducing thickness of the structural walls on the upper floors.

Notes:

1. 4/F, 13/F and 14/F are omitted.
2. Please refer to page 21 of this sales brochure for the notes and legends of the terms and abbreviations for the floors plans of residential properties.
3. Penthouse East includes lift lobbies on B2/F and G/F.
4. Penthouse West includes lift lobbies on B2/F and G/F.

11 發展項目的住宅物業的樓面平面圖 FLOOR PLANS OF RESIDENTIAL PROPERTIES IN THE DEVELOPMENT

20樓
20/F



比例 Scale 0 5米/M

備註：

1. 平面圖所列的數字為毫米標示之建築結構尺寸，並以四捨五入至整數。
2. 不設4樓、13樓及14樓。
3. 請參閱本售樓說明書第21頁為住宅物業樓面圖而設之備註和圖例。
4. 頂層單位（東）包括位於地庫2層及地下層的升降機大堂。
5. 頂層單位（西）包括位於地庫2層及地下層的升降機大堂。

Notes:

1. The dimensions in floor plans are all structural dimensions in millimeter and rounded off to nearest integer.
2. 4/F, 13/F, and 14/F are omitted.
3. Please refer to page 21 of this sales brochure for the notes and legends of the terms and abbreviations for the floor plans of residential properties.
4. Penthouse East includes lift lobbies on B2/F and G/F.
5. Penthouse West includes lift lobbies on B2/F and G/F.

11 發展項目的住宅物業的樓面平面圖 FLOOR PLANS OF RESIDENTIAL PROPERTIES IN THE DEVELOPMENT

每個住宅物業 Eash Residential Property	樓層 Floor	單位 Unit	
		頂層單位 (西) Penthouse West	頂層單位 (東) Penthouse East
每個住宅物業的樓板 (不包括灰泥) 的厚度 (毫米) Thickness of Floor Slab (excluding plaster) of each residential property (mm)	20 樓 20/F	150, 180, 230	150, 180
每個住宅物業的層與層之間的高度 (指該樓層之石屎地台面與上一層石屎地台面之高度距離) (米) The floor-to-floor height (refers to the height between the top surface of the structural slab of a floor and the top surface of the structural slab of its immediate upper floor) of each residential property (m)		3500	3500

因住宅物業的較高樓層的結構牆的厚度遞減，較高樓層的內部面積，一般比較低樓層的內部面積稍大。
備註：

1. 不設 4 樓、13 樓及 14 樓。
2. 請參閱本售樓說明書第 21 頁為住宅物業樓面圖而設之備注和圖例。
3. 頂層單位 (東) 包括位於地庫 2 層及地下層的升降機大堂。
4. 頂層單位 (西) 包括位於地庫 2 層及地下層的升降機大堂。

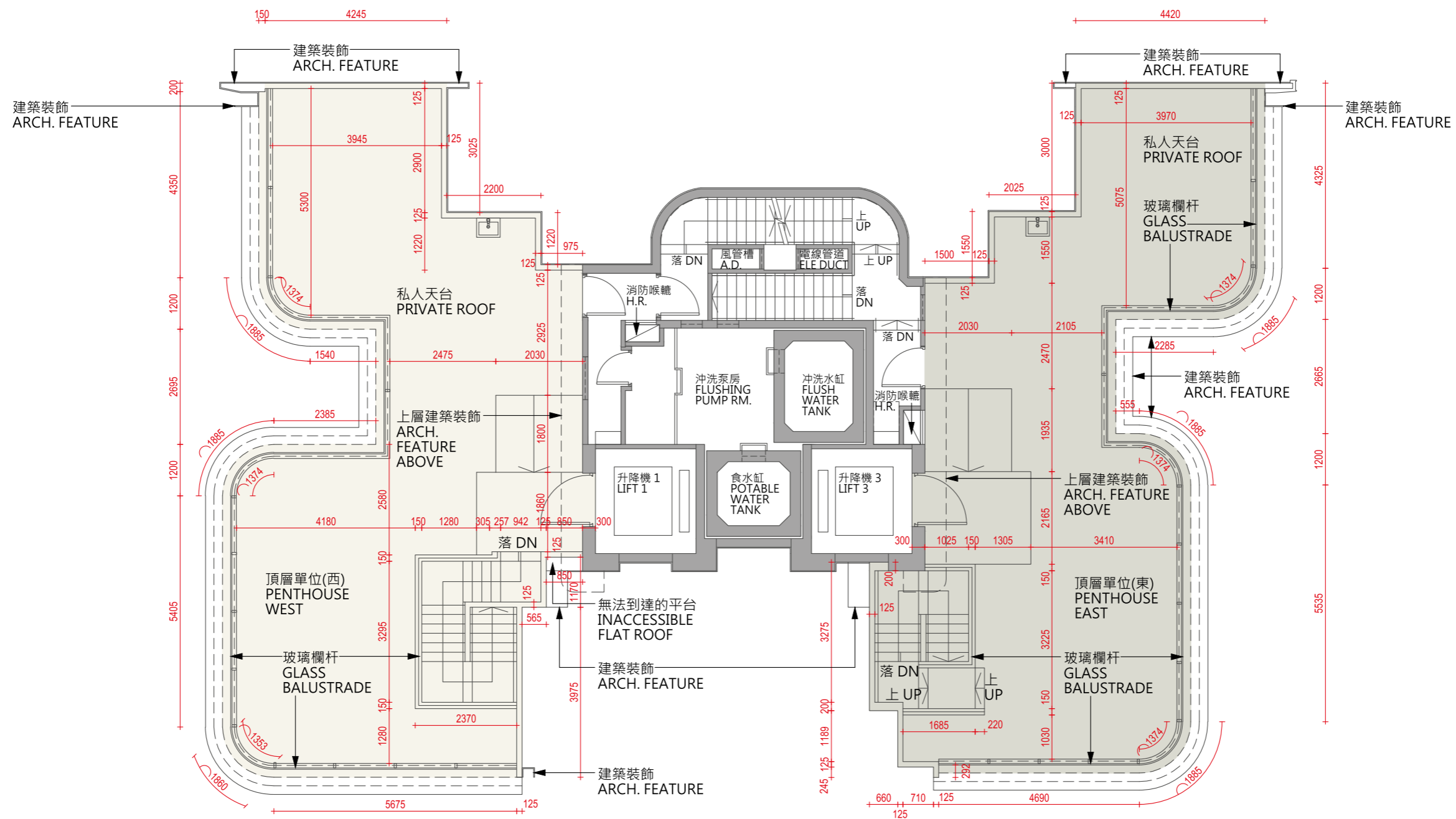
The internal areas on the residential properties on the upper floors will generally be slightly larger than on the lower floors because of the reducing thickness of the structural walls on the upper floors.

Notes:

1. 4/F, 13/F and 14/F are omitted.
2. Please refer to page 21 of this sales brochure for the notes and legends of the terms and abbreviations for the floors plans of residential properties.
3. Penthouse East includes lift lobbies on B2/F and G/F.
4. Penthouse West includes lift lobbies on B2/F and G/F.

11 發展項目的住宅物業的樓面平面圖 FLOOR PLANS OF RESIDENTIAL PROPERTIES IN THE DEVELOPMENT

天台
Roof



備註：

1. 平面圖所列的數字為毫米標示之建築結構尺寸，並以四捨五入至整數。
2. 不設 4 樓、13 樓及 14 樓。
3. 請參閱本售樓說明書第 21 頁為住宅物業樓面圖而設之備註和圖例。

Notes:

1. The dimensions in floor plans are all structural dimensions in millimeter and rounded off to nearest integer.
2. 4/F, 13/F, and 14/F are omitted.
3. Please refer to page 21 of this sales brochure for the notes and legends of the terms and abbreviations for the floor plans of residential properties.

比例 Scale 0 5米/M