

11 FLOOR PLANS OF RESIDENTIAL PROPERTIES IN THE PHASE



期數的住宅物業的樓面平面圖

Legend 圖例

A/C PLATFORM	= 空調機平台 AIR CONDITIONER PLATFORM
A.D.	= 排風管 AIR DUCT
ARCH. FEATURE	= 建築裝飾 ARCHITECTURAL FEATURE
BAL.	= 露台 BALCONY
BATH	= 浴室 BATHROOM
B.R.	= 睡房 BEDROOM
DIN.	= 飯廳 DINING ROOM
DN	= 落 DOWN
E.M.C.	= 電錶櫃 ELECTRICAL METER CABINET
E.M.R.	= 電錶房 ELECTRICAL METER ROOM
E.L. ROOM	= 電線房 ELECTRICAL ROOM
E.L.V.	= 特低壓電線房 EXTRA-LOW VOLTAGE CABLE ROOM
E.L. DUCT	= 電線槽 ELECTRICAL DUCT
H.R.	= 消防喉轆 HOSE REEL
KIT.	= 廚房 KITCHEN
LAV.	= 衛生間 LAVATORY
LIV.	= 客廳 LIVING ROOM
M.B.R.	= 主人睡房 MASTER BEDROOM
M. BATH	= 主人浴室 MASTER BATHROOM
M. ENSUITE	= 主人套房 MASTER ENSUITE
OPEN KIT.	= 開放式廚房 OPEN KITCHEN
P.D.	= 管道 PIPE DUCT

Notes:

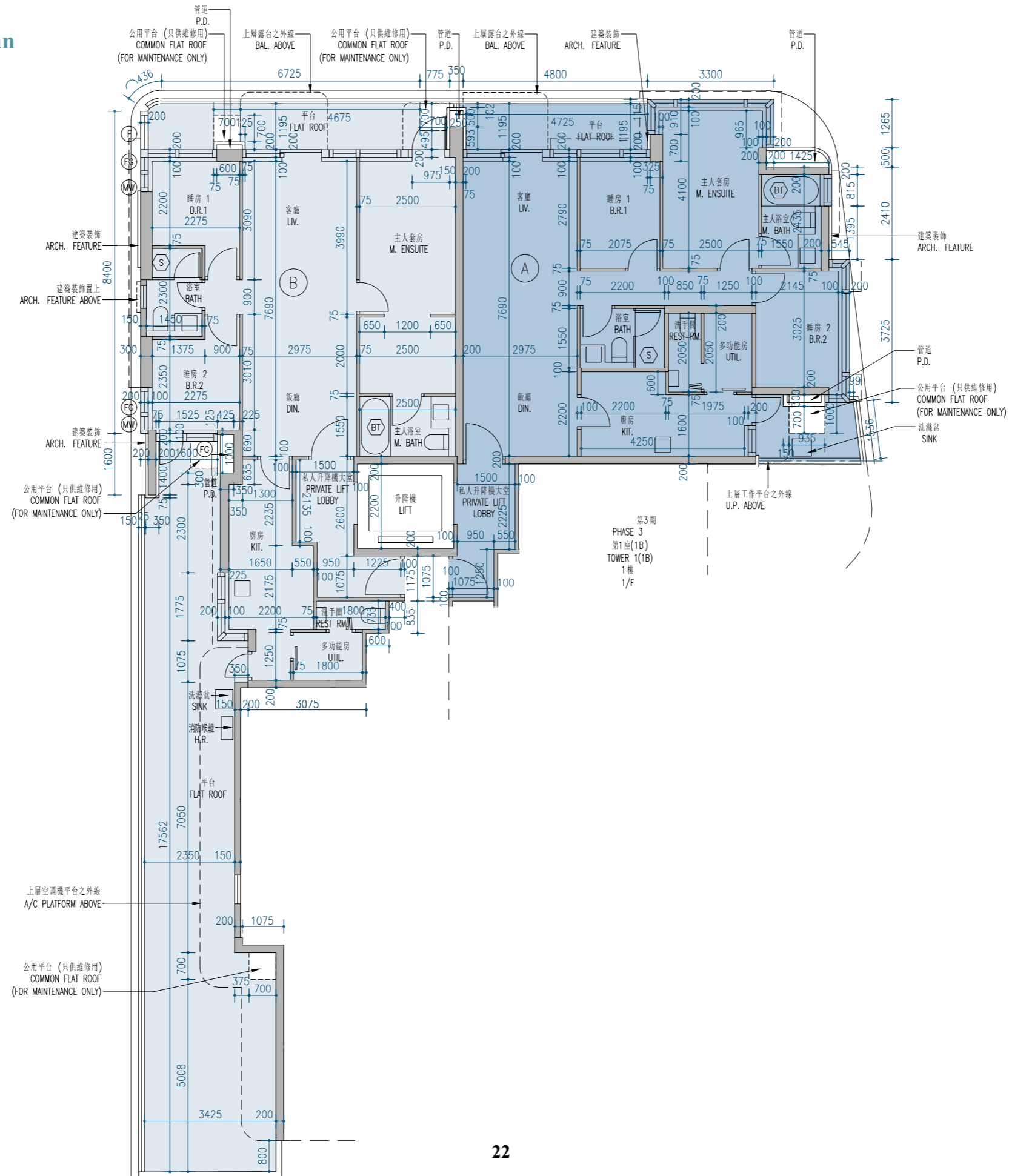
- There may be architectural features and/or exposed pipes on external walls of some floors.
- Common pipes exposed and/ or enclosed in cladding are located at/ adjacent to balcony and/ or flat roof and/ or roof and/ or utility platform and/ or air-conditioner platform and/ or external wall of some units.
- There are ceiling bulkheads or false ceiling at living room, dining room, bedroom, ensuite, bathroom, rest room, lavatory, utility room, store, open kitchen and kitchen of some units for the air-conditioning system and/ or mechanical and electrical services. There are sunken slabs for mechanical & electrical services of units above at some residential units.
- The internal ceiling height within some units may vary due to structural, architectural and/ or decoration design variations.
- Symbols of fittings and fitments shown on the floor plans, such as doors, bath tubs, basins, water closets, basin cabinets, sinks etc, are retrieved from the latest approved building plans and only for general indication of their approximate location, but not indications of their actual size, design, shape and quantity.
- For some residential units, the air-conditioner platform(s) outside the residential unit will be placed with 1 or more than 1 air-conditioner (Outdoor Unit). These air-conditioners may generate heat and/ or sound.
- Balconies and utility platforms are non-enclosed areas.
- During the necessary maintenance of the external walls by manager of the Phase, the gondola will be operating in the airspace outside window of residential properties and above flat roof and roof in such tower.

R.C. ENCLOSURE FOR H.R.	= 消防喉轆之鋼筋混凝土圍封 REINFORCED CONCRETE ENCLOSURE FOR HOSE REEL
R.C. ENCLOSURE FOR M&E SERVICES	= 機電設備之鋼筋混凝土圍封 REINFORCED CONCRETE ENCLOSURE FOR MECHANICAL & ELECTRICAL SERVICES
REST RM.	= 洗手間 REST ROOM
RS / MRR	= 垃圾及物料回收室 REFUSE STORAGE AND MATERIAL RECOVERY ROOM
STORE	= 儲物房 STORE
UP	= 上 UP
U.P.	= 工作平台 UTILITY PLATFORM
UTIL.	= 多功能房 UTILITY ROOM
W.M.C.	= 水錶櫃 WATER METER CABINET
W.M.R.	= 水錶房 WATER METER ROOM
(BL)	= 噪音緩解措施 (實心玻璃欄杆) NOISE MITIGATION MEASURE (SOLID GLASS BALUSTRADE)
(F)	= 噪音緩解措施 (隔聲簷) NOISE MITIGATION MEASURE (FIN)
(FG)	= 噪音緩解措施 (固定玻璃) NOISE MITIGATION MEASURE (FIXED GLAZING)
(MW)	= 噪音緩解措施 (維修窗) NOISE MITIGATION MEASURE (MAINTENANCE WINDOW)
(SC)	= 噪音緩解措施 (自動關閉門) NOISE MITIGATION MEASURE (SELF-CLOSING DOOR)
 / 	= 空調機(室外機)位置 LOCATION OF AIR CONDITIONER (OUTDOOR UNIT)
(BT)	= 浴缸 BATH TUB
(S)	= 淋浴間 SHOWER CUBICLE

附註:

- 部份樓層外牆設有建築裝飾及/或外露喉管。
- 部份單位的露台及/或平台及/或天台及/或工作平台及/或空調機平台及/或外牆或其鄰近地方設有外露及/或內藏於飾板的公用喉管。
- 部份單位客廳、飯廳、睡房、套房、浴室、洗手間、衛生間、多功能房、儲物房、開放式廚房及廚房有裝飾橫樑或假天花，用以裝置冷氣系統及/或機電設備。部分單位天花板有跌級樓板，用以安裝樓上單位之機電設備。
- 部份單位之天花高度將會因應結構、建築及/或裝修設計上的需要而有差異。
- 樓面平面圖上所顯示的形象裝置符號，例如門、浴缸、洗面盆、坐廁、洗面盆櫃、洗滌盆等乃根據最新的經批准的建築圖則，只作一般性標誌以顯示其大約位置，而非展示其實際大小、設計、形狀及數量。
- 部份住宅單位外的空調機平台將會放置一部或多部空調機(室外機)。該等空調機可能發出熱力及/或聲音。
- 露台及工作平台為不可封閉的地方。
- 在期數管理人員安排外牆之必要維修進行期間，吊船將在該等大廈的住宅物業之窗戶外及平台及天台上之空間運作。

Phase 3 Tower 1(1A) 1/F Floor Plan
第3期 第1座(1A) 1樓樓面平面圖



	Tower 座數	Floor 樓層	Units 單位	
			A	B
The thickness of the floor slabs (excluding plaster) of each residential property (mm) 每個住宅物業的樓板(不包括灰泥)的厚度(毫米)	Phase 3 Tower 1(1A) 第3期 第1座(1A)	1/F 1樓	150, 300	150, 300
The floor-to-floor height (i.e. the height between the top surface of the structural slab of a floor and the top surface of the structural slab of its immediate upper floor) of each residential property (mm) 每個住宅物業的層與層之間的高度(指該樓層之石屎地台面與上一層石屎地台面之高度距離)(毫米)			2700, 2750, 2800, 3100	2650, 2700, 2750, 2800, 3100

The internal areas of the residential properties on the upper floors will generally be slightly larger than those on the lower floors because of the reducing thickness of the structural walls on the upper floors. (Note: This statement required in Section 10(2)(e) in Part 1 of Schedule 1 of the Residential Properties (First-hand Sales) Ordinance (Cap.621) is not applicable to the Phase).

Notes:

- The dimensions in the floor plans are all structural dimensions in millimetre.
- Please refer to page 21 of this sales brochure for legend of the terms and abbreviations in studying the floor plans.

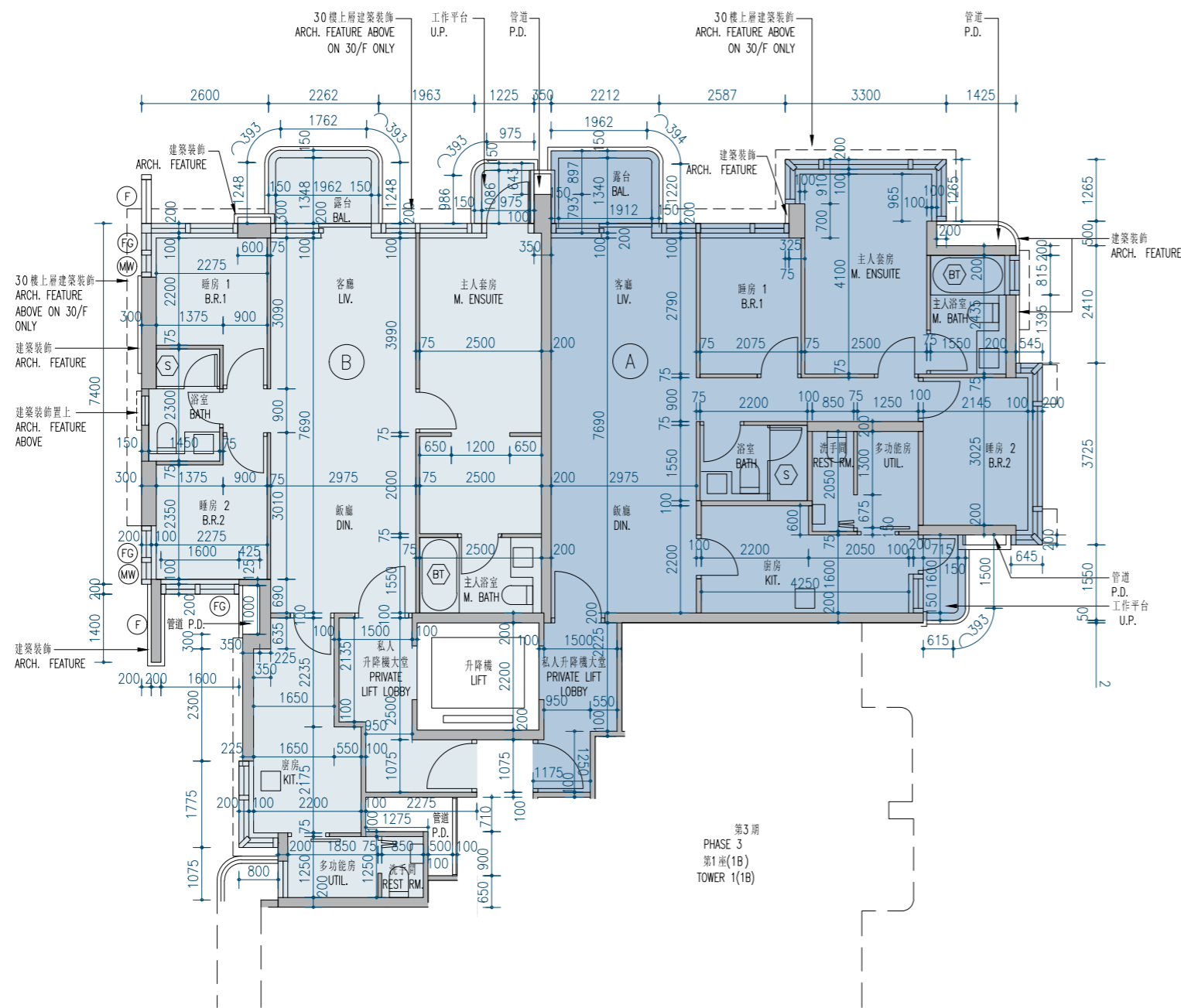
因住宅物業的較高樓層的結構牆的厚度遞減，較高樓層的內部面積，一般比較低樓層的內部面積稍大。(註：此根據《一手住宅物業銷售條例》(第621章)附表1第1部第10(2)(e)條所規定的陳述並不適用於期數)

附註：

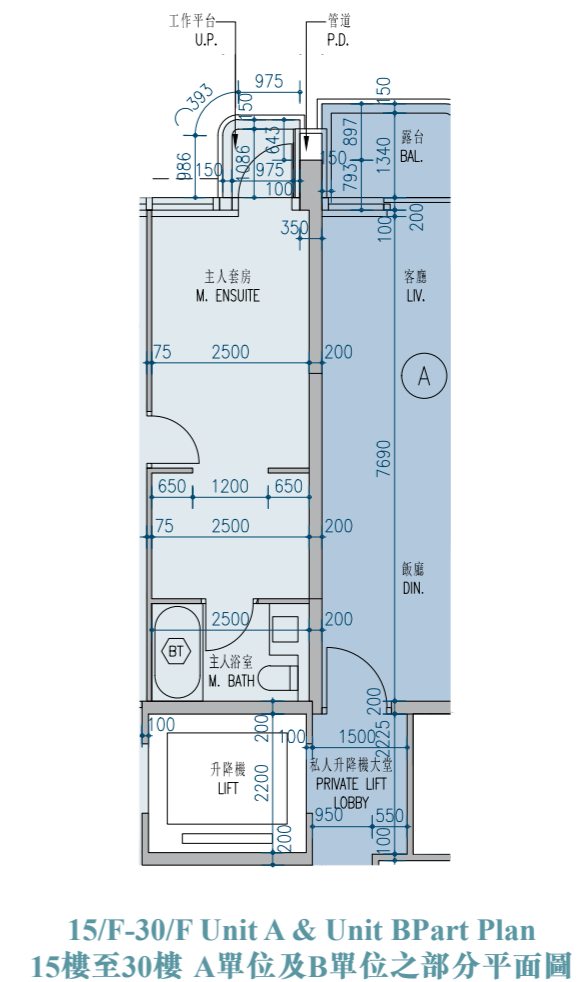
- 樓面平面圖之尺規所列數字為以毫米標示之建築結構尺寸。
- 請參閱本售樓說明書第21頁之圖例以協助閱讀樓面平面圖之名稱和簡稱。

11 FLOOR PLANS OF RESIDENTIAL PROPERTIES IN THE PHASE 期數的住宅物業的樓面平面圖

Phase 3 Tower 1(1A) 2/F-3/F, 5/F-12/F, 15/F-23/F, 25/F-30/F Floor Plan
第3期 第1座(1A) 2樓至3樓、5樓至12樓、15樓至23樓、25樓至30樓樓面平面圖



第3期
PHASE 3
第1座(1B)
TOWER 1(1B)



15/F-30/F Unit A & Unit B Part Plan
15樓至30樓 A單位及B單位之部分平面圖

	Tower 座數	Floor 樓層	Units 單位	
			A	B
The thickness of the floor slabs (excluding plaster) of each residential property (mm) 每個住宅物業的樓板(不包括灰泥)的厚度(毫米)	Phase 3 Tower 1(1A) 第3期 第1座(1A)	2/F - 3/F, 5/F - 12/F, 15/F - 23/F, 25/F-29/F 2樓至3樓、 5樓至12樓、 15樓至23樓、 25樓至29樓	150, 300	150, 300
The floor-to-floor height (i.e. the height between the top surface of the structural slab of a floor and the top surface of the structural slab of its immediate upper floor) of each residential property (mm) 每個住宅物業的層與層之間的高度(指該樓層之石屎地台面與上一層石屎地台面之高度距離)(毫米)		2700, 2750, 2800, 3100	2700, 2750, 2800, 3100	
The thickness of the floor slabs (excluding plaster) of each residential property (mm) 每個住宅物業的樓板(不包括灰泥)的厚度(毫米)		30/F 30樓	150, 200, 250, 300, 500	150, 200, 300, 500
The floor-to-floor height (i.e. the height between the top surface of the structural slab of a floor and the top surface of the structural slab of its immediate upper floor) of each residential property (mm) 每個住宅物業的層與層之間的高度(指該樓層之石屎地台面與上一層石屎地台面之高度距離)(毫米)		3050, 3100, 3150, 3200, 3250, 3500	3050, 3100, 3150, 3200, 3400, 3500	

The internal areas of the residential properties on the upper floors will generally be slightly larger than those on the lower floors because of the reducing thickness of the structural walls on the upper floors. (Note: This statement required in Section 10(2)(e) in Part 1 of Schedule 1 of the Residential Properties (First-hand Sales) Ordinance (Cap.621) is not applicable to the Phase).

Notes:

- The dimensions in the floor plans are all structural dimensions in millimetre.
- Please refer to page 21 of this sales brochure for legend of the terms and abbreviations in studying the floor plans.

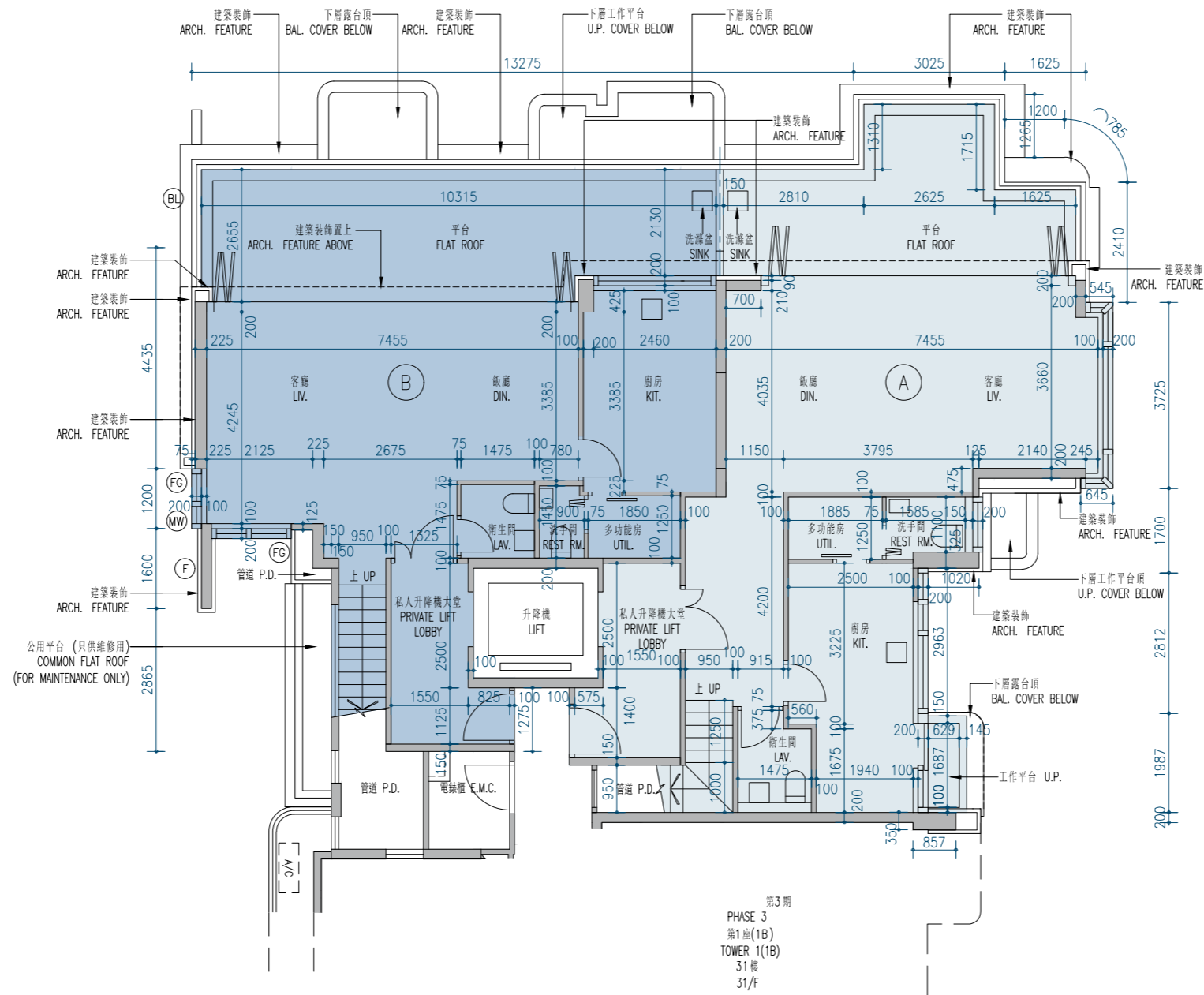
因住宅物業的較高樓層的結構牆的厚度遞減，較高樓層的內部面積，一般比較低樓層的內部面積稍大。(註：此根據《一手住宅物業銷售條例》(第621章)附表1第1部第10(2)(e)條所規定的陳述並不適用於期數)

附註：

- 樓面平面圖之尺規所列數字為以毫米標示之建築結構尺寸。
- 請參閱本售樓說明書第21頁之圖例以協助閱讀樓面平面圖之名稱和簡稱。

Phase 3 Tower 1(1A) 31/F Floor Plan
第3期 第1座(1A) 31樓樓面平面圖

Scale:  5M (米)
比例: 0M/米



	Tower 座數	Floor 樓層	Units 單位	
			A	B
The thickness of the floor slabs (excluding plaster) of each residential property (mm) 每個住宅物業的樓板(不包括灰泥)的厚度(毫米)	Phase 3 Tower 1(1A) 第3期 第1座(1A)	31/F 31樓	150, 200, 300	150, 200
The floor-to-floor height (i.e. the height between the top surface of the structural slab of a floor and the top surface of the structural slab of its immediate upper floor) of each residential property (mm) 每個住宅物業的層與層之間的高度(指該樓層之石屎地台面與上一層石屎地台面之高度距離)(毫米)			3200, 3250, 3500	3200, 3250, 3500

The internal areas of the residential properties on the upper floors will generally be slightly larger than those on the lower floors because of the reducing thickness of the structural walls on the upper floors. (Note: This statement required in Section 10(2)(e) in Part 1 of Schedule 1 of the Residential Properties (First-hand Sales) Ordinance (Cap.621) is not applicable to the Phase).

Notes:

1. The dimensions in the floor plans are all structural dimensions in millimetre.
2. Please refer to page 21 of this sales brochure for legend of the terms and abbreviations in studying the floor plans.

因住宅物業的較高樓層的結構牆的厚度遞減，較高樓層的內部面積，一般比較低樓層的內部面積稍大。(註：此根據《一手住宅物業銷售條例》(第621章)附表1第1部第10(2)(e)條所規定的陳述並不適用於期數)

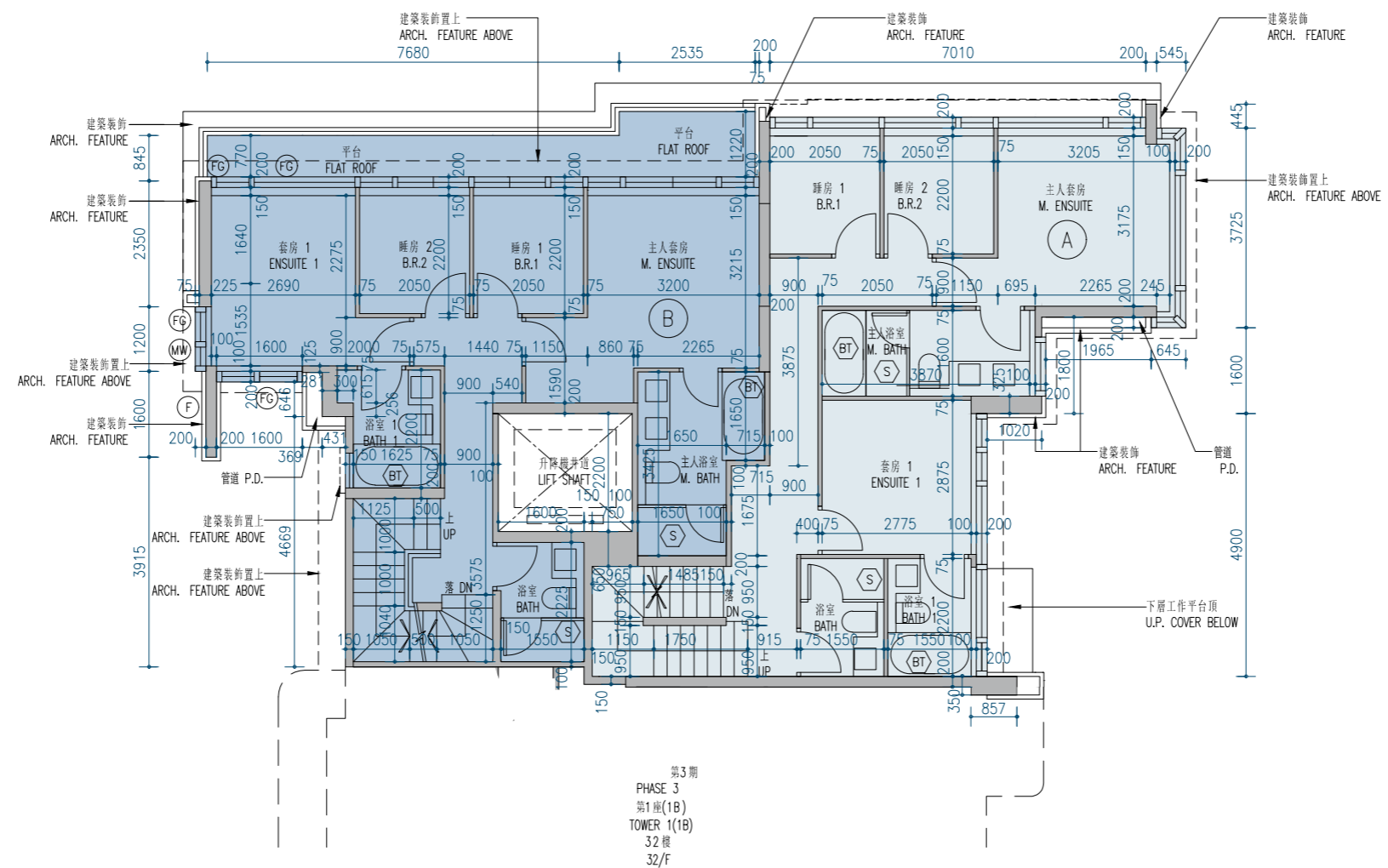
附註：

1. 樓面平面圖之尺規所列數字為以毫米標示之建築結構尺寸。
2. 請參閱本售樓說明書第21頁之圖例以協助閱讀樓面平面圖之名稱和簡稱。

11 FLOOR PLANS OF RESIDENTIAL PROPERTIES IN THE PHASE 期數的住宅物業的樓面平面圖

Phase 3 Tower 1(1A) 32/F Floor Plan
第3期 第1座(1A) 32樓樓面平面圖

Scale: 比例: 0M/米 5M (米) 



	Tower 座數	Floor 樓層	Units 單位	
			A	B
The thickness of the floor slabs (excluding plaster) of each residential property (mm) 每個住宅物業的樓板(不包括灰泥)的厚度(毫米)	Phase 3 Tower 1(1A) 第3期 第1座(1A)	32/F 32樓	200	150, 200
The floor-to-floor height (i.e. the height between the top surface of the structural slab of a floor and the top surface of the structural slab of its immediate upper floor) of each residential property (mm) 每個住宅物業的層與層之間的高度(指該樓層之石屎地台面與上一層石屎地台面之高度距離)(毫米)			3350, 4000	3350

The internal areas of the residential properties on the upper floors will generally be slightly larger than those on the lower floors because of the reducing thickness of the structural walls on the upper floors. (Note: This statement required in Section 10(2)(e) in Part 1 of Schedule 1 of the Residential Properties (First-hand Sales) Ordinance (Cap.621) is not applicable to the Phase).

Notes:

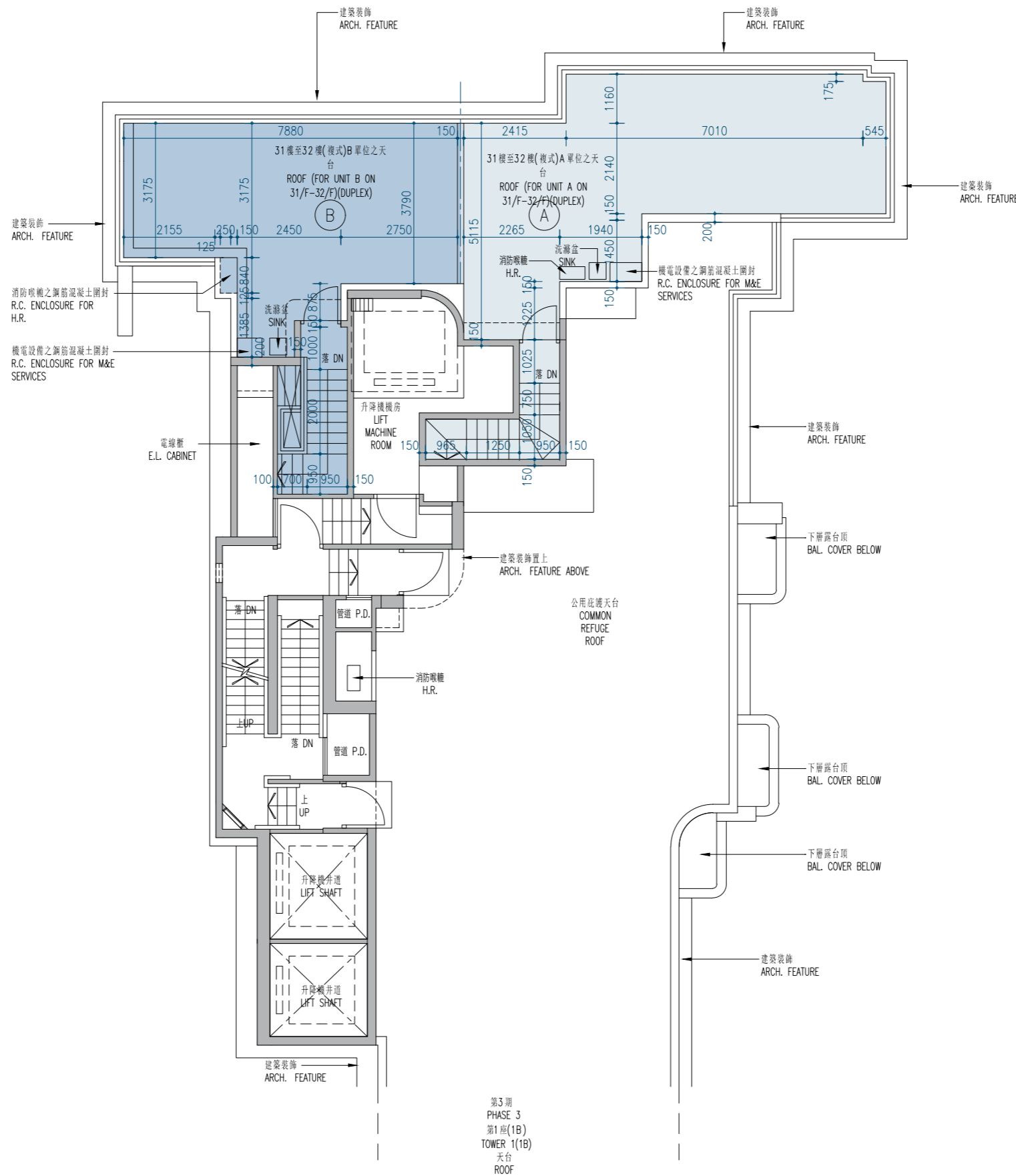
- The dimensions in the floor plans are all structural dimensions in millimetre.
- Please refer to page 21 of this sales brochure for legend of the terms and abbreviations in studying the floor plans.

因住宅物業的較高樓層的結構牆的厚度遞減，較高樓層的內部面積，一般比較低樓層的內部面積稍大。(註：此根據《一手住宅物業銷售條例》(第621章)附表1第1部第10(2)(e)條所規定的陳述並不適用於期數)

附註：

- 樓面平面圖之尺規所列數字為以毫米標示之建築結構尺寸。
- 請參閱本售樓說明書第21頁之圖例以協助閱讀樓面平面圖之名稱和簡稱。

Phase 3 Tower 1(1A) Roof Plan
第3期 第1座(1A) 天台平面圖



第3期
PHASE 3
第1座(1B)
TOWER 1(1B)
天台
ROOF

	Tower 座數	Floor 樓層	Units 單位	
			A	B
The thickness of the floor slabs (excluding plaster) of each residential property (mm) 每個住宅物業的樓板(不包括灰泥)的厚度(毫米)	Phase 3 Tower 1(1A) 第3期 第1座(1A)	Roof 天台	200	200
The floor-to-floor height (i.e. the height between the top surface of the structural slab of a floor and the top surface of the structural slab of its immediate upper floor) of each residential property (mm) 每個住宅物業的層與層之間的高度(指該樓層之石屎地台面與上一層石屎地台面之高度距離)(毫米)			3500	3500

The internal areas of the residential properties on the upper floors will generally be slightly larger than those on the lower floors because of the reducing thickness of the structural walls on the upper floors. (Note: This statement required in Section 10(2)(e) in Part 1 of Schedule 1 of the Residential Properties (First-hand Sales) Ordinance (Cap.621) is not applicable to the Phase).

Notes:

1. The dimensions in the floor plans are all structural dimensions in millimetre.
2. Please refer to page 21 of this sales brochure for legend of the terms and abbreviations in studying the floor plans.

因住宅物業的較高樓層的結構牆的厚度遞減，較高樓層的內部面積，一般比較低樓層的內部面積稍大。(註：此根據《一手住宅物業銷售條例》(第621章)附表1第1部第10(2)(e)條所規定的陳述並不適用於期數)

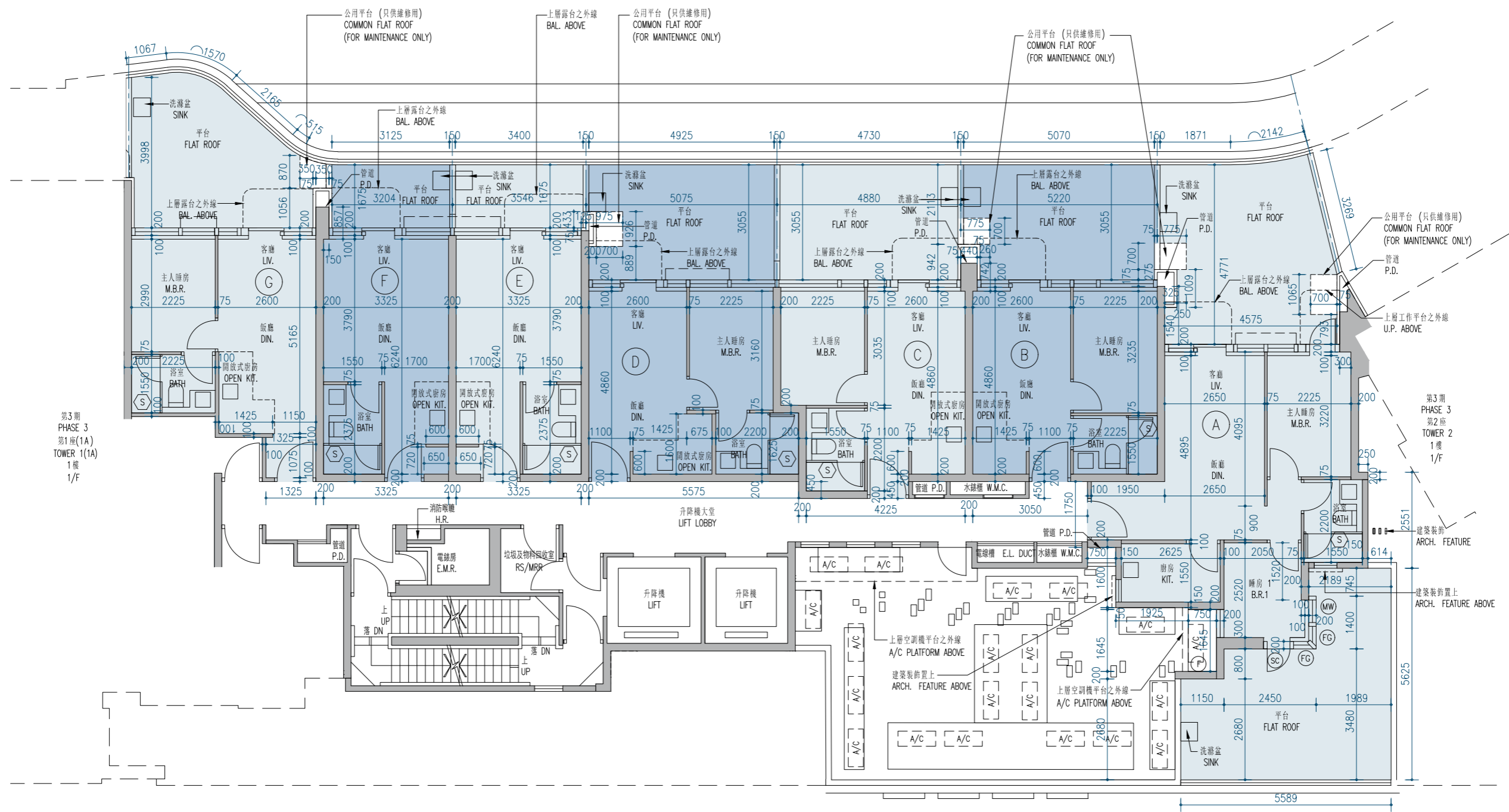
附註：

1. 樓面平面圖之尺規所列數字為以毫米標示之建築結構尺寸。
2. 請參閱本售樓說明書第21頁之圖例以協助閱讀樓面平面圖之名稱和簡稱。

Phase 3 Tower 1(1B) 1/F Floor Plan

第3期 第1座(1B) 1樓樓面平面圖

Scale: 比例: 0M/米 5M (米) S



第3期
PHASE 3
第1座(1A)
TOWER 1(A)
1樓
1/F

第3期
PHASE 3
第2座
TOWER 2
1樓
1/F

	Tower 座數	Floor 樓層	Units 單位						
			A	B	C	D	E	F	G
The thickness of the floor slabs (excluding plaster) of each residential property (mm) 每個住宅物業的樓板(不包括灰泥)的厚度(毫米)	Phase 3 Tower 1(1B) 第3期 第1座(1B)	1/F 1樓	150, 300	150, 300	150, 300	150, 300	150, 300	150, 300	150, 300
The floor-to-floor height (i.e. the height between the top surface of the structural slab of a floor and the top surface of the structural slab of its immediate upper floor) of each residential property (mm) 每個住宅物業的層與層之間的高度(指該樓層之石屎地台面與上一層石屎地台面之高度距離)(毫米)			2800, 3100	2800, 2850, 3100	2800, 3100	2800, 3100	2800, 3100	2800, 3100	2750, 2800, 3100

The internal areas of the residential properties on the upper floors will generally be slightly larger than those on the lower floors because of the reducing thickness of the structural walls on the upper floors. (Note: This statement required in Section 10(2)(e) in Part 1 of Schedule 1 of the Residential Properties (First-hand Sales) Ordinance (Cap.621) is not applicable to the Phase).

Notes:

- The dimensions in the floor plans are all structural dimensions in millimetre.
- Please refer to page 21 of this sales brochure for legend of the terms and abbreviations in studying the floor plans.

因住宅物業的較高樓層的結構牆的厚度遞減，較高樓層的內部面積，一般比較低樓層的內部面積稍大。(註：此根據《一手住宅物業銷售條例》(第621章)附表1第1部第10(2)(e)條所規定的陳述並不適用於期數)

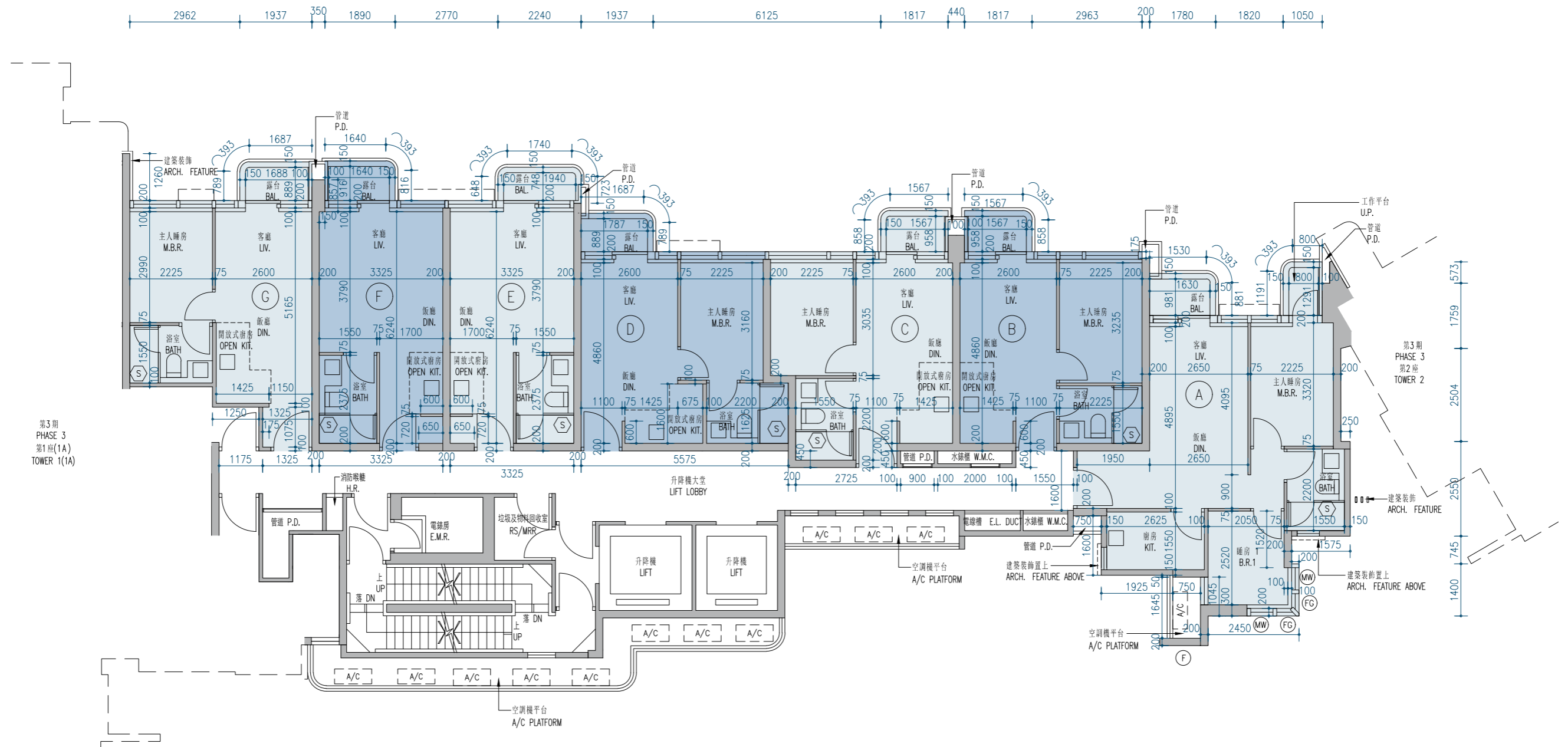
附註：

- 樓面平面圖之尺規所列數字為以毫米標示之建築結構尺寸。
- 請參閱本售樓說明書第21頁之圖例以協助閱讀樓面平面圖之名稱和簡稱。

11 FLOOR PLANS OF RESIDENTIAL PROPERTIES IN THE PHASE 期數的住宅物業的樓面平面圖

Phase 3 Tower 1(1B) 2/F-3/F, 5/F-12/F, 15/F-23/F, 25/F-30/F Floor Plan
第3期 第1座(1B) 2樓至3樓、5樓至12樓、15樓至23樓、25樓至30樓樓面平面圖

Scale: 0M/米 5M (米) S



	Tower 座數	Floor 樓層	Units 單位						
			A	B	C	D	E	F	G
The thickness of the floor slabs (excluding plaster) of each residential property (mm) 每個住宅物業的樓板(不包括灰泥)的厚度(毫米)	Phase 3 Tower 1(1B) 第3期 第1座(1B)	2/F - 3/F, 5/F - 12/F, 15/F - 23/F, 25/F-29/F 2樓至3樓、 5樓至12樓、 15樓至23樓、 25樓至29樓	150, 300	150, 300	150, 300	150, 300	150, 300	150, 300	150, 300
The floor-to-floor height (i.e. the height between the top surface of the structural slab of a floor and the top surface of the structural slab of its immediate upper floor) of each residential property (mm) 每個住宅物業的層與層之間的高度(指該樓層之石屎地台面與上一層石屎地台面之高度距離)(毫米)		2800, 3100	2800, 2850, 3100	2800, 3100	2800, 3100	2800, 3100	2800, 3100	2750, 2800, 3100	
The thickness of the floor slabs (excluding plaster) of each residential property (mm) 每個住宅物業的樓板(不包括灰泥)的厚度(毫米)		30/F 30樓	150, 300	150, 300	150, 300	150, 300	150, 300	150, 300	150, 200, 250, 300, 500
The floor-to-floor height (i.e. the height between the top surface of the structural slab of a floor and the top surface of the structural slab of its immediate upper floor) of each residential property (mm) 每個住宅物業的層與層之間的高度(指該樓層之石屎地台面與上一層石屎地台面之高度距離)(毫米)		3100, 3400	3100, 3150, 3400	3100, 3400	3100, 3400	3100, 3400	3100, 3400	3100, 3400	3100, 3150, 3200, 3250, 3500

The internal areas of the residential properties on the upper floors will generally be slightly larger than those on the lower floors because of the reducing thickness of the structural walls on the upper floors. (Note: This statement required in Section 10(2)(e) in Part 1 of Schedule 1 of the Residential Properties (First-hand Sales) Ordinance (Cap.621) is not applicable to the Phase).

Notes:


- The dimensions in the floor plans are all structural dimensions in millimetre.
- Please refer to page 21 of this sales brochure for legend of the terms and abbreviations in studying the floor plans.

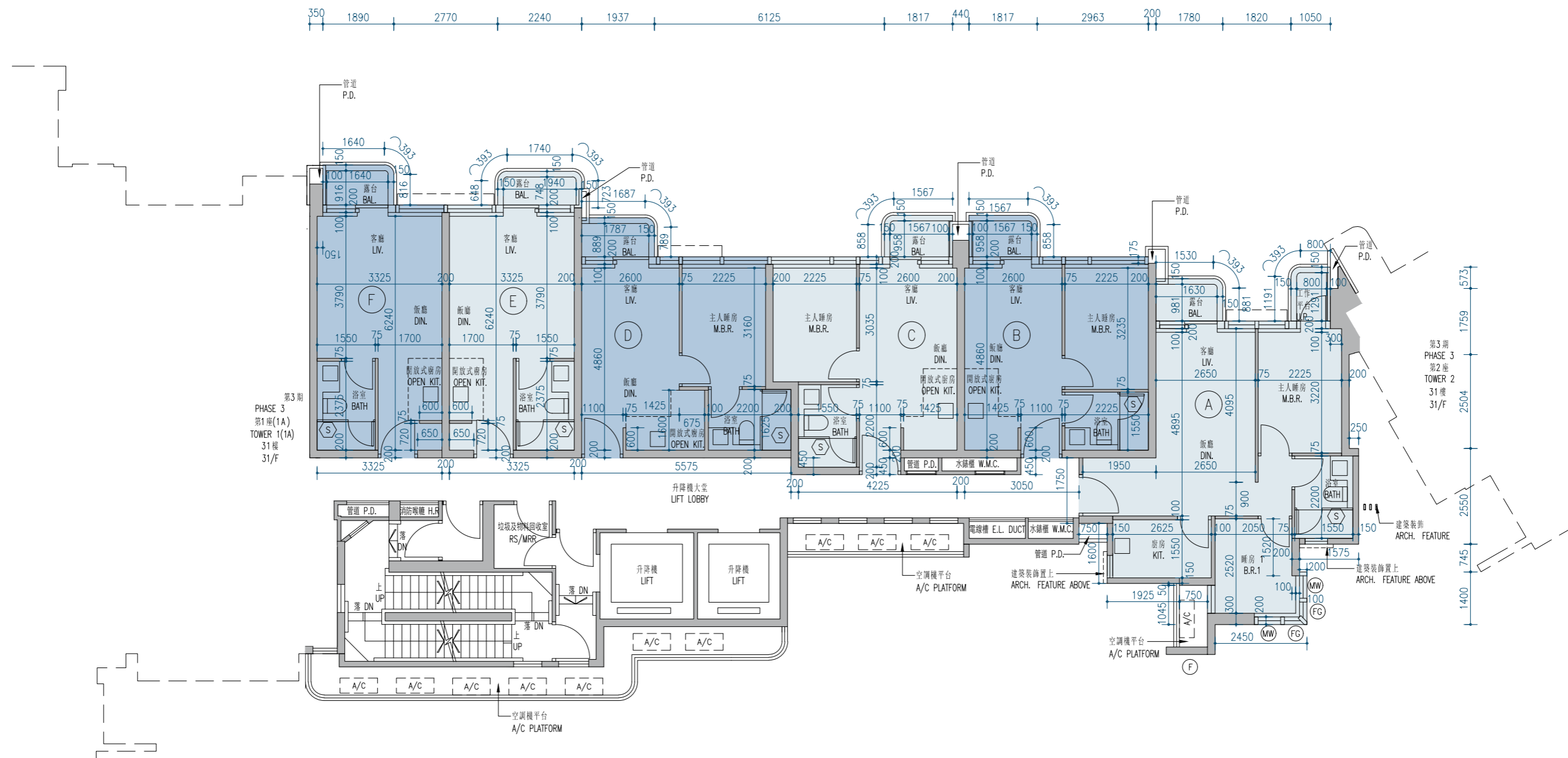
因住宅物業的較高樓層的結構牆的厚度遞減，較高樓層的內部面積，一般比較低樓層的內部面積稍大。(註：此根據《一手住宅物業銷售條例》(第621章)附表1第1部第10(2)(e)條所規定的陳述並不適用於期數)

附註：

- 樓面平面圖之尺規所列數字為以毫米標示之建築結構尺寸。
- 請參閱本售樓說明書第21頁之圖例以協助閱讀樓面平面圖之名稱和簡稱。

Phase 3 Tower 1(1B) 31/F Floor Plan
第3期 第1座(1B) 31樓樓面平面圖

Scale:  5M (米) S



	Tower 座數	Floor 樓層	Units 單位					
			A	B	C	D	E	F
The thickness of the floor slabs (excluding plaster) of each residential property (mm) 每個住宅物業的樓板(不包括灰泥)的厚度(毫米)	Phase 3 Tower 1(1B) 第3期 第1座(1B)	31/F 31樓	150, 300	150, 300	150, 300	150, 300	150, 300	150, 300
The floor-to-floor height (i.e. the height between the top surface of the structural slab of a floor and the top surface of the structural slab of its immediate upper floor) of each residential property (mm) 每個住宅物業的層與層之間的高度(指該樓層之石屎地台面與上一層石屎地台面之高度距離)(毫米)			3150, 3450	3150, 3200, 3450	3150, 3450	3150, 3450	3150, 3450	3150, 3450

The internal areas of the residential properties on the upper floors will generally be slightly larger than those on the lower floors because of the reducing thickness of the structural walls on the upper floors. (Note: This statement required in Section 10(2)(e) in Part 1 of Schedule 1 of the Residential Properties (First-hand Sales) Ordinance (Cap.621) is not applicable to the Phase).

Notes:

- The dimensions in the floor plans are all structural dimensions in millimetre.
- Please refer to page 21 of this sales brochure for legend of the terms and abbreviations in studying the floor plans.

因住宅物業的較高樓層的結構牆的厚度遞減，較高樓層的內部面積，一般比較低樓層的內部面積稍大。(註：此根據《一手住宅物業銷售條例》(第621章)附表1第1部第10(2)(e)條所規定的陳述並不適用於期數)

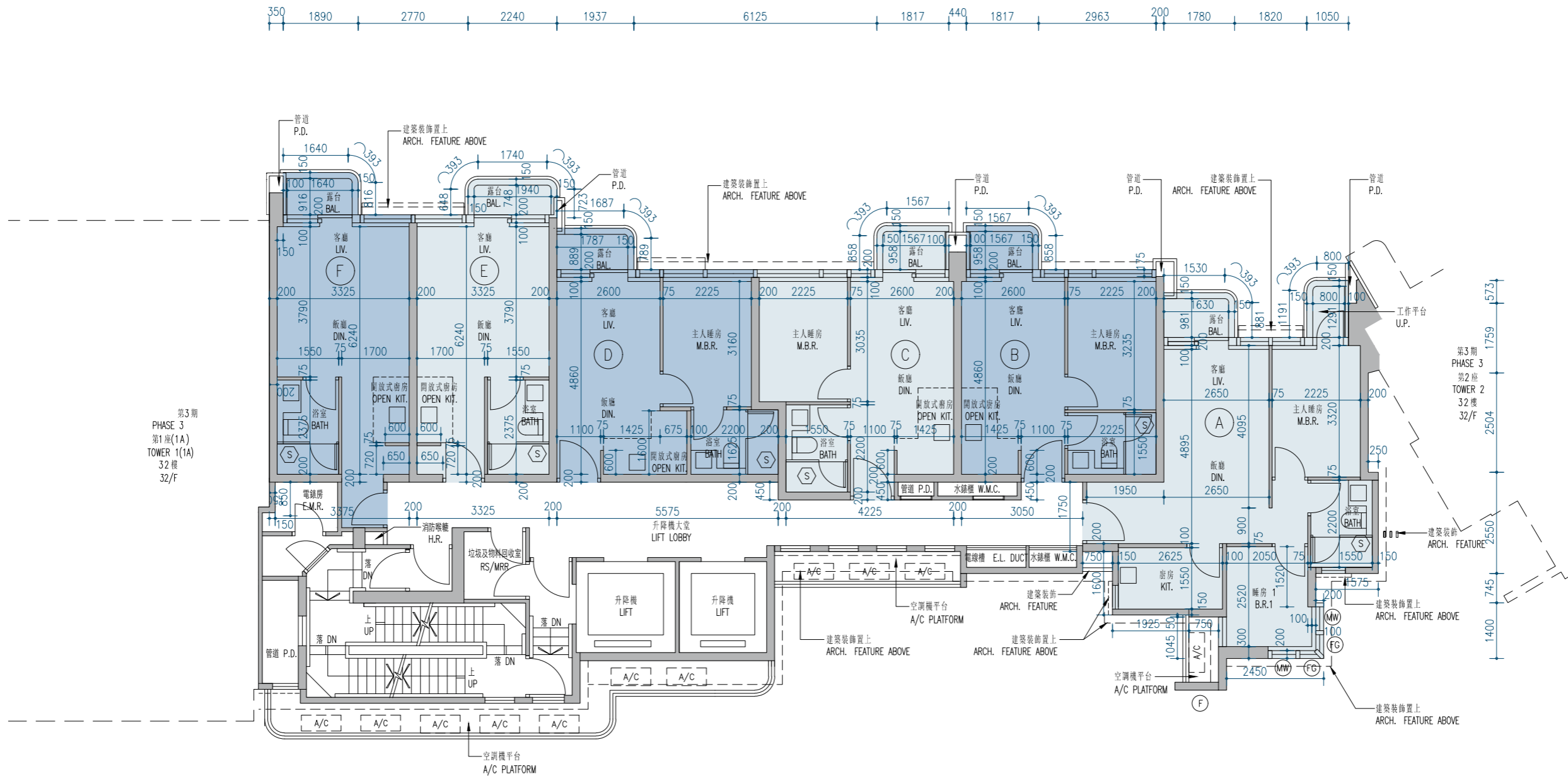
附註：

- 樓面平面圖之尺規所列數字為以毫米標示之建築結構尺寸。
- 請參閱本售樓說明書第21頁之圖例以協助閱讀樓面平面圖之名稱和簡稱。

11 FLOOR PLANS OF RESIDENTIAL PROPERTIES IN THE PHASE 期數的住宅物業的樓面平面圖

Phase 3 Tower 1(1B) 32/F Floor Plan
第3期 第1座(1B) 32樓樓面平面圖

Scale: 比例: 0M/米 5M (米) S



	Tower 座數	Floor 樓層	Units 單位					
			A	B	C	D	E	F
The thickness of the floor slabs (excluding plaster) of each residential property (mm) 每個住宅物業的樓板(不包括灰泥)的厚度(毫米)	Phase 3 Tower 1(1B) 第3期 第1座(1B)	32/F 32樓	150, 200, 300	150, 200, 300	150, 200, 300	150, 200, 300	150, 200, 300	150, 200, 300
The floor-to-floor height (i.e. the height between the top surface of the structural slab of a floor and the top surface of the structural slab of its immediate upper floor) of each residential property (mm) 每個住宅物業的層與層之間的高度(指該樓層之石屎地台面與上一層石屎地台面之高度距離)(毫米)			3500	3500	3500	3500	3500	3500

The internal areas of the residential properties on the upper floors will generally be slightly larger than those on the lower floors because of the reducing thickness of the structural walls on the upper floors. (Note: This statement required in Section 10(2)(e) in Part 1 of Schedule 1 of the Residential Properties (First-hand Sales) Ordinance (Cap.621) is not applicable to the Phase).

Notes:

- The dimensions in the floor plans are all structural dimensions in millimetre.
- Please refer to page 21 of this sales brochure for legend of the terms and abbreviations in studying the floor plans.

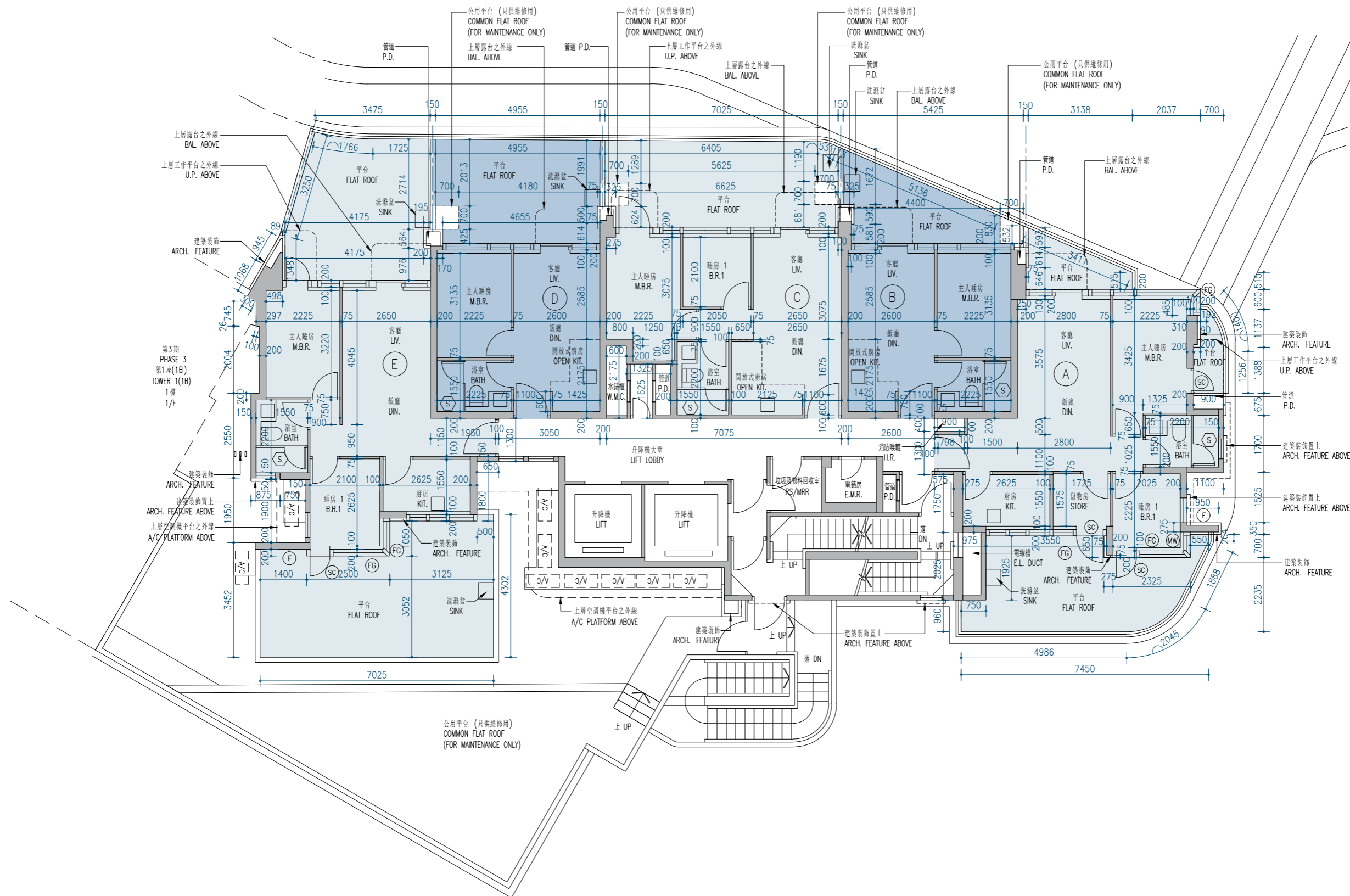
因住宅物業的較高樓層的結構牆的厚度遞減，較高樓層的內部面積，一般比較低樓層的內部面積稍大。(註：此根據《一手住宅物業銷售條例》(第621章)附表1第1部第10(2)(e)條所規定的陳述並不適用於期數)

附註：

- 樓面平面圖之尺規所列數字為以毫米標示之建築結構尺寸。
- 請參閱本售樓說明書第21頁之圖例以協助閱讀樓面平面圖之名稱和簡稱。

Phase 3 Tower 2 1/F Floor Plan
第3期 第2座 1樓樓面平面圖

Scale: 比例: 0M/米 5M(米) S



	Tower 座數	Floor 樓層	Units 單位				
			A	B	C	D	E
The thickness of the floor slabs (excluding plaster) of each residential property (mm) 每個住宅物業的樓板(不包括灰泥)的厚度(毫米)	Phase 3 Tower 2 第3期 第2座	1/F 1樓	150, 300	150, 300	150, 300	150, 300	150, 300
The floor-to-floor height (i.e. the height between the top surface of the structural slab of a floor and the top surface of the structural slab of its immediate upper floor) of each residential property (mm) 每個住宅物業的層與層之間的高度(指該樓層之石屎地台面與上一層石屎地台面之高度距離)(毫米)			2800, 3100	2800, 3100	2800, 3100	2800, 3100	2800, 3100

The internal areas of the residential properties on the upper floors will generally be slightly larger than those on the lower floors because of the reducing thickness of the structural walls on the upper floors. (Note: This statement required in Section 10(2)(e) in Part 1 of Schedule 1 of the Residential Properties (First-hand Sales) Ordinance (Cap.621) is not applicable to the Phase).

Notes:

- The dimensions in the floor plans are all structural dimensions in millimetre.
- Please refer to page 21 of this sales brochure for legend of the terms and abbreviations in studying the floor plans.

因住宅物業的較高樓層的結構牆的厚度遞減，較高樓層的內部面積，一般比較低樓層的內部面積稍大。(註：此根據《一手住宅物業銷售條例》(第621章)附表1第1部第10(2)(e)條所規定的陳述並不適用於期數)

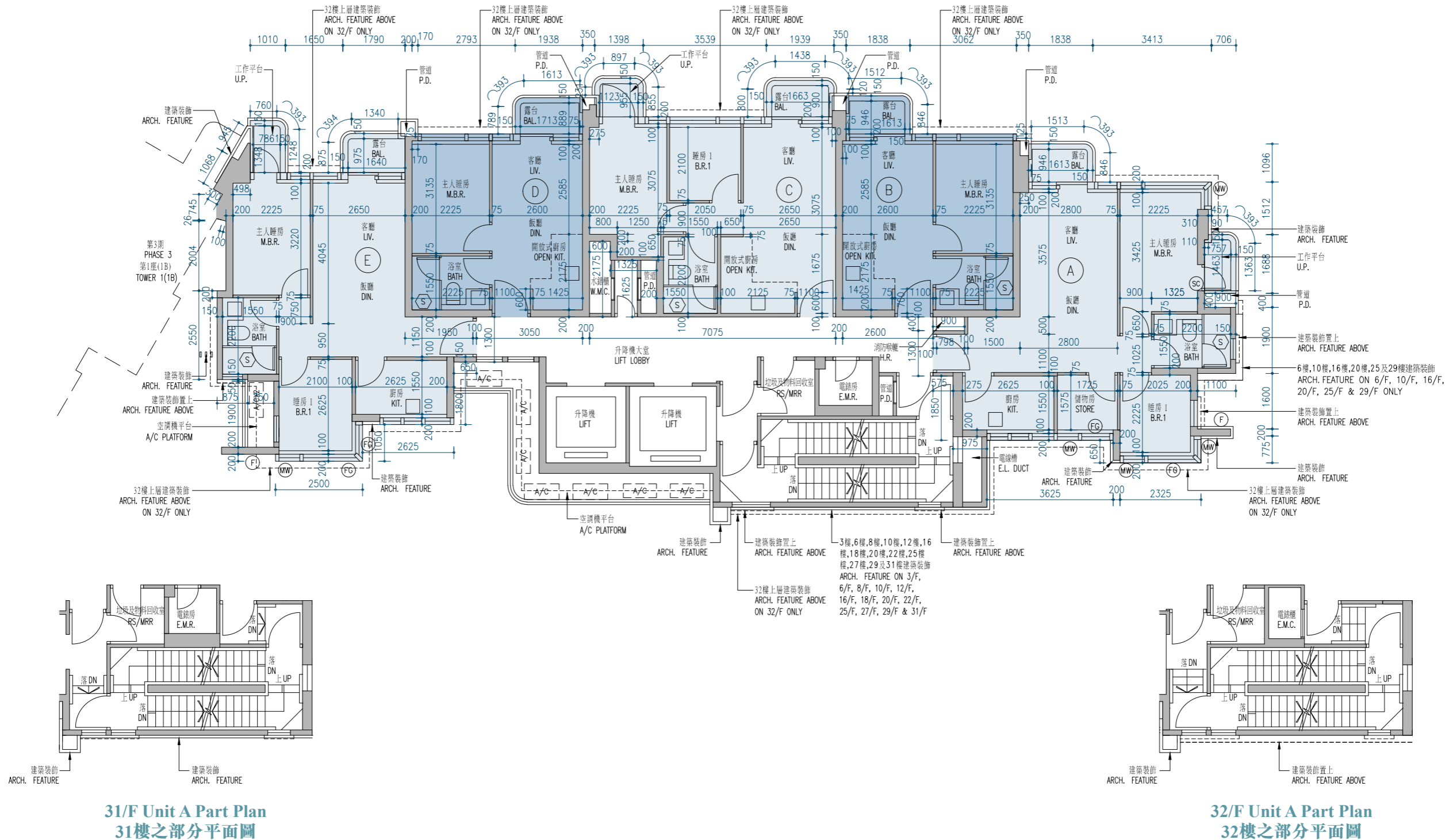
附註：

- 樓面平面圖之尺規所列數字為以毫米標示之建築結構尺寸。
- 請參閱本售樓說明書第21頁之圖例以協助閱讀樓面平面圖之名稱和簡稱。

Phase 3 Tower 2 2/F-3/F, 5/F-12/F, 15/F-23/F, 25/F-32/F Floor Plan

第3期 第2座 2樓至3樓、5樓至12樓、15樓至23樓、25樓至32樓樓面平面圖

Scale: 0M/米 5M(米) S



	Tower 座數	Floor 樓層	Units 單位				
			A	B	C	D	E
The thickness of the floor slabs (excluding plaster) of each residential property (mm) 每個住宅物業的樓板(不包括灰泥)的厚度(毫米)	Phase 3 Tower 2 第3期 第2座	2/F - 3/F, 5/F - 12/F, 15/F - 23/F, 25/F - 29/F 2樓至3樓、 5樓至12樓、 15樓至23樓、 25樓至29樓	150, 300	150, 300	150, 300	150, 300	150, 300
The floor-to-floor height (i.e. the height between the top surface of the structural slab of a floor and the top surface of the structural slab of its immediate upper floor) of each residential property (mm) 每個住宅物業的層與層之間的高度(指該樓層之石屎地台面與上一層石屎地台面之高度距離)(毫米)			2800, 3100	2800, 3100	2800, 3100	2800, 3100	2800, 3100
The thickness of the floor slabs (excluding plaster) of each residential property (mm) 每個住宅物業的樓板(不包括灰泥)的厚度(毫米)		30/F 30樓	150, 300	150, 300	150, 300	150, 300	150, 300
The floor-to-floor height (i.e. the height between the top surface of the structural slab of a floor and the top surface of the structural slab of its immediate upper floor) of each residential property (mm) 每個住宅物業的層與層之間的高度(指該樓層之石屎地台面與上一層石屎地台面之高度距離)(毫米)			3100, 3400	3100, 3400	3100, 3400	3100, 3400	3100, 3400
The thickness of the floor slabs (excluding plaster) of each residential property (mm) 每個住宅物業的樓板(不包括灰泥)的厚度(毫米)		31/F 31樓	150, 300	150, 300	150, 300	150, 300	150, 300
The floor-to-floor height (i.e. the height between the top surface of the structural slab of a floor and the top surface of the structural slab of its immediate upper floor) of each residential property (mm) 每個住宅物業的層與層之間的高度(指該樓層之石屎地台面與上一層石屎地台面之高度距離)(毫米)			3150, 3450	3150, 3450	3150, 3450	3150, 3450	3150, 3450
The thickness of the floor slabs (excluding plaster) of each residential property (mm) 每個住宅物業的樓板(不包括灰泥)的厚度(毫米)		32/F 32樓	150, 200, 300	150, 200, 300	150, 200, 300	150, 200, 300	150, 200, 300
The floor-to-floor height (i.e. the height between the top surface of the structural slab of a floor and the top surface of the structural slab of its immediate upper floor) of each residential property (mm) 每個住宅物業的層與層之間的高度(指該樓層之石屎地台面與上一層石屎地台面之高度距離)(毫米)			3500	3500	3500	3500	3500

The internal areas of the residential properties on the upper floors will generally be slightly larger than those on the lower floors because of the reducing thickness of the structural walls on the upper floors. (Note: This statement required in Section 10(2)(e) in Part 1 of Schedule 1 of the Residential Properties (First-hand Sales) Ordinance (Cap.621) is not applicable to the Phase).

Notes:

- The dimensions in the floor plans are all structural dimensions in millimetre.
- Please refer to page 21 of this sales brochure for legend of the terms and abbreviations in studying the floor plans.

因住宅物業的較高樓層的結構牆的厚度遞減，較高樓層的內部面積，一般比較低樓層的內部面積稍大。(註：此根據《一手住宅物業銷售條例》(第621章)附表1第1部第10(2)(e)條所規定的陳述並不適用於期數)

附註：

- 樓面平面圖之尺規所列數字為以毫米標示之建築結構尺寸。
- 請參閱本售樓說明書第21頁之圖例以協助閱讀樓面平面圖之名稱和簡稱。